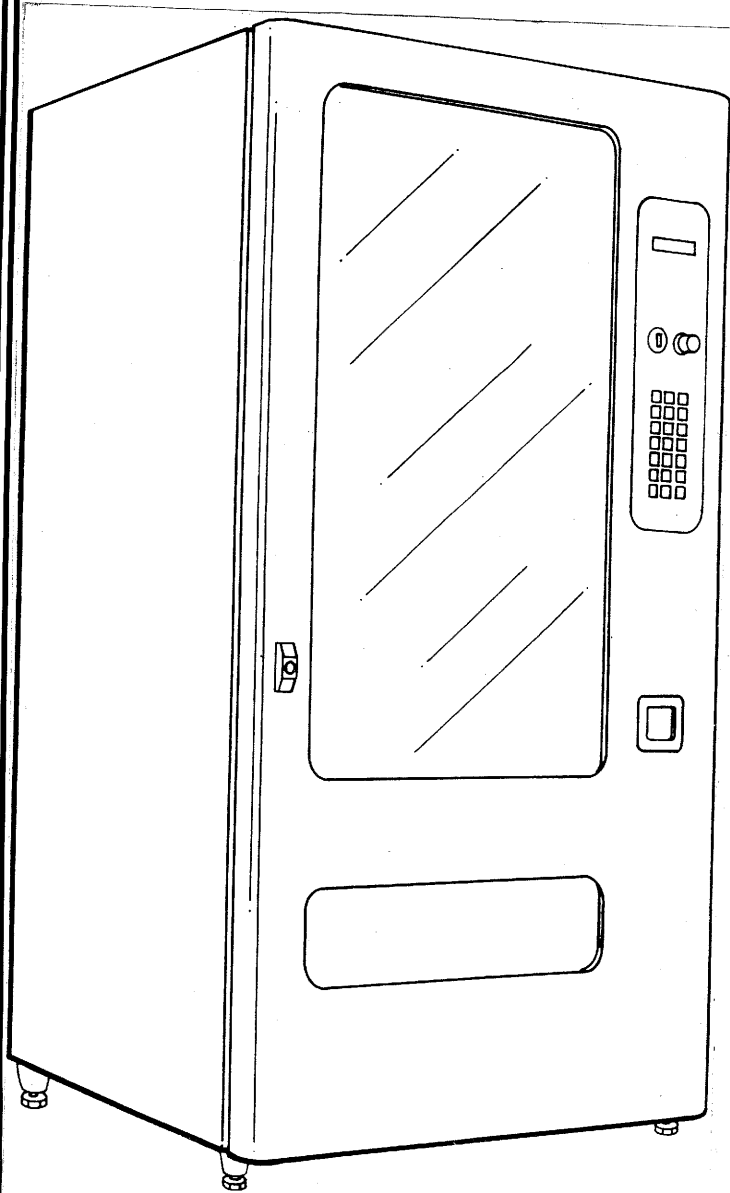


**EURO ROUND FRONT
GLASS FRONT
MERCHANDISER**



**SERVICE
and
PARTS
MANUAL**

August 1996

P/N 4206368
REV. B

TABLE OF CONTENTS

<u>SPECIFICATIONS:</u>	2
<u>INTRODUCTION</u>	3
<u>UNPACKING:</u>	4
<u>GROUNDING & ELECTRICAL:</u>	4
<u>LOADING PRODUCTS:</u>	5
<u>CHANGING TRAY SPACING & CONFIGURATION:</u>	6
<u>CONFIGURATION INSTRUCTIONS (CANDY TO SNACK):</u>	6
<u>CONFIGURATION INSTRUCTIONS (SNACK TO CANDY):</u>	6
<u>CONTROLLER FUNCTIONS:</u>	7
<u>SERVICE MODE (LOW LEVEL):</u>	8
<u>DIAGNOSTICS (ERRORS): (LOW LEVEL):</u>	8
<u>COIN DISPENSE MODE: (LOW LEVEL):</u>	9
<u>TUBE FILL MODE:</u>	9
<u>MOTOR COUNT MODE: (LOW LEVEL):</u>	9
<u>ALTERNATE "POS" MESSAGE:</u>	10
<u>NON-RESETTABLE MIS:</u>	10
<u>SET PRICE (LOW LEVEL):</u>	10
<u>VERIFYING VEND PRICES:</u>	11
<u>TIME PROGRAMMING: (LOW LEVEL)</u>	11
<u>TEST VEND MODES: (LOW LEVEL)</u>	12
<u>TEST VEND SINGLE SELECTION (LOW LEVEL):</u> 12	
<u>TEST VEND COMPLETE ROW: (LOW LEVEL)</u>	12

TEST VEND COMPLETE MACHINE: (LOW LEVEL)13

<u>SERVICE MODE:(HIGH LEVEL)</u>	13
<u>"0" - ALL OPTIONS OFF (HIGH LEVEL)</u>	14
<u>"1" - NO CHEAT MODE: (HIGH LEVEL)</u>	14
<u>"2" - FORCED VEND (HIGH LEVEL)</u>	14
<u>"3" - DISCOUNT MODE (HIGH LEVEL)</u>	14
<u>"4" - LANGUAGE (HIGH LEVEL)</u>	15
<u>"5" - LOTTERY ODDS (HIGH LEVEL)</u>	15
<u>"7" - RESETTABLE MIS:</u>	15
<u>"8" - MIS TOTALS:</u>	15
<u>"9" - STOP CLOCK: (HIGH LEVEL)</u>	15
<u>"A" - MULTI-VEND: (HIGH LEVEL)</u>	15
<u>"B" - EDIT POINT OF SALE MESSAGE: (HIGH LEVEL)</u>	16
<u>"C" - AUTO REINSTATEMENT (HIGH LEVEL):</u>	16
<u>"D" - PROMO VEND (HIGH LEVEL):</u>	17
<u>"E" - RESETTABLE MIS (HIGH LEVEL):</u>	17
<u>"G" - REFRIGERATION CONTROL (HIGH LEVEL):</u> 17	
<u>REFRIGERATION CONTROL - ON/OFF:</u>	17
<u>DEFROST COMMAND:</u>	18
<u>TEMPERATURE DISPLAY MODE:</u>	18
<u>CUT IN TEMPERATURE:</u>	18
<u>CUTOUT TEMPERATURE:</u>	18
<u>SET DEFROST TIME:</u>	18
<u>DEFROST START TIMES:</u>	18
<u>ELECTRICAL TROUBLESHOOTING:</u>	20
<u>PARTS ORDERING PROCEDURE:</u>	25

SPECIFICATIONS:

MODEL NUMBER	AMBIENT			AIR CONDITIONED		
	3069	3070	3071	3073	3074	3075
HEIGHT (INCHES)	68	68	68	68	68	68
HEIGHT (CM)	172.7	172.7	172.7	172.7	172.7	172.7
WIDTH (INCHES)	29 5/16	35 3/16	41	29 5/16	35 3/16	41
WIDTH (CM)	74.30	89.20	104/10	74.30	89.20	104.10
DEPTH (INCHES)	35 1/2	35 1/2	35 1/2	35 1/2	35 1/2	35 1/2
DEPTH (CM)	86.7	86.7	86.7	86.7	86.7	86.7
WEIGHT (POUNDS)	501	572	702	577	648	778
WEIGHT (KG)	227.27	254.54	286.36	261.36	295.45	329.54
VOLTAGE	220/240	220/240	220/240	220/240	220/240	220/240
CYCLE	50	50	50	50	50	50
AMPS	1.75	1.75	1.75	3.75	3.75	3.75

MODEL NUMBER	AIR CONDITIONED			AMBIENT		
	3063	3064	3065	3066	3067	3068
HEIGHT (INCHES)	68	68	68	68	68	68
WIDTH (INCHES)	29 5/16	35 3/16	41	29 5/16	35 3/16	41
DEPTH (INCHES)	35 1/2	35 1/2	35 1/2	35 1/2	35 1/2	35 1/2
WEIGHT (POUNDS)	577	648	778	501	572	702
VOLTAGE	115	115	115	115	115	115
CYCLE	60	60	60	60	60	60
AMPS	7.5	7.5	7.5	3.5	3.5	3.5

REFRIGERATION SYSTEM:

TYPE: 1/4 HP Hermetically Sealed
 CONTROLS: Electronic
 REFRIGERANT: R-134a
 CHARGE: 5.0 Ounces

SELECTIONS: (Factory Configuration)

3 Wide: 24 Select - Expandable to 36
 4 Wide: 36 Select - Expandable to 48
 5 Wide: 40 Select - Expandable to 60

COINAGE:

INTERNATIONAL	DOMESTIC
Mars Executive Mech	Mars TRC-6010
Coinco L-Plus	Coinco 9302L

INTRODUCTION

The contents of this manual contain instructions, service and installation guidelines pertaining to the "**Glass Front Merchandiser Series**" Product Line. Within this Product Line the manufacturer offers various models and configurations to satisfy the needs of specific locations. The variations and configurations of each model will be defined throughout this manual.

This Service Manual will cover the following Models:

- Model 3063 3 Wide Refrigerated 110 V**
- Model 3064 4 Wide Refrigerated 110 V**
- Model 3065 5 Wide Refrigerated 110 V**
- Model 3066 3 Wide Ambient 110 V**
- Model 3067 4 Wide Ambient 110 V**
- Model 3068 5 Wide Ambient 110 V**
- Model 3069 3 Wide Ambient 220 V**
- Model 3070 4 Wide Ambient 220 V**
- Model 3071 5 Wide Ambient 220 V**
- Model 3073 3 Wide Refrigerated 220 V**
- Model 3074 4 Wide Refrigerated 220 V**
- Model 3075 5 Wide Refrigerated 220 V**

All "Glass Front" models are equipped with an electronic control system, which includes a wide variety of features that can be programmed into the logic of the controller and used by the owner/operator as needs arise for specific locations. Some of the features are "Programmable Message Center", Cash and Vend Accountability, Multi-pricing, Service Diagnostic, along with other features which allow the customer to maintain important records. Details of each feature, along with the settings or program options will be explained within this manual.

The electronics within the controller allow all selections to be priced separately at various vend prices ranging from \$.05 to \$99.95 in five cent increments, in U.S. currency. When adapted to accept International or foreign currency, the maximum vend price will be **255** times the smallest denomination of coin being accepted. All programming of the vend functions, pricing and features is done at the controller and changes can be made without the need of any additional accessories or remote parts.

Cash accountability provisions allow the owner/operator to retrieve information such as "Total Cash" transactions and "Total Vend" cycles that have been performed by the vendor. Information for individual selections, complete rows or total machine can be compiled and used for inventory and ordering records.

Electrical malfunctions are recorded by the controller and will be displayed to service personnel when the machine is placed

in the "Service Mode". This notifies the service person of non-functional motors or selections.

The vending sequence of all "Glass Front" vendors is a "first-in"/"first-out" procedure for each selection, eliminating the need for stock rotation to maintain fresh products in the vend area. Each selection has an individual motor and functional selections will continue to operate if other motors become nonfunctional.

Each "Glass Front" vendor has the capability of supporting a "Satellite" vending machine, such as a Can Vendor or Food Merchandiser (Menu Mart II). The satellite vendors utilizes the **Glass Front Vendor's** existing controller, coin changer, bill validator and keypad to perform the vend functions they require. For details on the "satellite" vendor refer to the "Service Manual" pertaining to the specific vendor for installation instructions.

On refrigerated or air conditioned glass front models the temperature is controlled electronically.

Each machine will be identified by a model number and a specific serial number. These identification numbers will appear on the serial number plate attached to the inside and rear of the vendor. Record these numbers for your records. All inquires and correspondence pertaining to this vendor should reference the model and serial numbers.

It is recommended that this manual be read thoroughly to familiarize the service person with the functions of all components, along with the features that are available. The initial set-up of a vending machine is a very important step of insuring that the equipment operates in a trouble-free manner. By following the instructions at the initial installation of the machine, service problems can be avoided and set-up time will be minimized.

Should you have any questions pertaining to information in the manual, replacement parts or the operation of the vendor you should contact your local distributor or:

FOR INTERNATIONAL UNITS:

Serv-O-Matic, Inc.
8040 University Blvd.
P. O. Box 663
Des Moines, Iowa 50305 USA

FOR DOMESTIC OR U.S. UNITS:

Selectivend, Inc.
165 North 10th Street
Waukee, Iowa 50263

Phone: 515-274-3641
Parts Fax: 515-987-4447
Sales Fax: 515-274-0390

UNPACKING:

This machine has been thoroughly inspected before leaving the factory and the delivering carrier has accepted this vendor as their responsibility. Any damage or irregularities should be noted at the time of delivery and reported to the carrier. Request a written inspection report from the claims inspector to file any claim for damage. File the claim with the CARRIER (**NOT THE MANUFACTURER**) within 15 days after receipt of the machine.

Carefully remove the outside packing material in a manner not to damage the finish or exterior of the machine. Inspect the machine for concealed shipping damage. Report any damage hidden by the shipping material directly to the delivering carrier on a hidden damage report.

Record the model number and serial number of the vendor for your records. These numbers can be found on the Serial Plate located on the rear of the cabinet and/or inside the vendor. Refer to these numbers on all correspondence and inquiries pertaining to this vendor.

Remove the "Knock-A-Way" Support by placing a 2 X 6 under the vendor, inserting a screwdriver or prying tool into the groove of the "Knock-A-Way" and splitting it in two. Turn the leveling screws in as far as possible. (**See Illustration #1**)

Position the vendor in its place of operation no further than 9 feet from the power outlet or receptacle and check that the door will open fully without interference. Leave at least six (6) inches of space between the back of the machine and any wall or obstruction for proper air circulation. Level the vendor, making sure all levelers are touching the floor. The vendor **must** be level for proper operation and acceptance of coins through the coin mechanism.

The keys to the vendor will be located in the coin return cup. Open outer door and remove all internal packing material.

Consult local, state and federal codes and regulations before installation of the vendor.

To minimize installation time and to avoid service problems due to improper installation, follow the instructions outlined in this manual.

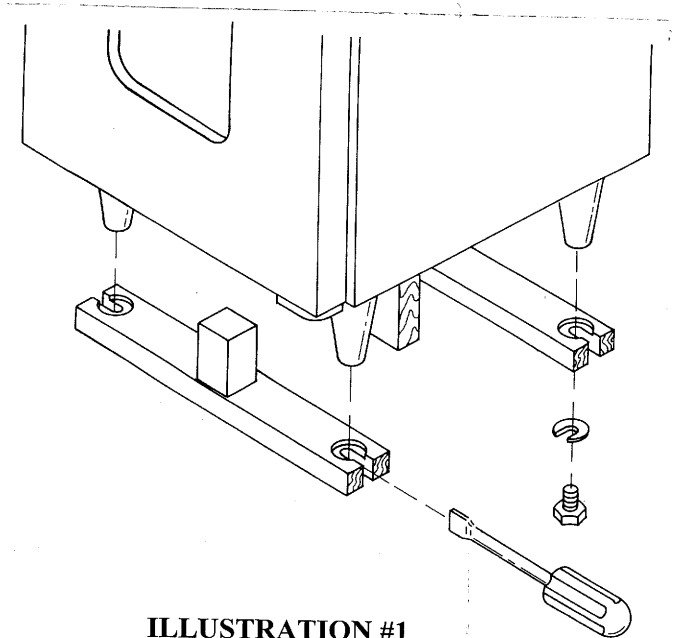


ILLUSTRATION #1

GROUNDING & ELECTRICAL:

For proper operation of any equipment utilizing electronically controlled components, it is recommended that the equipment be placed on an isolated or dedicated "noise" free circuit, properly polarized and grounded. The circuit should be a minimum 15 Amp, 115 Volt AC, 60 cycle.

For 220/240 Volt vendors the circuit should be a minimum 7.5 Amp, 220/240 Volt AC, 50 Cycle properly polarized and grounded.

Shown in Illustration #2 and Illustration #3 are two (2) properly grounded and polarized wall outlets. Illustration #2 is a three (3) wire grounding type wall outlet. Illustration #3 is a two (2) wire outlet with a three (3) plug adapter in place. To verify that the receptacle is properly grounded and polarized, insert one probe of a volt/ohm meter (set to check AC line voltage) or a test light in the ground terminal (hole) and the other probe into the "hot" terminal of the outlet. You should read 115 VAC on the volt/ohm meter or the test light should light.

NOTE:

The "hot" side of the outlet should always be counter-clockwise from the grounded terminal, with the ground terminal at the bottom.

If you find that the receptacle is not properly grounded, or polarized, you should contact a licensed electrician to correctly polarize and/or ground the receptacle to ensure safe operation.

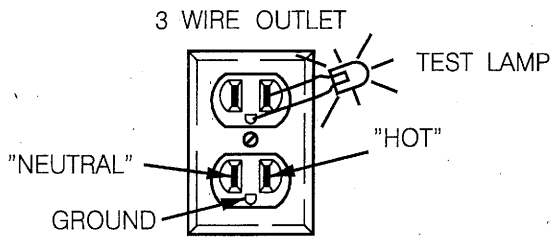


ILLUSTRATION #2

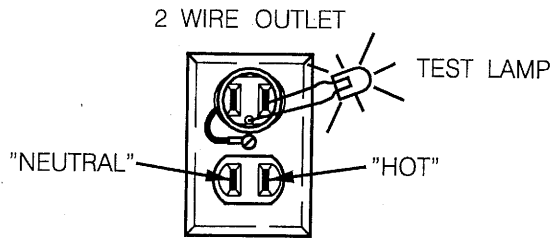


ILLUSTRATION #3

LOADING PRODUCTS:

To load products, lift tray slightly and pull forward until the tray stops. The upper most trays will tilt for ease of loading.

Load products from front to back, making sure all items fit freely between the augers. Do not attempt to force oversize items or packages into the spaces. All spaces forward **must** have a product loaded into them; **do not skip a space**. The bottom of the item or package should be placed on the bottom of the compartment above the product augers, with the label facing the front of the machine for easy identification by the customer. (See Illustration #4)

When finished loading each tray, make sure the tray is returned to its proper standby position. All trays **must** be pushed to the rear of the cabinet and properly seated in the "detent" position.

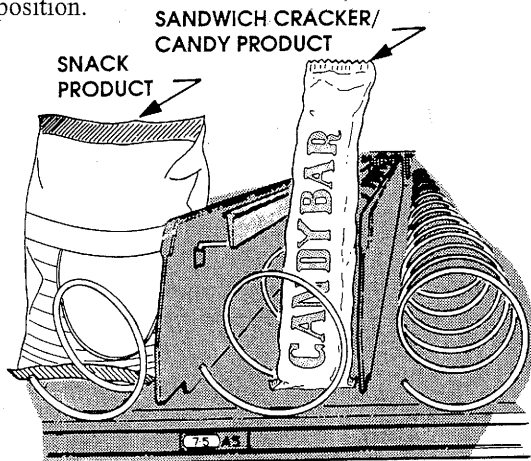


ILLUSTRATION #4

The size of the item being vended **must** be larger than the diameter of the auger being used to vend properly. Undersize items could cause vend problems. Various "pitched" augers are available. If the product does not fit the auger properly, it is recommended that a different "pitched" auger be used. The following is a list of augers and sizes that are available for this product line.

AUGER SIZES AVAILABLE				
AUGER TYPE	PRODUCT SIZE			AUGER PART NO.
	WIDTH	THICK	ITEMS	
CANDY	2 3/4	1 3/16	15	4200272-000
	2 3/4	15/16	18	4200272-001
	2 3/4	21/32	24	4200272-002
	2 3/4	1/2	30	4200272-003
	2 3/4	1 1/2	12	4200272-004
	2 3/4	2 1/32	9	4200272-005
	2 3/4	3 3/32	6	4200272-006
SNACK	5 1/2	1 13/16	10	4200272-007
	5 1/2	1 1/2	12	4200272-008
	5 1/2	1 3/16	15	4200272-009
	5 1/2	2-11/16	7	4200272-010
	5 1/2	2 5/8	8	4200272-011

Each auger can be rotated in 20 degree increments, changing the auger position for a different "drop-off" point. Most items can be vended successfully when the auger end is positioned at 6 o'clock. To change the auger end positions:

1. Remove the motor cover.
2. Raise up on the motor slightly and pull forward on the auger until it separates from the motor.
3. Rotate the auger to the desired position and re-insert the auger coupling into the motor.
4. Make sure the auger coupling is seated over the vertical rail or retaining rib on the tray.
5. Replace the motor cover making sure it is securely tightened.

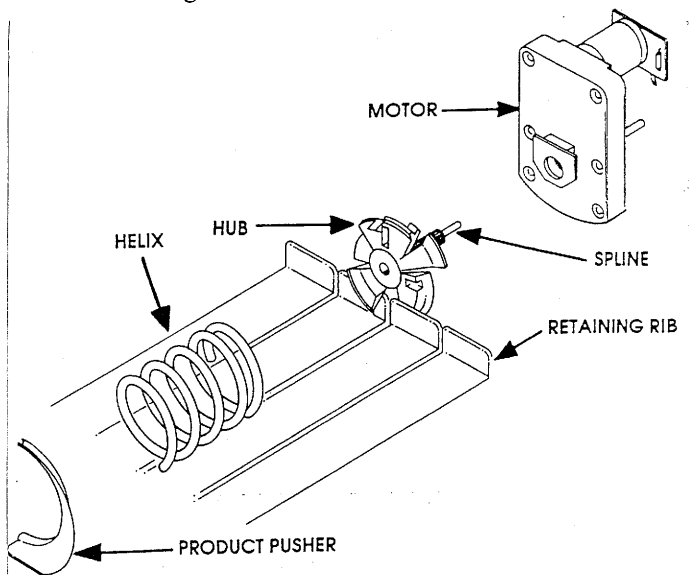


ILLUSTRATION #5

CHANGING TRAY SPACING & CONFIGURATION:

Adjustments to tray spacing, tray configuration and auger timing are provided to enhance the merchandising features of this vendor. By altering tray spacing, larger items can be vended. By changing the tray configuration, different product mixes can be accommodated. By re-timing the augers, difficult to vend items can be dispensed more dependably.

The trays can be adjusted up or down in one inch increments to provide additional headroom for vending taller products. It should be noted however, when increasing the height or spacing in one area, the same amount of room will be lost at the tray above or below the one being adjusted.

To change tray spacing, follow the steps outlined below:

1. Pull out the tray to be adjusted until it stops.
2. Disengage the tray harness from its "snap open" harness clamp on the right side wall.
3. Disconnect the tray plug from its receptacle on the right hand side wall.
4. Lift up on the front of the tray and pull slightly (approximately 1/2 inch) forward to clear the tray stop.
5. Lift up on the rear of the tray and remove it from the vendor.
6. Disengage both left and right tray rails from their corresponding slots on the left and right side walls by pulling inward on the bottom front of each rail and lifting it's flange out of the slot.
7. Pull each rail forward to disengage its rear tabs from the hole in the rear wall.
8. Re-locate both left and right rails by reversing steps 6 and 7.

NOTE:

Rails must be level from front to back and evenly spaced from top to bottom of each side.

9. Replace the tray by placing it's rear rollers on the left and right rails and lifting up on the front of the tray as it is pushed back.
10. Install the tray plug into its receptacle on the right side wall.
11. Re-engage the tray harness into its harness clamp and snap the clamp closed.
12. Test vend the tray in its new position to assure that the tray plug is properly seated.

CONFIGURATION INSTRUCTIONS (CANDY TO SNACK):

1. Unplug and remove the tray assembly from the vendor. Place the tray harness in the tray before removal.
2. Remove the motor cover and retain any hardware.
3. Remove existing tray divider and discard.
4. Remove existing auger assemblies and discard.
5. Remove the existing "even" numbered motor. This motor will not be needed.
6. Dress terminals removed from the motor around the tray harness and tape in place.
7. Move the "odd" numbered motor to the center slot of the compartment.
8. Install the auger retainer furnished as part of the conversion kit.
9. Install auger assembly furnished as part of the conversion kit, making sure the motor coupling properly engages the motor and is securely snapped over the vertical rail or retaining rib on the tray.
10. Re-assemble the motor cover removed in **step 2**.
11. Replace the tray assembly into the vendor making sure that the tray is properly located and latched and connect the tray harness
12. Set the selection to the desired vend price and adjust the price scroll to agree.

NOTE:

In large item selections, the selection numbers will be the "odd" numbers. **EXAMPLE:** Selection C3 and C4 converted to a single compartment, the selection number would become C3.

13. Test vend the converted selections for proper operation and price settings.

CONFIGURATION INSTRUCTIONS (SNACK TO CANDY):

1. Unplug and remove the tray assembly from the vendor. Place the tray harness in the tray before removal.
2. Remove the motor cover and retain any hardware.
3. Remove the existing auger assembly and discard.
4. Remove the auger retainer and discard
5. Move motor from the center slot to the left slot in the compartment.

6. Add the new motor furnished as part of the conversion kit in the right hand slot of the compartment.
7. Properly wire the motor and switch. (Refer to Wiring Diagram for wire colors and locations).
8. Add divider furnished as part of the conversion kit.
9. Install new auger assemblies furnished as part of the conversion kit, making sure the motor couplings properly engage with the motor and are securely snapped over the vertical rail or retaining rib on the tray.
10. Re-assemble the motor cover removed in **step 2**.
11. Replace the tray assembly into the vendor making sure that the tray is properly located and latched and connect the tray harness.
12. Set the selections to the desired vend price and adjust the price scrolls to agree.
13. **Test vend the converted selections for proper operation and price settings.**

The "Point of Sales" message is a programmable 100 character message and is usually an encouragement to the buying customer to purchase the products.

EXACT CHANGE ONLY MESSAGE

This message will be displayed when the change supply in the Coin Mechanism is below the "low level" sensors in the change tubes. When the pay-out tubes are low, the "EXACT CHANGE ONLY" message takes priority over the "Point of Sales" message and the "Discount Available Now" message.

DISCOUNT AVAILABLE NOW MESSAGE

This message will be displayed when the discount feature has been programmed into the controller and the feature becomes active. Refer to Discount Feature Section for instructions on setting the discount and activating this feature. When the "Discount Mode" Mode becomes active, the "Point of Sale" or the "Exact Change Only" message will also be displayed along with the Discount message.

CONTROLLER FUNCTIONS:

SALES MODE:

The "Sales Mode" is the normal operating mode of the vendor. When in the "Sales Mode" the controller will communicate with the buying customer with instructions pertaining to the vend requirements along with displaying necessary steps to accomplish the vend.

During normal operation, the following messages will be displayed at the display while the vendor is in the "Sales Mode".

"POINT OF SALES" MESSAGE - If the changer has adequate change.

"EXACT CHANGE ONLY" - If the payout level of coins in the changer coin tubes are below the low level sensors.

"DISCOUNT AVAILABLE NOW" - Along with one of the above when the discount mode is activated.

"POINT OF SALES MESSAGE"

This message will be displayed in a scrolling format and will appear continuously while the machine is in the "Sales Mode" or "stand-by condition" and the coin mechanism has an adequate supply of coins in the change tubes. If the change supply of the Coin Mechanism falls below the "low level" sensors in the payout tubes, the "EXACT CHANGE ONLY" message will appear.

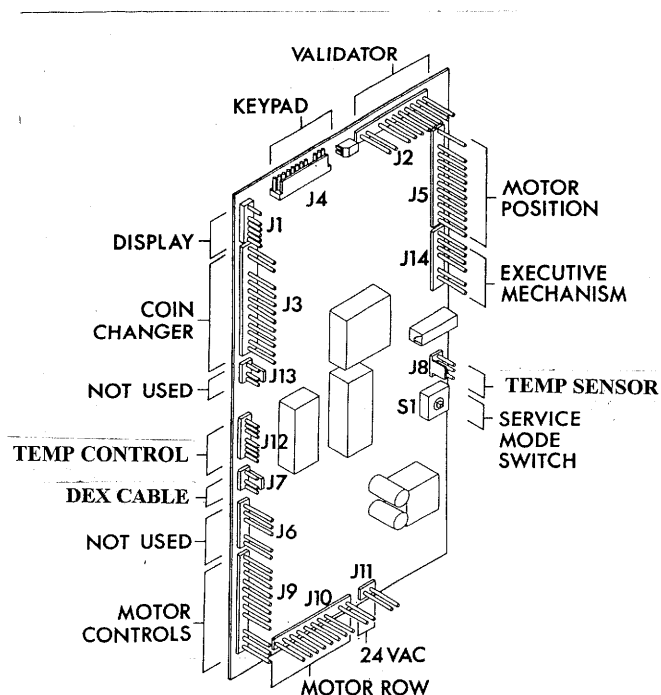


ILLUSTRATION #6

SERVICE MODE (LOW LEVEL):

The "Service Mode" will allow the service personnel access to the programming functions of the controller. The controller must be placed in the "Service Mode" to alter any programming, establish a new program, retrieve diagnostic information and other features.

When the controller is placed in the "Service Mode", faulty selections that have been detected by the controller will appear in the display. Record any information displayed. When faults are displayed the controller *must be cleared before any changes can be made to the programming* of the vendor. To clear the faults and exit the error mode, enter "ACK". When defective motors are displayed, that motor must be run successfully while in the *Service Mode* before the controller will configure it for future operation.

In the "Service Mode" the keys on the key pad will perform different functions, depending on the specific mode, or requirements of the program to be accomplished. The "key" functions will be defined in detail under each mode description throughout this manual. Furnished in the Service Packet is a key pad over-lay that can be placed over the key pad indicating the functions of individual keys while in the programming mode.

To place the controller in the "Service Mode", depress the service mode button on the control board. (See **Illustration #6**) Upon entering the "Service Mode" any electronic failures that occurred, since the last depression of the "Mode" switch, will be displayed. If no diagnostics are displayed, no electrical problems with the motors were detected. If failures are displayed they should be recorded immediately. Enter "ACK" on the key-pad to exit the error mode and remove the error information from the controller's memory.

Upon entering the *Service Mode*, any stored errors are displayed. **Errors are:**

"BATTERY BACKED RAM FAILURE" = This message is displayed if the system is unable to access the battery backed RAM

"MOTOR=" "This message is displayed to indicate motors which are jammed. To enable a jammed motor, that motor must be run successfully while in the *Service Mode*.

There are two (2) levels of the "SERVICE MODE", *Low Level* and *High Level*. Upon entering the Service Mode you are automatically in the "Low Level" which will allow access to the following program modes:

- "0" TEST VEND MACHINE
- "1" DISPENSE COINS
- "2" DISPLAY MOTOR COUNT
- "3" ALTERNATE "POS" MESSAGE
- "4" NON-RESETTABLE MIS
- "5" SET PRICE
- "6" SET TIME
- "7" ENTER HIGH LEVEL
- "8" TEST VEND BY SELECTION
- "9" TEST VEND BY ROW

NOTE:

To exit back to the "Sales Mode", push the "L" key on the selection keypad two (2) times, or press the control board "Service Mode" button once.

The Controller will automatically exit the "Service Mode" after approximately 25 seconds if no keypad input is detected.

DIAGNOSTICS (ERRORS): (LOW LEVEL):

Each time the controller is placed in the "Service Mode" it automatically enters the "diagnostic" or "error" area and any stored errors pertaining to the electrical circuit to the vend motors will be displayed if a particular selection failed to vend when selected by the buying customer. If an item is selected and the vendor is unable to complete the vend cycle, the controller will display to the buying customer "MAKE OTHER SELECTION", and that particular selection will be disabled and removed from the program. The faulty selection will remain inoperative until cleared or repaired.

Record any "errors" that are displayed. If error messages are displayed upon entering the service mode, the controller *must be cleared before any changes can be made to the programming* of the vendor.

NOTE:

To clear the controller of faults and exit the error mode, enter "ACK". When defective motors are displayed, that motor must be run successfully while in the "Service Mode" before the controller will configure it for future operation.

Each time the controller is switched in or out of the "Sales Mode" or "Service Mode", the motor circuits are scanned to determine the number of active or operational motors at that time. The diagnostics being displayed indicate the selections that were functional when the "Sales Mode" was last activated, however, due to failures or removal, are not in the circuit now. For instance, if during a vend, the controller detected a motor switch failure, that selection would be recorded as faulty and would be disabled and removed from the programming. That selection would appear as faulty when the "Service Mode" is entered.

Faulty motor selection numbers will be displayed in a rotational sequence. If no selection numbers are displayed when the controller is first placed into the "Service Mode", no electrical problems with motors were detected since the last depression of the "Service Mode" switch.

It is **IMPORTANT** that the information displayed be recorded immediately. Any input or key depression of the keypad could remove this information from the controller's memory and the failures would not be displayed again until that specific failure has been repeated during a normal vend cycle.

The selection number indicates the area where the problem was detected and will assist service personnel in isolating the source or cause of the problem.

COIN DISPENSE MODE: (LOW LEVEL):

In the "Coin Dispense Mode", coins that are stored in the coin mechanism pay-out tubes can be removed. To access the "**Coin Dispense Mode**" the controller must first be placed in the "Service Mode" by pressing the Service Mode button located on the Control Board. If no errors have been recorded by the controller "**ALL OK**" should be seen on the digital display.

Entering the "Coin Dispense Mode" is accomplished as follows:

1. Depress key "1" -"DISPENSE COINS" will scroll continuously on the digital display.
2. Depress key "A" - The nickel pay-out tube in the coin mech. will be activated.
3. Depress key "B" - The Dime pay-out tube in the coin mech. will be activated.
3. Depress key "C" - The Quarter payout tube in the coin mech. will be activated.
4. Depress key "D" - The Dollar payout tube in the coin mech. will be activated.

Pushing a pay-out key once will provide the pay-out of one coin. Pushing and holding a pay-out key will allow continuous coin dispense from the corresponding pay-out tube. Coins will

continue to be dispensed from the pay-out tubes as long as its activating key is depressed.

NOTE:

If a changer does not use a certain coin tube, as may be the case of Coinco L+ International Changers, there will be no activity when the corresponding pay-out key is depressed. Pushing any key other than "A", "B", "C" or "D" will exit back into the Service Mode, allowing access of other Service Mode functions. To exit back to the "Sales Mode", push the "L" key on the selection keypad two (2) times, or press the control board "Service Mode" button once.

TUBE FILL MODE:

When a **MDB Coin Mechanism** is used provisions are available to fill the coin payout tubes via the coin mech. This is necessary for the controller to know the "exact" number of coins that are in each coin tube to determine the combination of coins that will be refunded on over-deposit.

When in the "Coin Dispense Mode" pressing "**F**" will access the "fill" mode. Coins used for refund can be deposited through the coin mechanism and are accumulated in the controller's memory. Records maintained by the controller pertaining to any of the cash or vend counters of the accounting software are not affected by coins deposited while in this mode.

MOTOR COUNT MODE: (LOW LEVEL):

The "Motor Count Mode", when operated, indicates the total number of functional motors configured within the machine. This number should agree with the total number of selections that are in the machine. Only the total functional numbers will be flashed, individual selection numbers will not be displayed.

Entering the "Motor Count Mode" is accomplished as follows:

1. Place the Controller in the "Service Mode" by operating the Service Mode button located on the Control Board. "**ALL OK**" should be seen on the digital display.
2. Depress key "**2**" on the selection keypad. - The number of functional motors will be flashed for approximately 3 seconds, then returns to Service Mode, allowing access of other service mode functions. The count will be displayed in the format "**MOTORS XXX**"

EXAMPLE:

If there are 24 functional motors the display will show "**MOTORS 024**". This number should agree with the total number of selections in the machine.

If the motor count displayed does not agree with the total number of selections in the machine, this indicates that the electrical circuit of all motors is not complete. The service person should determine what motor (s) are not functioning. Listed below are suggested steps to be taken.

1. Were faulty motors displayed when placed in the service mode?
 Problem would be in the areas that were indicated in the display. A motor fault occurred during the Sales Mode operation or during an attempted vend.
2. Test vend all selections by pressing the service Mode button and pushing the "0" key on the selection keypad.
 Problem: Faulty selections will not vend
3. Refer to **Trouble Shooting** section of this manual for further assistance.

NOTE:
 To exit back to the "*Sales Mode*", push the "L" key on the selection keypad two (2) times, or press the control board "*Service Mode*" button once.

ALTERNATE "POS" MESSAGE:

In this mode, the scrolling message that is displayed while the machine is in the Sales or normal operation condition can be altered to also include the "EXACT CHANGE ONLY" message.

While in Level 1 of the service mode, press selection button "3", the display will scroll "POS/CORRECT CHANGE ALTERNATE, 1=ALTERNATE ON, 0=ALTERNATE OFF" followed by the current status ("ALT OFF" or "ALT ON"). To change the status, press the correspond key (1 or 0) and then "L" to save. To leave the status the same press "L".

NOTE:
 To change the status, do not press any key until the status is displayed.

NON-RESETTABLE MIS:

**MANAGEMENT INFORMATION SYSTEM)
 (LOW LEVEL)**

Pushing "4" causes the message "NON-RESETTABLE TOTALS" followed by "??=SEL" to be displayed. The total vends and total cash count taken for each selection is available for viewing via the digital display in three formats;

- INDIVIDUAL SELECTIONS
- ENTIRE ROW
- ENTIRE MACHINE

Entering individual selections, such as "A1" will cause the total vends and total cash for those selections to be displayed. Totals for an entire row can be shown by entering "AA" to display row "A" totals, "BB" for "B", etc. The entire machine totals are shown by entering "AL".

This information is not resettable to zero.

SET PRICE (LOW LEVEL):

All pricing is controlled by the controller and must be programmed into the controller's memory. The vend prices can only be programmed while in the "**Service Mode**". Vend prices are programmed into the memory of the controller by using the selection keypad to input the commands or requirements.

A vend price must be established for each selection. On items that will be vended at the same vend price, the "**Copy Price**" function can be used to duplicate the vend prices.

To establish vend prices, complete the following steps:

1. Place the controller in the "*Service Mode*" by operating the Service Mode button located on the control board. "ALL OK" should be seen on the digital display.
2. Enter the "*Set Price Mode*" by pushing the "5" key on the selection keypad. The message "SET PRICE - ENTER SELECTION" will scroll on the digital display followed by "??=SEL"
3. Enter the selection letter and number of the item to be priced. The selection number and current vend price of that selection will be displayed in the format "XX \$XX.XX", with the most significant digit of the price flashing.

EXAMPLE:
 If you are trying to price selection A1 and the current price of that selection is fifty cents, the display will show "A1 \$00.50", with the first zero flashing.

4. If you want the price to remain as it is, push the "J" key on the selection keypad to save it. To enter a new price, use the selection keypad numeric keys to edit the flashing digit, then push the "J" key on the selection keypad to save the new price, or the "C" key to copy the price to other selections (see "**COPY PRICE**" below), or the "L" key to exit back to the "*Service Mode*" without saving the price.

EXAMPLE:
 If the numbers 0, 1, 2 and 5 were entered, that item would have a vend price of \$1.25.

Once a selection price is saved, the prompt "??=SEL" will appear again on the digital display, allowing you to continue pricing other selections by repeating steps 3 & 4.

5. To copy the price of one selection to one or more of the other selections, push the "C" key on the selection keypad instead of the "J" key after editing the price. The display will flash the message "COPY PRICE" for 1 second, followed by "??".
6. Enter the selection letter and number of the selection to which you want the price to be copied. After each selection is entered, the display will flash the selection number and the price for 1 second to verify selection entry. Any selection made will now have the new price.

NOTE:

To exit back to the "Sales Mode", push the "L" key on the selection keypad two (2) times, or press the control board "Service Mode" button once. The Controller will automatically exit the Service Mode" after approximately 25 seconds if no keypad input is detected.

Check prices of items programmed by pushing the selection numbers on the selection keypad while in the "Sales Mode". The vend price will be flashed in the digital display.

IMPORTANT:

When establishing vend prices, make sure the price scroll located on the product shelves agree with the vend prices programmed into the controller and that the selection labels are properly located below the item they are identifying.

The following "step chart" indicates the basic steps that are required when establishing vend prices on individual selections. If more than one selection is being vended at the same vend price, the "Copy Price" function can be used.

- STEP 1:** Set controller in "Service Mode"
- STEP 2:** Enter price mode, push "5" key.
- STEP 3:** Enter selection to be priced
- STEP 4:** Enter desired vend price
- STEP 5:** Store price into memory - push the "J" key, or push "C" key to copy price.
- STEP 6:** Continue setting prices - repeat steps 3 thru 5.
- STEP 7:** After completing price setting - press service mode switch on control board.
- STEP 8:** Scrolling message appears in display. Machine is in the "Sales Mode". Check vend prices on selections edited.

NOTE:

The "S" sign is only displayed with the vend price when a U. S. coin mechanism is used.

VERIFYING VEND PRICES:

The vend price of each selection can be verified at anytime while the machine is in the "Sales Mode". To verify the price programmed into the controller, depress the specific selection number, the selection number and the current vend price will be displayed for approximately three (3) seconds. The price for each selection must also be identified by a "price scroll" on the tray under each product. Make sure the price programmed into the controller agrees with the labels affixed to the tray for each selection.

NOTE:

When the controller is in the "Discount Mode" and a time interval has been activated, the discounted price will be displayed. If that specific selection has been recorded as a faulty motor or has been removed by the controller, "SELECT OTHER ITEM" will be displayed. This indicates that the selection is not functional.

TIME PROGRAMMING: (LOW LEVEL)

This function is used in conjunction with the "DISCOUNT" to enter the correct time of day into the micro-processor. The time of day can also be displayed along with the Point of Sales Message.

To set the correct time, perform the following steps:

1. Place the controller in the "Service Mode" by operating the Service Mode button located on the control board. "ALL OK" should be displayed on the digital display.
2. Push key "6" on the selection keypad. The message "TO SET CLOCK ENTER "J" will scroll continuously on the digital display.
3. After pushing "J" on the selection keypad, the current time as recognized by the micro-processor will be displayed in the format "TIME XX:XX" , with the most significant digit flashing.
4. To enter the correct time, use the numeric keys on the selection keypad to edit the flashing digit, then push the "J" key to save the change, or the "L" key to exit the function without saving the change.

NOTE:

The time must be entered in the 24 hour, or military format.. **EXAMPLE:** Current time is 4:23 P.M., you would enter it as 16:23 in the set time function. Likewise, 8:30 P.M. would be entered as 20:30.

To display the time on the digital display during the "Sales Mode", refer to the "POINT OF SALES PROGRAMMING INSTRUCTIONS" in the "High Level" programming section.

NOTE:

To exit back to the "Sales Mode", push the "L" key on the selection keypad two (2) times, or press the control board "Service Mode" button once.

TEST VEND MODES: (LOW LEVEL)

CAUTION: BECAUSE THIS VENDOR UTILIZES DC MOTORS, DO NOT ATTEMPT TO TURN THE HELIX MANUALLY OR DAMAGE TO THE MOTOR COULD OCCUR

The operational functions of the vendor can be verified by running various test vends. The machine can be tested by individual selections, a complete row, or all selections in the entire machine. When the test commands are entered, the controller will check the motor circuit and run the selection through one complete vend cycle if the circuit is complete and the motor is functional. If the motor is not functional, or the motor circuit is not complete on a particular selection or row, the test function will not be made.

The testing functions and vending of the products while in the "Test Vend" modes will not affect the records maintained by the controller pertaining to any of the cash or vend counters of the accounting software.

The test vend modes are very useful in helping to identify any faulty motors or motor circuits and , when used in tandem with the *Trouble Shooting* section, can quickly point a service technician to the problem area.

TEST VEND SINGLE SELECTION (LOW LEVEL):

Single selections can be test vend to verify that they are functioning properly. The controller will check the motor circuit and run the selection through a complete vend cycle if the circuit is complete and the motor is functional. Vending items while in the "Test Vend Modes" will not affect the records maintained by the controller pertaining to any of the cash or vend counters of the accounting software.

To test vend a single selection, perform the following steps:

1. Place the controller in the "Service Mode" by operating the Service Mode button located on the control board. "ALL OK" should be seen on the digital display.
2. Depress the "8" key on the selection keypad. The message "TEST VEND - ENTER SELECTION" will be scrolled on the display, followed by the prompt "?? = SEL".
3. Enter the letter and number of the selection to be tested. If the motor under test is functional, the motor will run one complete cycle and the selection number and price of the selection being tested will be seen on the digital display for the duration of the motor run.

NOTE:

If the test vend is successfully completed, the prompt "?? = SEL" will again appear in the digital display, allowing continued testing of other motors. If a selection cannot be run successfully, the message "JAMMED" will be displayed.

To test vend another selection, repeat step 3.

NOTE:

To exit back to the "Sales Mode", push the "L" key on the selection keypad two (2) times, or press the control board "Service Mode" button once.

TEST VEND COMPLETE ROW: (LOW LEVEL)

All selections in a complete row can be tested to verify that they are functioning properly. The controller will check the motor circuits and run each selection in a single row, starting with the number "1" selection, if the circuit is complete and the motors are functional.

While using the "row" test functions, it will be necessary to observe the testing of the selections to verify the operation, as the controller will skip any motor(s) that is not sensed on the motor circuit prior to beginning the row test. If none of the motors are sensed when the test sequence starts, the controller will automatically return to the "Service Mode" and await further input.

Vending items while in the "Test Vend Modes" will not affect the records maintained by the controller pertaining to any of the cash or vend counters of the accounting software.

To test vend a complete row of motors, perform the following steps:

1. Place the controller in the "Service Mode" by operating the Service Mode button located on the control board. "ALL OK" should be seen on the digital display.

2. Depress key "9" on the selection keypad. The message "TEST VEND - ENTER ROW" followed by the prompt "? = ROW".
3. Pushing a "row" letter on the selection keypad will start the test vend sequence, beginning with the first motor of that row. As each motor runs in sequence, the display will show the selection number along with the price of the selection being tested in the format "XX=SEL". Once all motors have been tested, the program returns to the "Service Mode" for further input.

3. Pushing the "J" key on the selection keypad will start the test vend sequence, beginning with the first motor of the first row. As each motor runs in sequence, the display will show the number of the selection along with the vend price of the selection being tested in the format "XX = SEL". Once all motors have been tested, the program returns to the "Service Mode" waiting for further input.

The machine test may be stopped at any time by pushing and holding any key on the selection keypad during the test. Doing this returns the program to "Service Mode".

NOTE:

To exit back to the "Sales Mode", push the "L" key on the selection keypad two (2) times, or press the control board "Service Mode" button once.

The row test may be stopped at any time by pushing and holding any key on the selection keypad during the test. Doing this returns the program to the "Service Mode".

To test vend another row, repeat steps 2 and 3. Remember any motor that will not function properly, due to a fault or a bad connection, will be skipped by the test procedure.

NOTE:

To exit back to the "Sales Mode", push the "L" key on the selection keypad two (2) times, or press the control board "Service Mode" button once.

TEST VEND COMPLETE MACHINE: (LOW LEVEL)

All selections in the entire machine can be tested to verify that they are functioning properly. The controller will check the motor circuits and run each selection, starting with the first motor in the first row, if the circuit is complete and the motors are functional.

While using the "machine" test function, it will be necessary to observe the testing of the selections to verify the operation, as the controller will skip any motor(s) that is not sensed on the motor circuit prior to beginning the machine test. If none of the motors are sensed when the test vend sequence starts, the controller will automatically return to the "Service Mode" and await further input.

Vending items while in the "Test Vend Modes" will not affect the records maintained by the controller pertaining to any of the cash or vend counters of the accounting software.

To test vend the machine, perform the following steps:

1. Place the controller in the "Service Mode" by operating the Service Mode button located on the control board. "ALL OK" should be seen on the digital display.
2. Depress key "0" on the selection keypad. The message "PRESS THE 'J' KEY TO VEND ENTIRE MACHINE" will be scrolled in the digital display.

SERVICE MODE:(HIGH LEVEL)

To access the "Upper Level" of the Service, operate the "Service Mode" switch on the controller and then depress "7" on the key-pad. The digital display will display the message "ENTER CODE" followed by "CODE=????". The fixed access code (1,2,3,4) is then entered. If the access code is entered correctly, the message "ACCEPTED" will be displayed, followed by "HIGH LEVEL". If the access code is entered incorrectly, the message "REJECTED" will be displayed, followed by "SERVICE". Once the "High Level" Service Mode has been accessed, the following functions can be programmed:

- 0 = ALL OPTIONS OFF
- 1 = "NO EXACT CHANGE" MODE - Active only when a MDB Coin Mechanism is used
- 2 = FORCED VEND
- 3 = DISCOUNT MODE
- 4 = LANGUAGE
- 5 = LOTTERY ODDS
- 6 = NOT USED
- 7 = RESETTABLE MIS
- 8 = MIS TOTALS
- 9 = STOP CLOCK
- A = MULTI-VEND
- B = EDIT POINT OF SALE MESSAGE
- C = AUTO REINSTATEMENT
- D = PROMO-VEND
- E = RESETTABLE MIS
- F = NOT USED
- G = REFRIGERATION CONTROLS
- H = MENU MART (SATLLITE) INTERFACE

Each of the above will be defined in detail throughout the manual.

"0" - ALL OPTIONS OFF (HIGH LEVEL)

This can be used as a "quick reset" to turn off the *Force Vend*, *Multi Vend* and *Discount* options if any of these are being used. Pushing "0" turns *Forced Vend*, *Multi-Vend* and *Discounts* off without having to access each option to turn them off, only one step is necessary.

"1" - NO CHEAT MODE: (HIGH LEVEL)

The features of this mode can only be utilized when a **MDB Coin Mechanism** is used. When the coins in the changer's payout tubes are below the low level sensors, there may be instances that full credit cannot be refunded on an over-deposit. In this mode the controller can be programmed to prevent a vend from being made if the changer does not have the "exact" change combination to refund credit on an over deposit. Pressing "1" when in "high level", the controller will indicate the current status ("NC ON" or "NC OFF"). Pushing "1" turns "No Cheat" on. Pushing "0" turns "No Cheat" off. Changes are saved by pushing the "J" key. The "L" key will exit to "SERVICE" without changing the option.

When the "No Cheat on" mode is selected a vend will not be made if the changer cannot refund change for over-deposit. If a selection is made that requires a payout that the changer cannot make, the credit will be returned to the buying customer and a vend will not take place.

When the "No Cheat off" mode is selected and a refund is required on over deposit, the changer will refund change until the specific change tube is empty. The remaining credit will be displayed for 20 seconds, waiting for additional money to equal another vend. After 20 seconds the credit will be removed. The only way the buying customer can receive the remaining credit is to deposit the exact change equal to another vend.

"2" - FORCED VEND (HIGH LEVEL)

This feature, when selected, prevents the buying customer from receiving change without making a purchase when a dollar bill is inserted. When the "Force Vend" mode is selected, the controller will force the buying customer to make a purchase when a dollar bill is inserted, overriding the "coin return" command. When the force vend mode is on, coin return of 5¢, 10¢, and 25¢ coins is not affected.

Pushing "2" causes the current status of "Forced Vend" to be displayed. The display indicates: "FV ON" or "FV OFF". Pushing "1" turns "Forced Vend" on. Pushing "0" turns "Forced Vend" off. Changes are saved by pushing the "J" key.

The "L" key will exit to "SERVICE" without changing the option.

"3" - DISCOUNT MODE (HIGH LEVEL)

This feature provides up to three (3) programmable time intervals that will allow a range of selections to be discounted by a programmable amount. During the "Sales Mode" operation, if one of the discounting intervals is on, the message "**DISCOUNT AVAILABLE NOW**" will scroll alternately with the "**POINT OF SALE MESSAGE**".

WARNING:

Any selection with a vend price equal to or less than the discount amount will be free vended.

Pushing "3" causes the message "**DISCOUNT GROUP=1 2 3**" to be displayed. Discount groups which are on will be flashing. Pushing "1", "2", or "3" will select the group to edit. After a group is selected, the status of that group is shown in the digital display with the message: "GRP # OFF". Pushing "1" will turn that group on. Pushing "0" will turn that group off.

The next display: "**ROW -1**", prompts for the beginning row for the discount group. Press the letter corresponding to the desired row and then press "0" to continue.

Next, the ending row letter is requested with the message: "**TO -0**". Press the letter corresponding to the desired row and then press "0" to save.

Next, the amount of the discount is then requested with the message: "**DISC \$00:00**". Enter the amount for the discount. The discount amount is saved by pushing "J", or left unchanged by pushing "L".

The discount start time is then entered in response to the message: "**TIME 00:00**". Enter the desired start time. The time is saved by pushing "J" or left unchanged by pushing "L".

The discount end time is then entered in response to the message: "**TO 00:00**". Enter the desired end time. The time is saved by pushing "J" or left unchanged by pushing "L".

Additional discounts can now be changed, or pushing "L" will exit to "HIGH LEVEL" Service Mode.

"4" - LANGUAGE (HIGH LEVEL)

There are five (5) pre-programmed languages and one (1) auxiliary (user defined) option. Only one of these language choices may be used. Listed below are the choices:

B = DUTCH **E = ENGLISH**
F = FRENCH **G = GERMAN**
H = SPANISH **D = ITALIAN**
A = Auxiliary (user defined)

Pushing "4" causes the currently assigned language to be displayed: "E=ENGLISH". A predefined language can be chosen by entering the appropriate letter, followed by "J" to save. Press "L" to exit.

If the auxiliary language "A" is chosen, the equivalent of the following six (6) messages can be entered.

- 1 "USE CORRECT CHANGE"
- 2 "USE COINS ONLY"
- 3 "MAKE ANOTHER SELECTION"
- 4 "SELECT FREE ITEM"
- 5 "DISCOUNT AVAILABLE NOW"
- 6 "YOU WIN"

Thirty (30) character positions are available for each message. The messages are viewed or edited using the same method as the "Point of Sale" message described under HIGH LEVEL "B". (see EDIT POINT OF SALE MESSAGE (HIGH LEVEL) page #16).

"5" - LOTTERY ODDS (HIGH LEVEL)

The "LOTTERY" mode awards a free vend to the customer during the Sales Mode. When the customer is awarded a free vend, the controller will display "YOU WIN" and beep five times.

Pushing "5" causes the message "ODDS 0000" to be displayed. The desired odds are entered and saved with the "J" key. "L" exits the lottery mode without saving. The odds number represents the fixed number of vends between lottery winners.

EXAMPLE:
Setting the odds at 0100 the controller would initiate a free vend every 100th vend.

"7" - RESETTABLE MIS:

**(MANAGEMENT INFORMATION SYSTEM)
(HIGH LEVEL)**

This function provides access to sales information that has been accumulated since the machine was previously serviced. Pushing "7" causes the message "RESETTABLE TOTALS" followed by "??=SEL" to be displayed.

The total vends and total cash count taken for each selection is available for viewing via the digital display in three formats;

INDIVIDUAL SELECTIONS
ENTIRE ROW
ENTIRE MACHINE

Entering an individual selection, such as "A1" will cause the total vends and total cash for that selection to be displayed. Totals for an entire row can be shown by entering "AA" to display row "A" totals, "BB" for "B", etc. The entire machine totals are shown by entering "AL".

The sales information in this function IS resettable to zero by following the instructions outlined as "E " RESETTABLE MIS". (See page #17)

"8" - MIS TOTALS:

**(MANAGEMENT INFORMATION SYSTEM)
(HIGH LEVEL)**

This function gives access to additional Non-Resettable MIS information that may or may not be available in the Resettable and Non-Resettable functions.

Pushing "8" causes the following message to be scrolled in the display:

"A"=TOTAL VENDS
"B"=TOTAL CASH
"C"=TOTAL VALUE CARD
"D"=TOTAL LOTTO/PROMO
"E"=TOTAL BILLS
"F"=TOTAL DISCOUNTS
followed by "??=CHOICE"

Pushing the letters "A- F" will show the "total" message followed by the total amount. Pushing the letter twice the message will be skipped and only the amount will be shown. Pushing "L" will exit to "HIGH LEVEL".

"9" - STOP CLOCK: (HIGH LEVEL)

If the machine is to be placed in storage or out of operation for a long period of time, the clock should be stopped to preserve the life of the battery.

Pushing "9" causes the message "TO STOP CLOCK ENTER "J" to be displayed. Pushing "J" stops the clock and exits. Pushing any other key will exit with the clock running.

"A" - MULTI-VEND: (HIGH LEVEL)

This feature will allow multiple purchases to be made without re-entering additional money as long as adequate credit is available. Instead of immediately returning the change after a vend, the credit will remain on the display for up to 25 seconds. When the "Multi-Vend" mode is "ON", to receive

change on an over-deposit, the "Coin Return" button must be pushed. If a coin return is not requested within 25 seconds the change will be returned automatically.

Pushing "A" causes the current status of "Multi-Vend" to be displayed. The display will indicate "MV ON" or "MV OFF".

Push "1" to turn Multi-Vend on.

Push "0" to turn Multi-Vend off.

Push "J" to save changes. Push "L" to exit to "HIGH LEVEL" without changing the option.

"B" - EDIT POINT OF SALE MESSAGE:
(HIGH LEVEL)

Provisions have been incorporated into the controller for a point of sales message that will be displayed to the buying customer. This message can be used by the owner/operator as advertising or an encouragement to the buying customer to purchase the products. The point of sales message will appear continuously while the machine is in a standby condition as long as the coin mechanism has an adequate supply of coins in the payout tubes. If the change supply in the coin mechanism is below the "low-level" sensor in the payout tubes, the "EXACT CHANGE ONLY" message will appear.

The sales message can be changed on location by accessing the "EDIT POINT OF SALE MESSAGE" mode. Messages can include up to 100 characters including spaces. While in the editing mode the key pad will function similar to a typewriter keyboard. A "Key Pad Overlay" is furnished in the Service Packet defining the positioning of the characters. By placing the over lay over the selection panel, the owner operator can "type" the new message into the controller's memory.

The following will define the steps to be taken to enter a new message or edit an existing message:

1. Put the controller in the "Service Mode" by depressing the "Service Mode" switch on the control board.
2. Enter the "High Level" programming of the controller by pressing "7".
3. Access the "EDIT POINT OF SALE MESSAGE" by pressing "B"
4. Type in the new message (maximum of 130 characters, including spaces).

Use the key pad overlay for the location of characters on the key pad.

5. Enter the message into the controller's memory by depressing the "NEXT MENU" key twice.

NOTE:

If the keys defined in Step 4 are not properly entered when the programming of the new message is complete, portions of the previous message may appear.

A	G	N
K	Y	4
B	H	O
Q	Z	5
C	I	P
U	0	6
D	J	R
V	1	7
E	L	S
W	2	8
F	M	T
X	3	9
SPACE	NEXT MENU	BACK SPACE
*	ENTER	\$

NOTE: The upper characters in each block are accessed directly by depressing the desired key while the bottom characters in each block can only be accessed by depressing the "NEXT MENU" key each time those characters are needed.

NOTE: Use the key-pad over lay furnished in the Service Packet to identify the location of the characters illustrated

ILLUSTRATION #9

In addition to the scrolling "point of sales message", various special inputs can be included in the display.

The following special character sequences are available:

- *+B = Issue one beep.
- *+D = Display the temperature of the refrigerated compartment.
- *+H = Scroll Message Horizontally (default mode).
- *+P= Pause the display 0.5 seconds per occurrence.
- *+T = Display time in 12 hour format.
- *+V = Scroll the following portion of the message vertically.

"C" - AUTO REINSTATEMENT (HIGH LEVEL):

This function has been incorporated to be used in conjunction to a satellite can drink or similar type vendor utilizing a "sold-out" or "empty" switch. When an empty selection is detected during an attempted vend, the controller will render that selection in-operative which would normally require resetting the controller before that particular selection could be vended

again. The satellite units use a range of selections within the controller and use a switch in series with the motor as a "sold-out" switch. Programming this range of selections into the "auto reinstatement" will eliminate the necessity of resetting the controller after re-loading a selection that had went into an "empty" condition.

Pushing "C" causes the message "INPUT AUTO-REINSTATEMENT RANGE" followed by "I=ON 0=OFF" to be displayed. Pushing "0" turns this feature off and exits to "HIGH LEVEL". Pushing "1" causes the message "BEGIN --" to be displayed. Enter the beginning alpha-numeric selection. When alpha is flashing, press "0" to save the setting. The message "END --" is then displayed. Enter the ending alpha-numeric selection. When the alpha is flashing, press "0" to save the setting and exit.

"D" - PROMO VEND (HIGH LEVEL):

There are three (3) groups or ranges within the "Promo Vend" function. The "Promo Vend" option may be used as a Sales tool by the owner/operator to promote new items. It allows the customer to buy one item, (within one of the three programmable ranges) and get a second item (within a programmable range) free.

Pushing "D" causes the message "PROMO GROUP = 1 2 3" to be displayed. Promo groups which are on will be flashing. Pushing "1", "2", or "3" will select a group to edit. After a selection is made, the status of that group is shown with the message "GRP 1 OFF". Pushing "1" will turn group "1" on. Pushing "0" will turn group "1" off. The next display "BUY-" prompts for the beginning selection in the *buy* range. Enter the beginning alpha/numeric selection and press "0" when the alpha is flashing to save the setting. The next display "TO --" prompts the ending selection in the *buy* range. Enter the ending alpha/numeric selection and press "0" when the alpha is flashing to save the setting. The next display "FREE --" prompts for the beginning selection in the *free* range. Enter the beginning alpha/numeric selection and press "0" when the alpha is flashing to save the setting. The next display "TO --" prompts for the ending selection in the *free* range. Enter the alpha/numeric selection. Press "0" to save and exit to "HIGH LEVEL".

After a successful "purchased" vend, the controller will scroll "SELECT FREE ITEM" one time, followed by "XX TO XX", which indicates the range of free items available. This will scroll continuously for 25 seconds or until a patron selects the free item. If a selection outside the "free" range is selected, or if a "free" vend fails, the controller will give an error beep and scroll "PLEASE MAKE ANOTHER SELECTION" once before returning to "XX TO XX".

"E" - RESETTABLE MIS (HIGH LEVEL):

This function resets all individual motor counters defined as resettable to zero. The information stored in the non-resettable counters will not be affected by resetting this function. This is most useful when you want sales information collected between service calls to the location. At the end of servicing the machine, after sales information has been collected, you can use this function to reset resettable sales information to zero. The next time the machine is serviced, access the sales information from function "7" **RESETTABLE MIS** described above to review the cash and vend totals collected since the previous visit.

Pushing "E" causes the message "RESET MIS?" to be displayed. Pushing "J" will reset *MIS* and exit to "HIGH LEVEL". Any other key will exit to "HIGH LEVEL" without resetting the *MIS*.

"G" - REFRIGERATION CONTROL (HIGH LEVEL):

To access the programming of the controls for the Refrigeration System, the controller must be placed in the "High Level" of the service programming and advanced to the "G" mode..

Operate the "Service Mode" switch located on the controller and then depress "7" on the key-pad. The display will display the message "ENTER CODE" followed by "CODE=????". The fixed access code (1,2,3,4) is then entered. If the access code is entered correctly, the message "ACCEPTED" will be displayed, followed by "HIGH LEVEL". If the access code is entered incorrectly, the message "REJECTED" will be displayed, followed by "SERVICE". Once the "High Level" Service Mode has been accessed, press "G" on the key-pad the Refrigeration Controls can now be programmed into the controller.

Once the "G" function has been selected, seven (7) sub-menus will be scrolled in the display. The following is a list of these sub-menus:

- 0= REFRIGERATION CONTROL ON/OFF
- 1= DEFROST COMMAND
- 2= TEMPERATURE DISPLAY MODE
- 3= CUTIN TEMPERATURE
- 4= CUTOFF TEMPERATURE
- 5= DEFROST DURATION
- 6= DEFROST START TIMES

REFRIGERATION CONTROL - ON/OFF:

This feature pertains to a "Health Safety" feature and will prevent the sale of items if the temperature inside the cabinet area exceeds 45° (F), 7.2 (C). Due to the operating

temperature range of this vendor this feature should be turned "OFF" at all times.

Pressing "0" will display the message: "INPUT REFRIGERATED SELECTION RANGE" followed by "BEGIN --". Enter "0" as this area is not used for the refrigerated round front machines. The next display: "END" prompts for the ending selection. Enter "0", as this area is not used.

The next message: "1=ON" "0=OFF" will now be displayed. Press "0" to turn this feature off, the controller will advance to the Refrigeration Control Menu.

DEFROST COMMAND:

This feature allows the vendor to be placed in a manual defrost condition. Pressing "1" will display the message "PUSH 'D' FOR MANUAL DEFROST 'L' TO ABORT. Push "D" for manual defrost or "L" to abort and return to the Refrigeration Control Menu. #5 below will determine the duration of the defrost cycle.

TEMPERATURE DISPLAY MODE:

This feature allows the temperatures recorded to be displayed either in Fahrenheit or Celsius. Push "F" to enter the temperatures in Fahrenheit. Push "C" to enter the temperatures in Celsius.

Push "L" to abort and return to the Refrigeration Control Menu.

CUT IN TEMPERATURE:

This feature will controls when the compressor will turn on. The maximum "cut-in" temperature is +70° (F), +21° (C). The factory setting is +65° (F), +18° (C). Pushing "3" will display the message "CUTIN +--". Use "1" to enter a plus (+). Enter the new temperature at which the compressor will turn on, keep in mind the recommended factory setting of 65° (F). Push "J" to save the new setting and return to the Refrigeration Control Menu.

CUTOUT TEMPERATURE:

This feature will controls when the compressor will turn off. The maximum "cut-out" temperature is +65° (F), +18° (C). The factory setting is +58° (F), +14° (C). Pushing "4" will display the message "CUTOUT +--". Use "1" to enter a plus (+). Enter the new temperature at which the compressor will turn on, keep in mind the recommended factory setting of 58° (F). Push "J" to save the new setting and return to the Refrigeration Control Menu.

SET DEFROST TIME:

This feature will control the time that the system remains in a defrost cycle. The maximum defrost time is 39 minutes. The factory setting will be set at 10 minutes. Pressing "5" will display "DF TIME XX". Enter new time and press "J" to save and return to the Refrigeration Control Menu.

DEFROST START TIMES:

This feature will control the time the system will automatically be placed into a defrost mode. Up to four (4) defrost times are available for a duration of up to 39 minutes. The factory settings will be set to "00.00" as a defrost is not necessary. If the recommended setting does not provide optimum results in your environment, the settings may be tailored to suit your needs.

Pushing "6" will display the message "DEFRI 00.00". Enter the first defrost time (in 24 hour format) and press "L" to save and continue. When all (4) times are set and saved the controller will advance to the Refrigeration Control Menu.

NOTE:
The system will automatically go into a defrost cycle if the compressor runs continuously for 2 hour period.

QUICK REFERENCE SERVICE COMMANDS - PRESS SERVICE MODE SWITCH ON CONTROL BOARD AND ENTER THE HIGH LEVEL PROGRAMMING AREA AND FOLLOW STEPS OUTLINED BELOW		
MODE KEY	FUNCTION MODE	TO PROGRAM ENTER THE FOLLOWING
G + 0	REFRIGERATION SELECTION RANGE	"G" + "0" BEGIN (SEL) + 0 END (SEL) + 0 "1" TO TURN CONTROL ON "0" TO TURN CONTROL OFF
G + 1	DEFROST COMMAND	"G" + 1 + D = START L = ABORT
G + 2	TEMPERATURE DISPLAY	"G" + 2 + F = FAHRENHEIT "G" + 2 + C = CELSIUS L = ABORT
G + 3	CUT-IN TEMPERATURE	"CUT IN --" "1" TO ENTER (+) "0" TO ENTER (-) ENTER TEMPERATURE
G + 4	CUT-OUT TEMPERATURE	"CUT OUT --" "1" TO ENTER (+) "0" TO ENTER (-) ENTER TEMPERATURE
G + 5	DEFROST DURATION	"DF TIME XX" 10 MIN. RECOMMENDED
G + 6	DEFROST START TIMES	"DEFRI 00.00 FACTORY RECOMMENDATION - ALL TIMES SET TO 00.00

EURO ROUND FRONT - PROGRAMMING PROCEDURES

QUICK REFERENCE SERVICE COMMANDS:

Press Service Mode on the Control Board and follow the steps outlined below:

NOTE: To remove service faults, press service mode and then press "ACK"

MODE KEY	FUNCTION	TO PROGRAM ENTER THE FOLLOWING
1	DISPENSE COINS	"1" PLUS "A" = 5¢ "1" PLUS "B" = 10¢ "1" PLUS "C" = 25¢ "1" PLUS "D" = \$1.00 (IF APPLICABLE) "1" PLUS "F" - FILL COIN TUBES (NON CREDIT)
2	MOTOR COUNT	"2" = NUMBER OF ACTIVE MOTORS
3	ALTERNATING P.O.S. OR PERMANENT "USE EXACT CHANGE	"1" = ALTERNATE ON PLUS "J" OR "0" = ALTERNATE OFF PLUS "J"
4	NON-RESETTABLE MIS	"4" PLUS SELECTION "4" PLUS (SEL) ROW LETTER TWICE "4" PLUS "AL" MACHINE TOTAL
5	SET PRICE	"5" PLUS (SEL) PLUS (PRICE) PLUS "J" OR "L" TO EXIT WITHOUT SAVING
	COPY PRICE	"5" PLUS (SEL) PLUS (PRICE) PLUS "C" PLUS (SEL) PLUS (SEL) PLUS "L" TWICE
6	SET TIME (24 HOUR MODE)	"6" PLUS "J" PLUS (TIME OF DAY) PLUS "J"
7	SERVICE MODE - HIGH LEVEL	"7" PLUS ACCESS CODE - ????
8	TEST VEND SINGLE SELECTION	"8" PLUS (SEL) - "L" TWICE TO EXIT
9	TEST VEND ENTIRE ROW	"9" PLUS (ROW) - ANY KEY TO EXIT
0	TEST VEND ENTIRE MACHINE	"0" PLUS "J" - ANY KEY TO EXIT

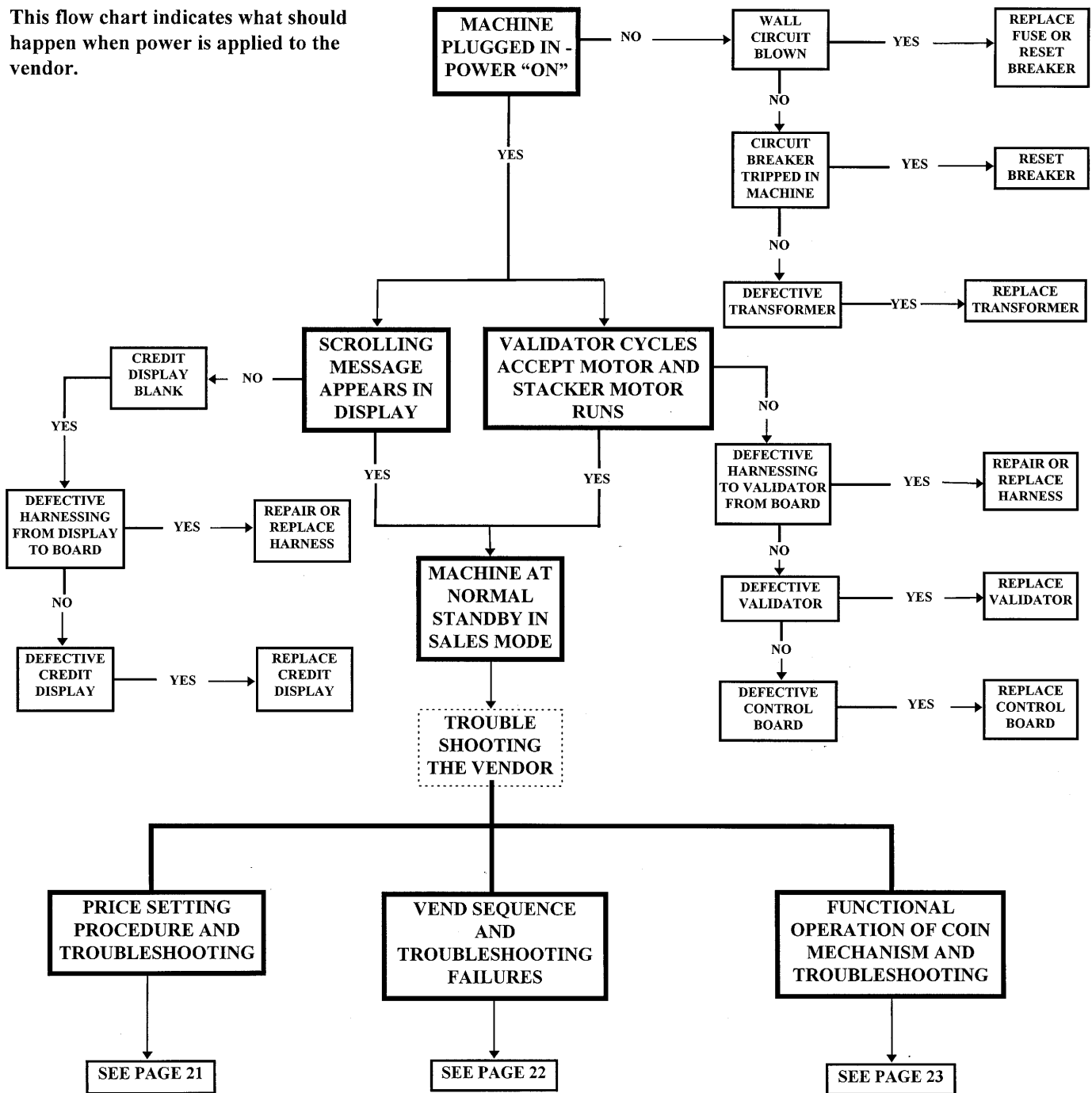
7	HIGH LEVEL SERVICE MODE	"7" PLUS ACCESS CODE = ????
0	ALL OPTIONS OFF	"0" = OFF
1	NO CHEAT MODE	"1" - NO CHEAT "ON" "0" - NO CHEAT "OFF" "L" - EXITS WITHOUT SAVING
2	FORCED VEND	"1" = FORCED VEND "ON" "0" = FORCED VEND "OFF" "L" = EXITS WITHOUT SAVING
3	DISCOUNT GROUP	REFER TO SERVICE MANUAL
4	LANGUAGE	"E" PLUS "J" = ENGLISH "F" PLUS "J" = FRENCH "G" PLUS "J" = GERMAN "H" PLUS "J" = SPANISH "D" PLUS "J" = ITALIAN "A" = AUXILIARY
5	LOTTERY ODDS	"ODDS 0000" PLUS "J"
7	RESETTABLE MIS	"7" PLUS SELECTION "7" PLUS (SEL) ROW LETTER TWICE "7" PLUS "AL" MACHINE TOTAL
8	MIS TOTALS	"8" PLUS "A" = TOTAL VENDS "8" PLUS "B" = TOTAL CASH "8" PLUS "C" = TOTAL VALUE CARD "8" PLUS "D" = TOTAL LOTTERY/PROMO "8" PLUS "E" = TOTAL BILLS "8" PLUS "F" = TOTAL DISCOUNT
9	STOP CLOCK	"9" PLUS "J"
A	MULTI-VEND	"A" PLUS "1" = MULTI-VEND "ON" "A" PLUS "0" = MULTI-VEND "OFF"
B	EDIT POINT OF SALE MESSAGE	REFER TO SERVICE MANUAL
D	PROMO VEND	REFER TO SERVICE MANUAL
E	RESET MIS	"E" PLUS "J"
G + 0	REFRIGERATION SELECTION RANGE	G + 0 BEGIN (SEL) + 0 END (SEL) + 0 PRESS "1" TO TURN HEALTH CONTROL "ON" PRESS "0" TO TURN HEALTH CONTROL "OFF"
G + 1	DEFROST COMMAND	G + 1 + D = START "L" TO ABORT
G + 2	TEMPERATURE DISPLAY	G + 2 + F = FAHRENHEIT G + 2 + C = CELSIUS "L" TO ABORT
G + 3	"CUT IN" TEMPERATURE (TURN ON)	"1" TO ENTER PLUS (+) - "0" TO ENTER MINUS (-) ENTER TEMPERATURE NUMBER
G + 4	"CUT-OUT" TEMPERATURE (TURN OFF)	"1" TO ENTER PLUS (+) - "0" TO ENTER MINUS (-) ENTER TEMPERATURE NUMBER
G + 5	DEFROST DURATION	"DF TIME XX" 10 MINUTES RECOMMENDED
G + 6	DEFROST START TIMES (4 AVAILABLE)	"DEFRI 00:00 (TIME) + "L" TO SAVE - CONTINUE TO SET NEXT THREE BY THE SAME METHOD FACTORY RECOMMENDATION - ALL TIMES SET TO "00.00"

S
E
R
V
I
C
E

M
O
D
E

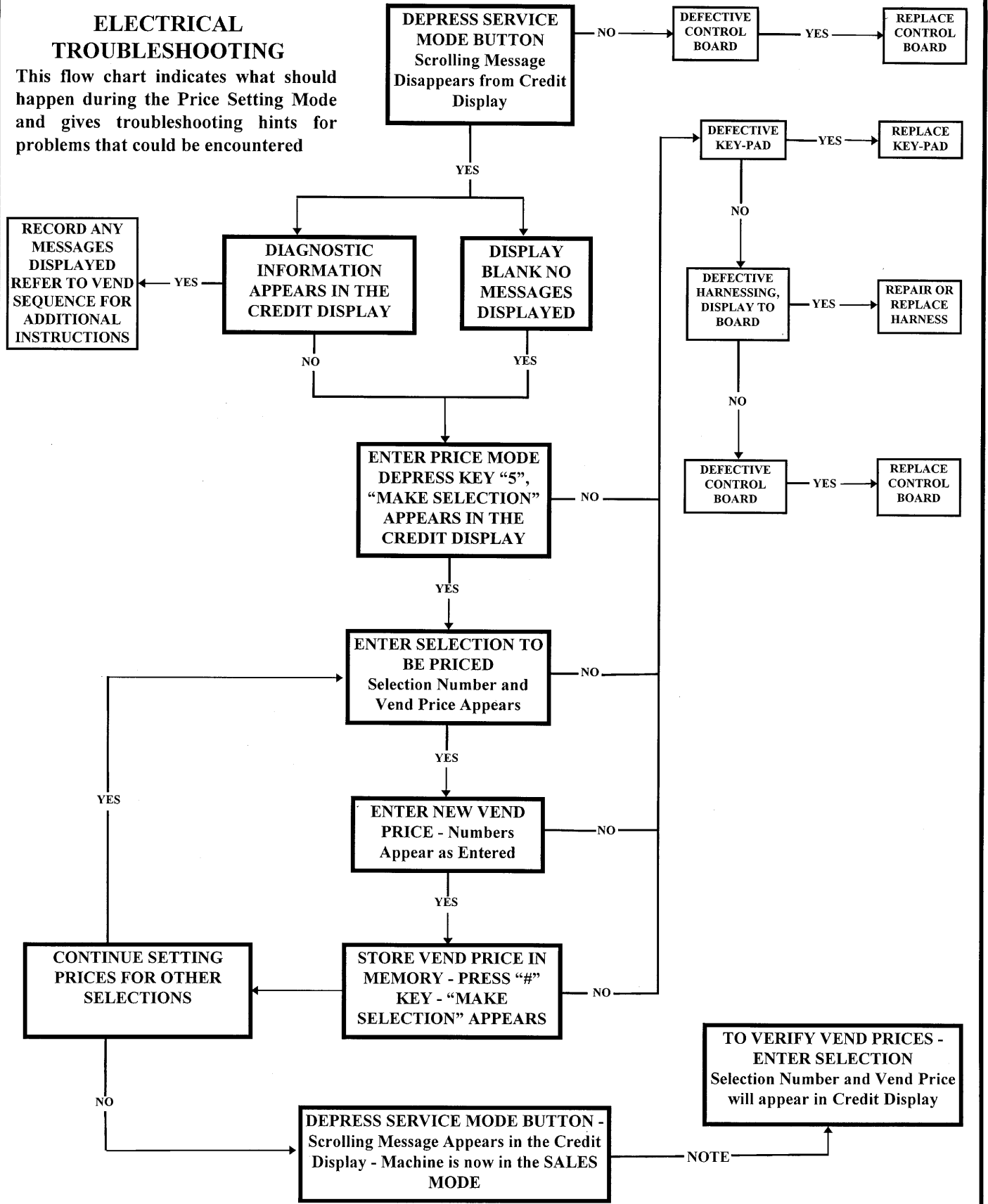
ELECTRICAL TROUBLESHOOTING:

This flow chart indicates what should happen when power is applied to the vendor.



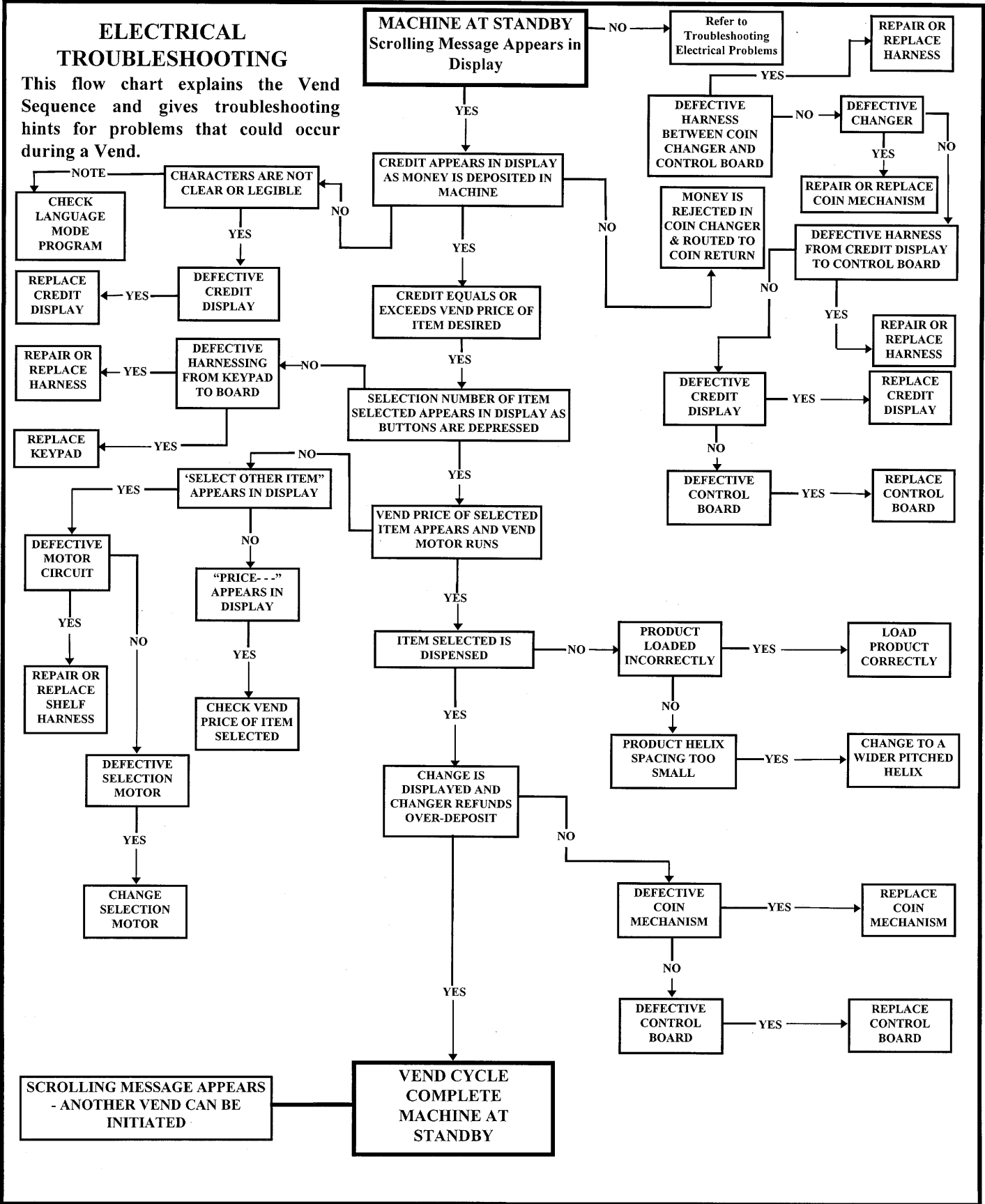
ELECTRICAL TROUBLESHOOTING

This flow chart indicates what should happen during the Price Setting Mode and gives troubleshooting hints for problems that could be encountered



ELECTRICAL TROUBLESHOOTING

This flow chart explains the Vend Sequence and gives troubleshooting hints for problems that could occur during a Vend.



PARTS ORDERING PROCEDURE:

When ordering parts, include the following information:

1. Shipping Address.
2. Address where the invoice should be sent.
3. The number of parts required.
4. Always refer to the pertinent parts and/or parts manual for the correct part number and description of a specific part.

a.) If you do not have the right parts manual at the time you order, contact:

Selectivend, Inc.

P.O. Box 488

165 North 10th Street

Waukee, Iowa 50263-0488

They will provide a copy for you. Do not hold the order pending receipt of the parts manual; use the most accurate description you can (and the model number and serial number of the machine); include the name of the assembly in which the part is used, and if practical, a sample part. Furnish any information which will enable our Parts

Department to pinpoint the exact part needed.

- b.) When "RIGHT" and "LEFT" are used in connection with the name of the part, it is taken to mean that the person is facing the machine with the door open.
5. Always include the model number and serial number of the machines for which the parts are needed on your order.
6. List any special shipping instructions.
 - a.) Always note on the order if you require air or air special, truck, parcel post, or rail. If a specific carrier is desired, note it on the order.
7. Sign the order and note the date entered on the order.
8. When a purchase order number is used, be sure that it is legible and visible.

MAIL YOUR ORDER TO:

SELECTIVEND, INC.

P.O. BOX 488

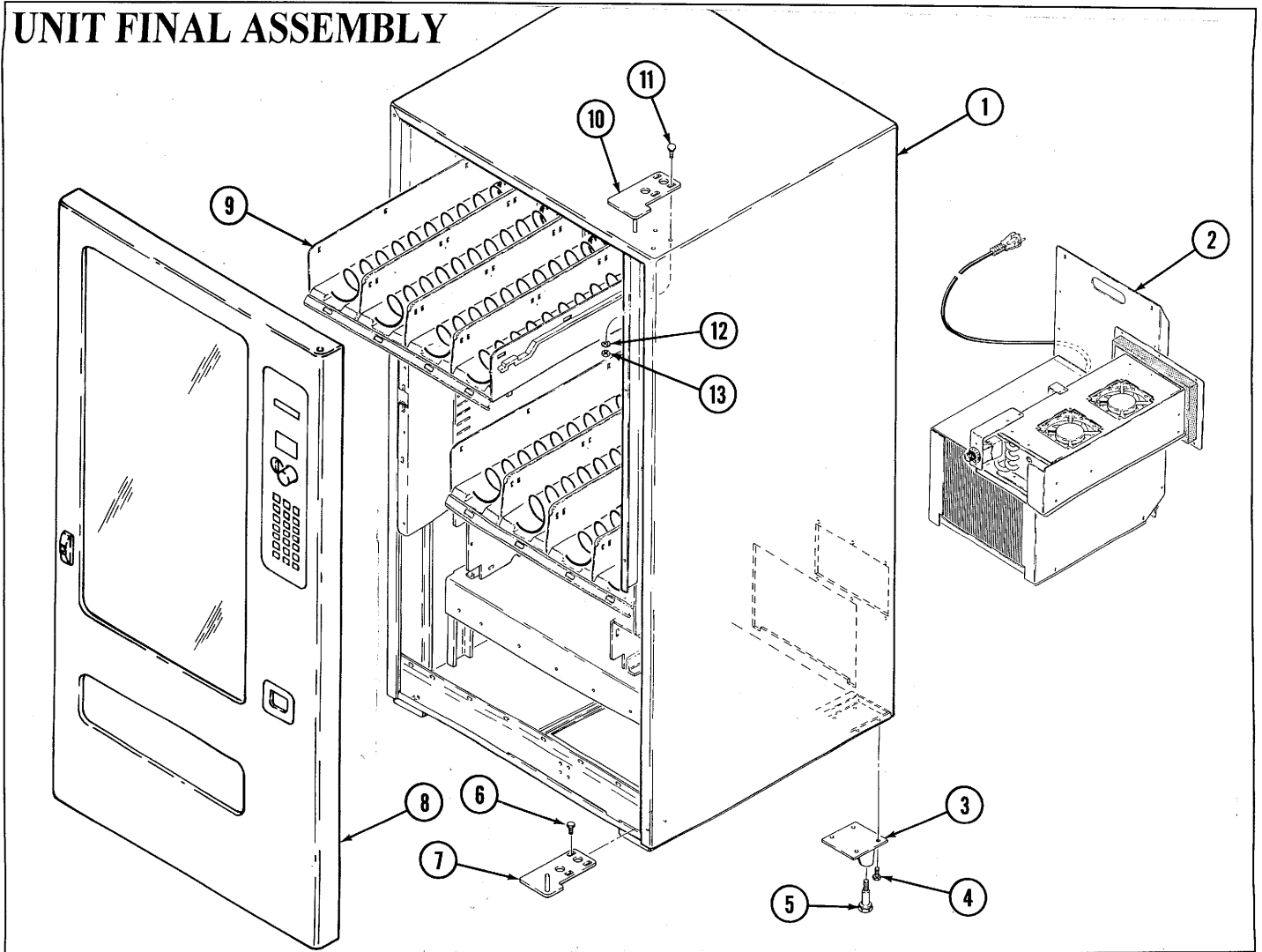
165 NORTH 10TH STREET

WAUKEE, IOWA 50263-0488

All orders are carefully packed and inspected prior to shipment. Damage incurred during shipment should be reported at once and a claim filed with the terminating carrier.

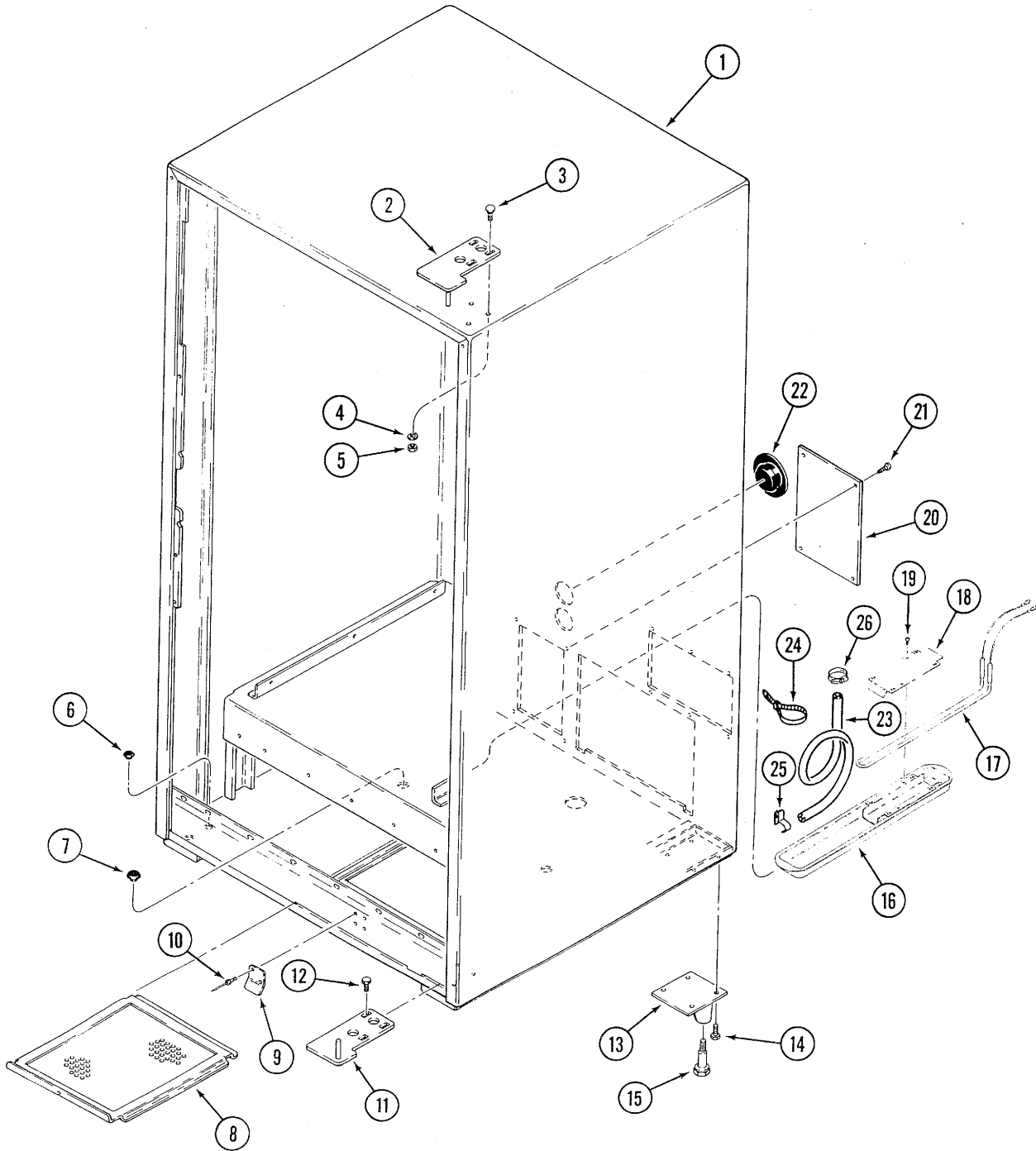
PARTS LISTING

UNIT FINAL ASSEMBLY



ITEM	PART NO.	DESCRIPTION	115V	230V	AMB	A/C	3-W	4-W	5-W
1		CABINET ASS'Y (See Pages 28 Thru 33)							
2	212327-001	REFER - 1/4 HP - R134a - 230V		X		X	1	1	1
	1212327	REFER - 1/4 HP - R134a - 115 V	X			X	1	1	1
	4205531-001	BACK CABINET COVER (Not Shown)	X	X	X		1	1	1
	4205530-001	BOTTOM BACK COVER (Not Shown)	X	X	X		1	1	1
	4202512-002	POWER CORD	X		X		1	1	1
3	1131275-001	LEG WELD ASS'Y	X	X	X	X	4	4	4
4	8801388	SCREW - #5/16-18 X 3/4	X	X	X	X	4	4	4
5	8363374	LEG LEVELER	X	X	X	X	4	4	4
6	8801388	SCREW - #5/16-18 X 3/4	X	X	X	X	1	1	1
7	1212060-005	HINGE STAKE - LOWER - CHAR	X	X	X	X	1	1	1
8		DOOR ASS'Y (See Pages 36 to 39)	X	X	X	X			
9		DRAWER CONFIG (See Pages 44 to 47)	X	X	X	X			
10	1212060-006	UPPER STAKE - UPPER - CHAR	X	X	X	X	1	1	1
11	4050099	CARRIAGE BOLT - #5/16 X 3.4	X	X	X	X	1	1	1
12	7186148-000	LOCK WASHER - #5/16	X	X	X	X	3	3	3
13	4050066	HEX NUT - #5/16-18	X	X	X	X	3	3	3
14	4203968	AIR SCOOP(OUTDOOR OPTION) Not shown	X	X		X	1	1	1

CABINET ASSEMBLY



CABINET ASSEMBLY

ITEM	PART NO.	DESCRIPTION	115V	230V	AMB	A/C	3-W	4-W	5-W
1	1212363-003	CABINET WELD - CHARCOAL	X	X	X	X	1		
	1212363-004	CABINET WELD - CHARCOAL	X	X	X	X		1	
	1212363-005	CABINET WELD - CHARCOAL	X	X	X	X			1
2	1212060-006	HINGE STAKE - UPPER - CHARCOAL	X	X	X	X	1	1	1
3	4050099	CARRIAGE BOLT - #5/16-18 X 3/4	X	X	X	X	3	3	3
4	7186148-000	LOCK WASHER - 5/16	X	X	X	X	3	3	3
5	4050066	HEX NUT - #5/16-18	X	X	X	X	3	3	3
6	7259135-003	PLUG - PLASTIC - 3/4"	X	X	X	X	8	8	8
7	7250135-002	PLUG - PLASTIC - 1"	X	X	X	X	2	2	2
8	1212329	SCREEN WELD - CHARCOAL	X	X	X	X	1	1	1
9	4205542	SPRING	X	X	X	X	1	1	1
10	4050663	POP RIVET	X	X	X	X	2	2	2
11	1212060-005	HINGE STAKE - LOWER - CHARCOAL	X	X	X	X	1	1	1
12	8801388	SCREW - #5/16-18 X 3/4	X	X	X	X	3	3	3
13	1131275-001	LEG WELD ASS'Y	X	X	X	X	4	4	4
14	8801388	SCREW #5/16-18 X 3/4	X	X	X	X	16	16	16
15	8363374	LEG LEVELER	X	X	X	X	4	4	4
16	1212280	DRAIN PAN WELD	X	X		X	1	1	1
17	4203968	HEATING ELEMENT - 230 VOLT		X		X	1	1	1
	4203968-001	HEATING ELEMENT - 115 VOLT	X			X	1	1	1
18	4202901-001	HEATER RETAINER	X	X		X	1	1	1
19	4050423	SCREW - #8-18 X 3/8	X	X		X	1	1	1
20	4205043	INSPECTION PLATE	X	X		X	1	1	1
	4205531-001	BACK CABINET COVER (Not Shown)	X	X	X		1	1	1
	4205530-001	BOTTOM BACK COVER (Not Shown)	X	X	X		1	1	1
21	4050423	SCREW #8-18 X 3/8	X	X	X	X	A/R	A/R	A/5
22	7250135-007	HOLE PLUG - 2 1/4 DIA	X	X		X	2	2	2
23	4205410-006	DRAIN HOSE (3 1/2 FT)	X	X		X	1	1	1
24	4033712	CABLE TIE - 7 3/8	X	X		X	1	1	1
25	7200341-000	TUBE CLIP	X	X		X	1	1	1
26	4205534	HOSE CLAMP	X	X		X	1	1	1
	4206643	RELAY (NOT SHOWN)	X	X		X	1	1	1
	4206766	BRACKET (NOT SHOWN)	X	X		X	1	1	1
	4206765	RELAY HARNESS (NOT SHOWN)	X	X		X	1	1	1
	4206782	TEMPERATURE SENSOR	X	X		X	1	1	1

AMB = AMBIENT - NON AIR CONDITIONED

A/C = AIR CONDITIONED

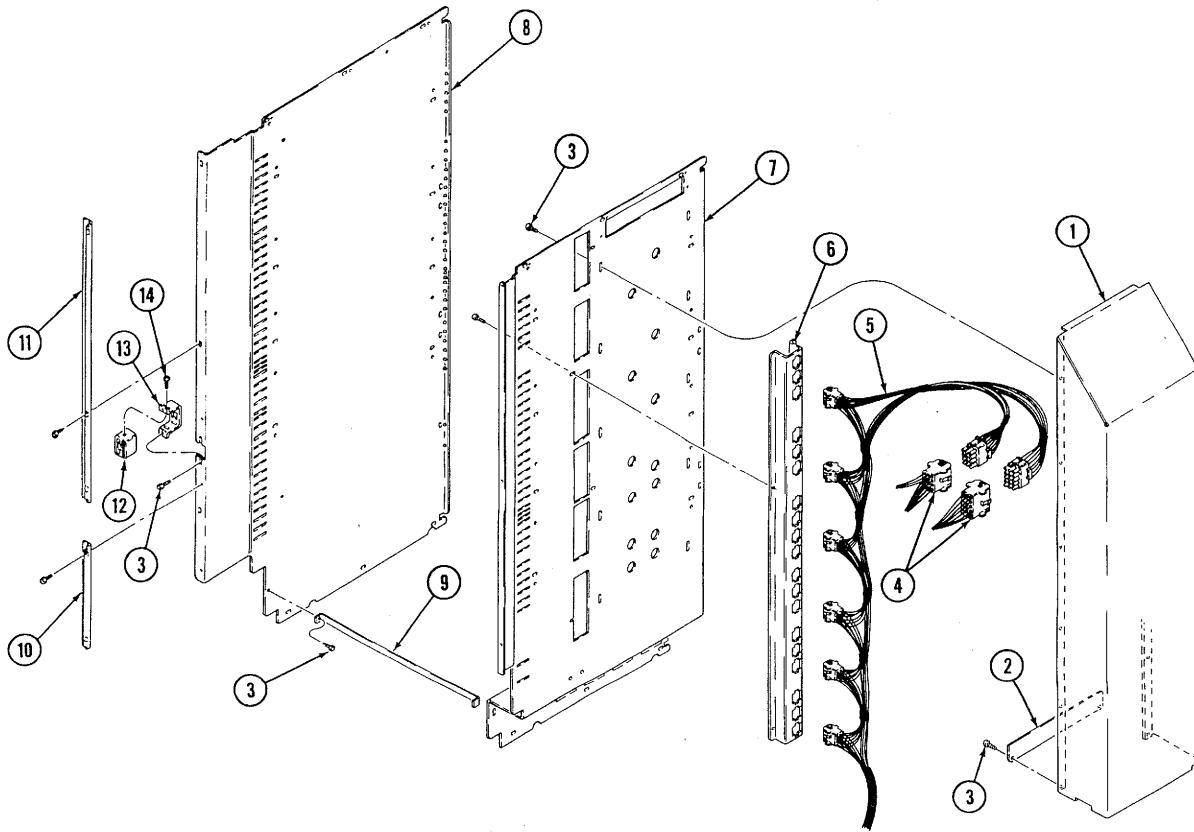
3-W = 3 WIDE UNITS

4-W = 4 WIDE UNITS

5-W = 5 WIDE UNITS

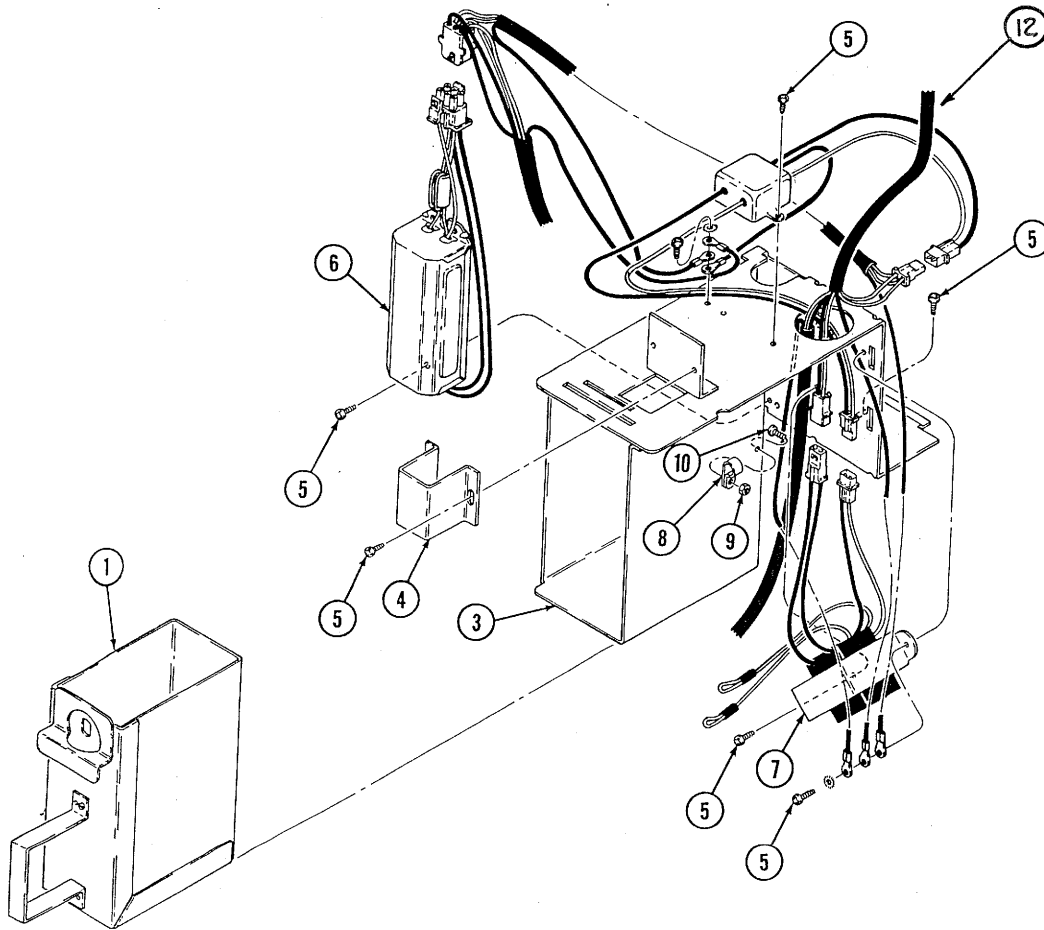
A/R = AS REQUIRED

CABINET ASSEMBLY CONT.



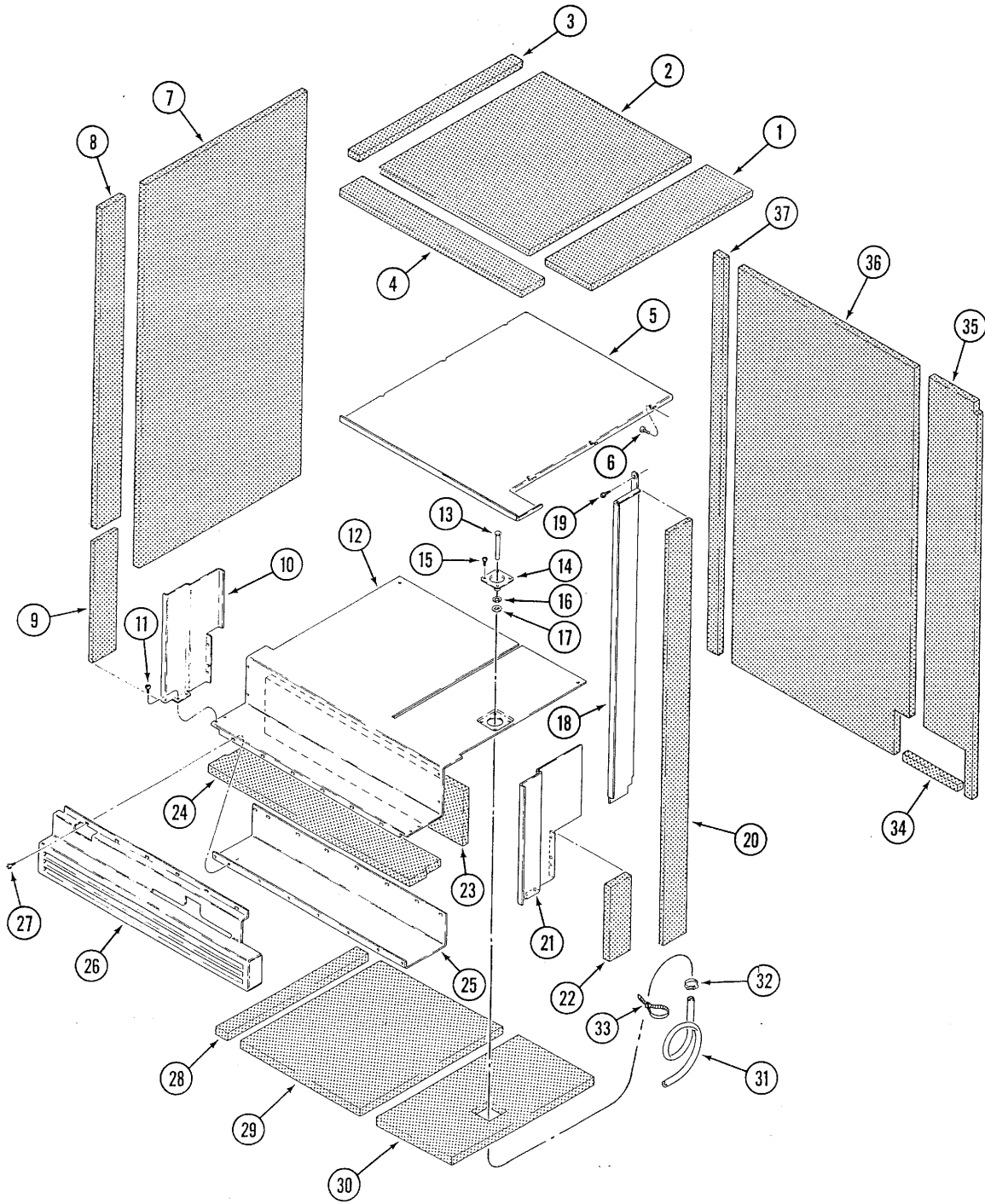
ITEM	PART NO.	DESCRIPTION	115V	230V	AMB	A/C	3-W	4-W	5-W
1	4203997	AIRDUCT	X	X		X	1	1	1
2	4203977	DUCT STRAP	X	X		X	1	1	1
3	4050423	#8-18 X 3/8 PHIL SCREW	X	X		X	A/R	A/R	A/R
4	4205091-001	CONTROL HARNESS	X	X	X	X	1	1	1
5	4205090	8 PLUG MAIN HARNESS	X	X	X	X	1	1	1
6	4203143	TRAY RECEPTACLE	X	X	X	X	1	1	1
7	4203999	RIGHT SIDE PANEL	X	X	X	X	1	1	1
8	1212226	LEFT PANEL WELD	X	X	X	X	1		
9	4205118	ANTI STOR BRACKET	X	X	X	X	1		
	4205118-001	ANTI STOR BRACKET	X	X	X	X		1	
	4205118-002	ANTI STOR BRACKET	X	X	X	X			1
10	4203645	ANTI-CHEAT	X	X	X	X	1	1	1
11	4203645-001	ANTI-CHEAT	X	X	X	X	1	1	1
12	4203634	SPLIT NUT ASS'Y	X	X	X	X	1	1	1
13	4203255	NUT MOUNT BRACKET	X	X	X	X	1	1	1
14	8800638	#10-16 X 3/8 PHIL HEAD SCREW	X	X	X	X	2	2	2

CABINET ASSEMBLY CONT.



ITEM	PART NO.	DESCRIPTION	115V	230V	AMB	A/C	3-W	4-W	5-W
	1212052-002	COIN BOX HOLDER ASS'Y	X	X	X	X	1	1	1
1	1211448	COIN BOX RIVET ASS'Y	X	X	X	X	1	1	1
2	4060318	CASH BOX LOCK & KEYS	X	X	X	X	1	1	1
3	1211449	BOX MOUNT WELD	X	X	X	X	1	1	1
4	4203199	BOTTOM BOX CHUTE	X	X	X	X	1	1	1
5	4050423	#8-18 X 3/8 PHIL SCREW	X	X	X	X	A/R	A/R	A/R
6	4203625-001	BALLAST ASS'Y - 230 VOLT		X	X	X	1	1	1
	4203625	BALLAST ASS'Y - 115 VOLT	X		X	X	1	1	1
7	4203134	TRANSFORMER		X	X	X	1	1	1
	1210952	TRANSFORMER ASS'Y	X		X	X	1	1	1
8	8324099-6	CLAMP - 3/8 X 1/2	X	X	X	X	1	1	1
9	4050513	#8-32 TWIN WHIZ LOCK NUT	X	X	X	X	1	1	1
10	4050239	#8-32 X 3/8 PHIL SCREW	X	X	X	X	1	1	1
11	4050585	#8 EXTERNAL TOOTH LW	X	X	X	X	A/R	A/R	A/R
12	4203993-003	HARNESS	X	X	X	X	1	1	1

CABINET INSULATION



ITEM	PART NO.	DESCRIPTION	115V	230V	AMB	A/C	3-W	4-W	5-W
1	4205069-004	INSULATION TOP RH - BLK	X	X		X	1	1	1
2	4205069	INSULATION TOP CENTER - BLK	X	X		X	1		
	4205069-001	INSULATION TOP CENTER - BLK	X	X		X		1	
	4205069-002	INSULATION TOP CENTER - BLK	X	X		X			1
3	4205069-003	INSULATION TOP LH - BLK	X	X		X	1	1	1
4	4205070	INSULATION TOP FRONT - 3 W	X	X		X	1		
	4205070-001	INSULATION TOP FRONT - 4 W	X	X		X		1	
	4205070-002	INSULATION TOP FRONT - 5 W	X	X		X			1
5	4203998-003	TOP FOAM COVER - 3 W	X	X		X	1		
	4203998-004	TOP FOAM COVER - 4 W	X	X		X		1	
	4203998-005	TOP FOAM COVER - 5 W	X	X		X			16
6	4050423	SCREW - #8-18 X 3/8	X	X		X	A/R	A/R	A/R
7	4205074	INSULATION SIDE	X	X		X	2	2	2
8	4205070-008	INSULATION SIDE FRONT - LEFT	X	X		X	1	1	1
9	4205100	INSULATION SIDE - BOTTOM	X	X		X	1	1	1
10	4205302	LOWER LH COVER	X	X		X	1	1	1
11	4050423	SCREW - #8-18 X 3/8	X	X		X	A/R	A/R	A/R
12	4203979-003	COVER - BOTTOM FOAM - 3 W	X	X		X	1		
	4203979-004	COVER - BOTTOM FOAM - 4 W	X	X		X		1	
	4203979-005	COVER - BOTTOM FOAM - 5 W							1
13	7100042-000	DRAIN TUBE	X	X		X	1	1	1
14	4202760	LOCK FUNNEL - INNER DOOR	X	X		X	1	1	1
15	4050423	SCREW - #8-18 X 3/8	X	X		X	4	4	4
16	4050608	1/2" FLAT WASHER	X	X		X	1	1	1
17	4202284	PUSH NUT - .500 DIA	X	X		X	1	1	1
18	4205300	UPPER RH COVER	X	X		X	1	1	1
19	4050423	SCREW - #8-18 X 3/8	X	X		X	A/R	A/R	A/R
20	4205070-003	SIDE FRONT	X	X		X	1	1	1
21	4205301	LOWER RH COVER	X	X		X	1	1	1
22	4205075	INSULATION - SIDE - LWR FRONT	X	X		X	2	2	2
23	4205073	INSULATION BOTTOM FRONT	X	X		X	1		
	4205073-001	INSULATION BOTTOM FRONT	X	X		X		1	
	4205073-002	INSULATION BOTTOM FRONT	X	X		X			1
24	4205072	INSULATION BOTTOM FRONT	X	X		X	1		
	4205072-001	INSULATION BOTTOM FRONT	X	X		X		1	
	4205072-002	INSULATION BOTTOM FRONT	X	X		X			1
25	4203980-003	BOTTOM FOAM RETAINER	X	X		X	1		
	4203980-004	BOTTOM FOAM RETAINER	X	X		X		1	
	4203980-005	BOTTOM FOAM RETAINER	X	X		X			1
26	4205465-003	KICK PANEL - 3 WIDE	X	X	X	X	1		
	4205465-004	KICK PANEL - 4 WIDE	X	X	X	X		1	
	4205465-005	KICK PANEL - 5 WIDE	X	X	X	X			1
27	4205423	SCREW - #8-18 X 3/8	X	X	X	X	A/R	A/R	A/R
28	4205071-003	INSULATION BOTTOM - LH	X	X		X	1	1	1
29	4205071	INSULATION - BOTTOM - FRONT	X	X		X	1		
	4205071-001	INSULATION - BOTTOM FRONT	X	X		X		1	
	4205071-002	INSULATION - BOTTOM FRONT	X	X		X			1
30	4205071-004	INSULATION - BOTTOM - LH	X	X		X	1	1	1
31	4025410-006	DRAIN HOSE - (3 1/2 FT.)	X	X		X	1	1	1
32	4205534	HOSE CLAMP	X	X		X	1	1	1
33	4033712	CABLE TIE	X	X		X	1	1	1
34	4205076	INSULATION - BOTTOM EVAPORATOR	X	X		X	1	1	1
35	4205068-004	INSULATION - BACK	X	X		X	1	1	1
36	4205068	INSULATION- BACK - CENTER	X	X		X	1		
	4205068-001	INSULATION - BACK - CENTER	X	X		X		1	
	4205068-002	INSULATION - BACK - CENTER	X	X		X			1
37	4205068-003	INSULATION BACK	X	X		X	1	1	1

AMB = AMBIENT - NON AIR CONDITIONED

A/C = AIR CONDITIONED

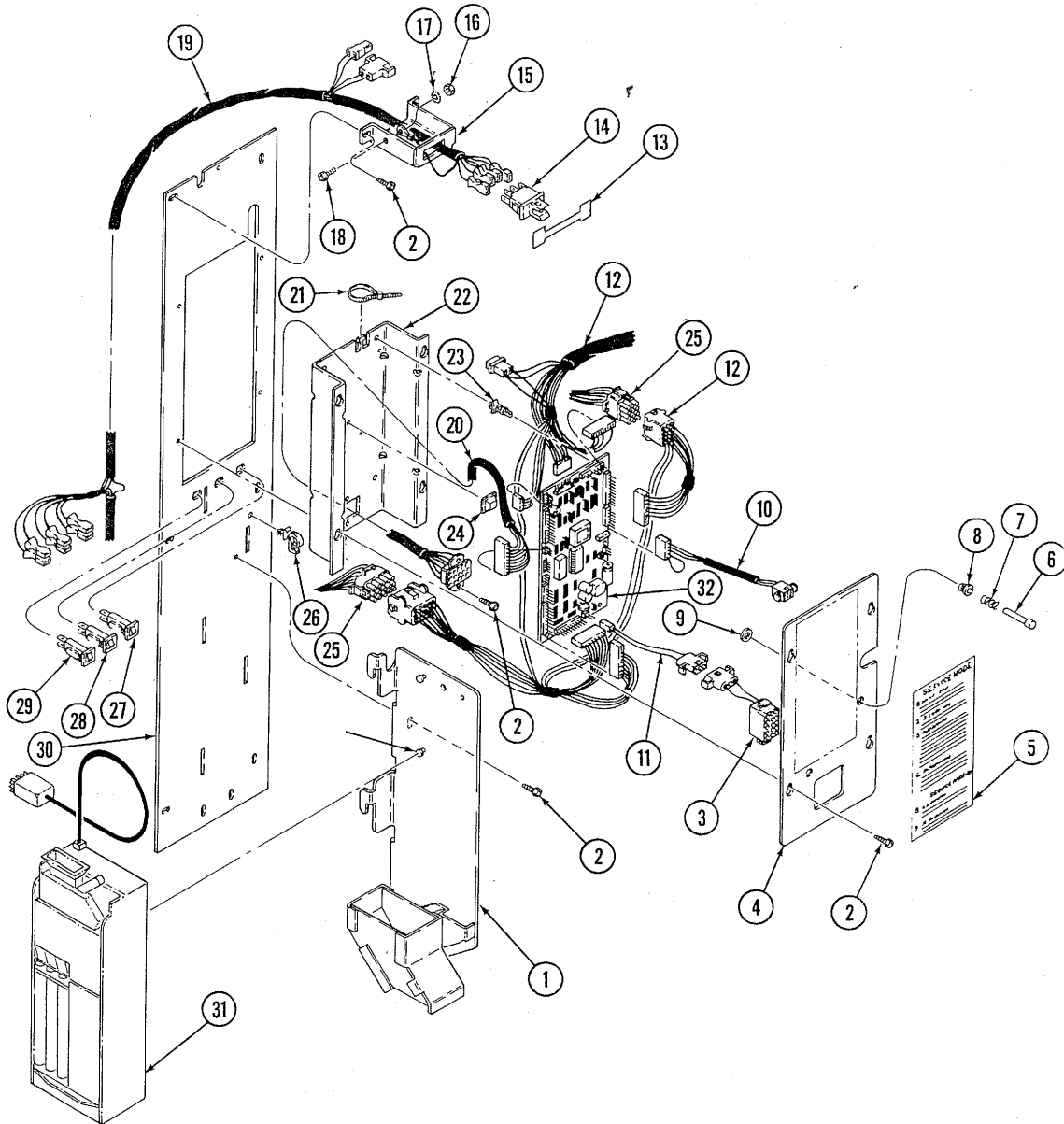
3-W = 3 WIDE UNITS

4-W = 4 WIDE UNITS

5-W = 5 WIDE UNITS

A/R = AS REQUIRED

CONTROL PANEL ASSEMBLY



ITEM	PART NO.	DESCRIPTION	115V	230V	AMB	A/C	3-W	4-W	5-W
	1212045	CONTROL PANEL ASSY	X			X	1	1	1
	1212045-001	CONTROL PANEL ASSY	X		X		1	1	1
	1212045-002	CONTROL PANEL ASSY - INT		X		X	1	1	1
	1212045-003	CONTROL PANEL ASSY - INT		X	X		1	1	1
1	1212104	COINAGE WELD	X		X	X	1	1	1
1	1212104-002	COINAGE WELD - INT		X	X	X	1	1	1
2	4050423	SCREW - #8-18 X 3/8	X	X	X	X	A/R	A/R	A/R
3	4200709	MS 1600 POWER HARNESS	X	X	X	X	A/R	A/R	A/R
4	4205314	CONTROLLER COVER - INT	X	X	X	X	1	1	1
4	4293145	CONTROLLER COVER	X			X	1	1	1
4	4203145-002	CONTROLLER COVER	X		X		1	1	1
5	4203870	SERVICE MODE LABEL	X	X	X	X	1	1	1
6	4203144	MODE BUTTON	X	X	X	X	1	1	1
7	4021017	SPRING	X	X	X	X	1	1	1
8	4203181	1/4 I.D. SNAP BUSHING	X	X	X	X	1	1	1
9	4203477	1/4 NUT	X	X	X	X	1	1	1
10	4200705	MS 1600 DATA HARNESS (MARS)	X	X	X	X	A/R	A/R	A/R
11		NOT REQUIRED							
12	4205091-001	CONTROLLER HARNESS	X	X	X	X	1	1	1
13	4203640	INTERLOCK CHEAT			X	X	1	1	1
13		(NOT REQUIRED)	X	X					
14	4203639	DOOR INTERLOCK SWITCH		X	X	X	1	1	1
14	4034309	DOOR INTERLOCK SWITCH	X			X	1	1	1
14	4203892	ROCKER SWITCH	X		X		1	1	1
15	4205108	DOOR SWITCH MOUNT	X	X		X	1	1	1
15	4203591	DOOR SWITCH MOUNT		X	X		1	1	1
15		(NOT REQUIRED)	X		X				
16	4050513	#8-32 TWIN WHIZ NUT		X	X	X	1	1	1
16	4050513	#8-32 TWIN WHIZ NUT	X			X	1	1	1
17	4050585	#8 EXTERNAL TOOTH WASHER		X	X	X	1	1	1
17	4050585	#8 EXTERNAL TOOTH WASHER	X			X	1	1	1
17		(NOT REQUIRED)	X		X				
18	4050240	#8-32 X 3/8 PHIL SCREW		X	X	X	1	1	1
18	4050240	#8-32 X 3/8 PHIL SCREW	X			X	1	1	1
18		(NOT REQUIRED)	X		X				
19	4203993-003	POWER HARNESS - INT	X	X	X	X	1	1	1
20	4203992	COIN MECH HARNESS (VERSATILE)	X	X	X	X	A/R	A/R	A/R
21	4203509	CABLE TIE	X	X	X	X	1	1	1
22	4203137	CONTROLLER MOUNT	X	X	X	X	1	1	1
23	42025723	CONTROLLER STAND-OFF	X	X	X	X	4	4	4
24	4200238	SELF ADHESIVE FEET			X	X	1	1	1
25	4205090	8 PLUG MAIN HARNESS	X	X	X	X	1	1	1
26	4203468	SNAP-IN CLIP	X	X	X	X	1	1	1
27	4203467-005	5 AMP CIRCUIT BREAKER	X	X	X	X	1	1	1
28	4203467-003	3 AMP CIRCUIT BREAKER	X	X	X	X	1	1	1
29	4203467-001	(NOT REQUIRED)		X	X	X			
29	4203467-001	1 AMP CIRCUIT BREAKER	X		X	X	1	1	1
30	4203136-008	CONTROL PANEL - INT		X		X	1	1	1
30	4203136-006	CONTROL PANEL - INT		X	X		1	1	1
30	4203136-002	CONTROL PANEL	X		X		1	1	1
30	4203136-008	CONTROL PANEL	X			X	1	1	1
31		EXECUTIVE COIN MECHANISM - MARS	X	X	X	X	A/R	A/R	A/R
31	4200419	9302 "L PLUS" - COINCO CHANGER	X	X	X	X	A/R	A/R	A/R
31	4200732	TRC-6010 MARS CHANGER	X	X	X	X	A/R	A/R	A/R
32	4203864-002	CONTROLLER - L PLUS WITH DEX		X	X	X	1	1	1
32	4203864-004	MDB CONTROLLER	X	X	X	X	1	1	1

AMB = AMBIENT - NON AIR CONDITIONED

A/C = AIR CONDITIONED

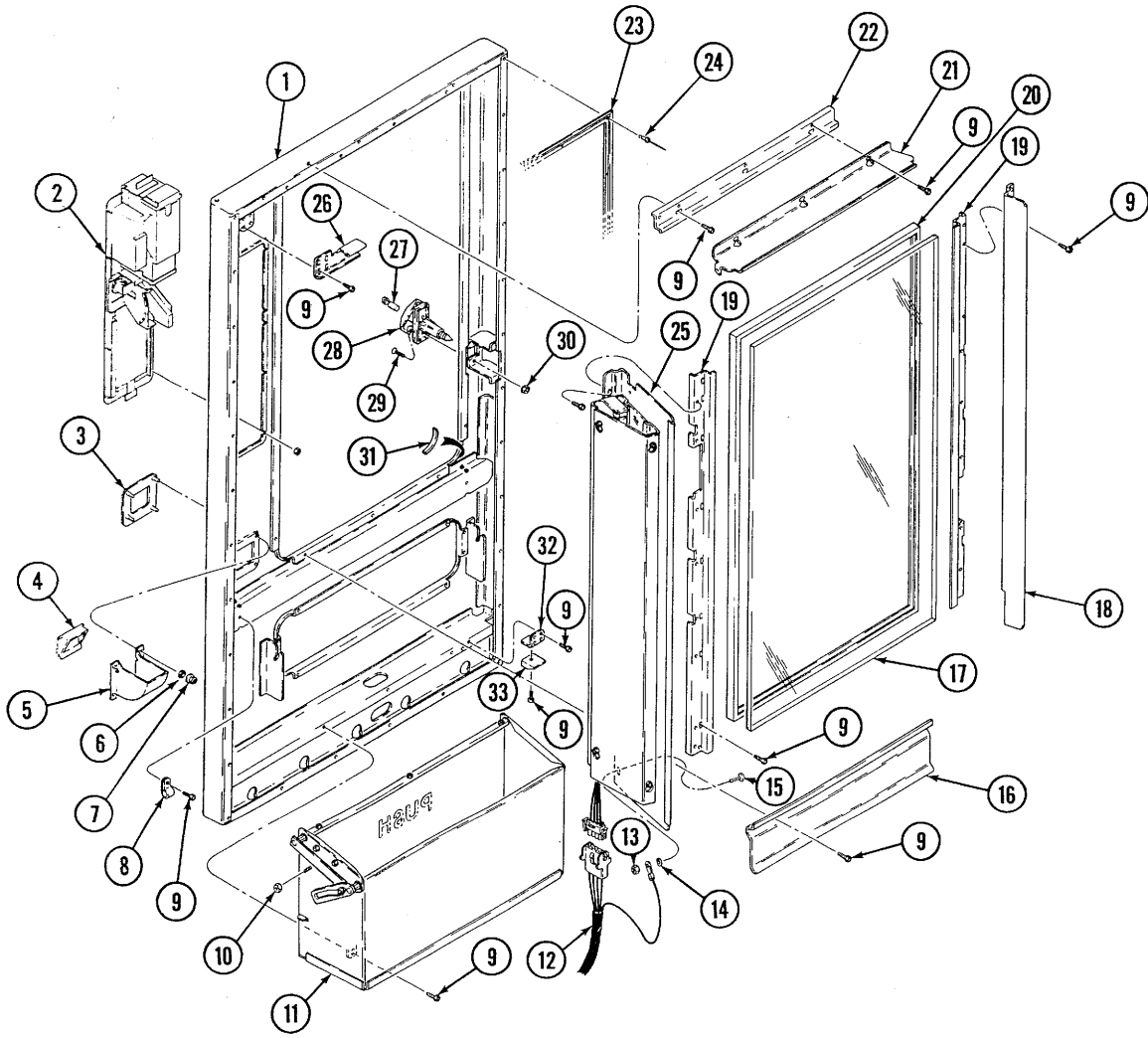
3-W = 3 WIDE UNITS

4-W = 4 WIDE UNITS

5-W = 5 WIDE UNITS

A/R = AS REQUIRED

DOOR ASSEMBLY



ITEM	PART NO.	DESCRIPTION	115V	230V	AMB	A/C	3-W	4-W	5-W
	1212610-003	COMPLETE DOOR ASSEMBLY	X	X	X		1		
	1212610-004	COMPLETE DOOR ASSEMBLY	X	X	X			1	
	1212610-005	COMPLETE DOOR ASSEMBLY	X	X	X				1
	1212216-003	COMPLETE DOOR ASSEMBLY	X	X		X	1		
	1212216-004	COMPLETE DOOR ASSEMBLY	X	X		X		1	
	1212216-005	COMPLETE DOOR ASSEMBLY	X	X		X			1
1	1212026-005	DOOR WELD	X	X	X		1		
1	1212026-006	DOOR WELD	X	X	X			1	
1	1212026-015	DOOR WELD	X	X	X				1
1	1212026-012	DOOR WELD	X	X		X	1		
1	1212026-013	DOOR WELD	X	X		X		1	
1	1212026-011	DOOR WELD	X	X		X			1
2	1212218-001	SELECTOR PANEL ASSY (WITH VAL)	X	X	X	X	1	1	1
2	1212218	SELECTOR PANEL ASSY (NO VAL)	X	X	X	X	1	1	1
3	4203209	COIN CUP BEZEL (SPECIFY COLOR)	X	X	X	X	1	1	1
4	4203208	COIN CUP DOOR (SPECIFY COLOR)	X	X	X	X	1	1	1
5	4203207	COIN CUP (SPECIFY COLOR)	X	X	X	X	1	1	1
6	4203477	1/4" NUT	X	X	X	X	4	4	4
7	4050747	STAMPED HEX NUT	X	X	X	X	4	4	4
8	4060116	PLASTIC WIRE CLAMP - 3/8	X	X	X	X	1	1	1
9	4050423	#8-18 X 3/8 PHIL SCREW	X	X	X	X	A/R	A/R	A/R
10									
11	1212217-003	DELIVERY ASSY - 3 WIDE (SEE PAGE #42)	X	X	X	X	1		
11	1212217-004	DELIVERY ASSY - 4 WIDE (SEE PAGE #42)	X	X	X	X		1	
11	1212217-005	DELIVERY ASSY - 5 WIDE (SEE PAGE #42)	X	X	X	X			1
12	4203993-003	POWER HARNESS	X	X	X	X	1	1	1
13	4050513	#8-32 TWIN WHIZ NUT	X	X	X	X	A/R	A/R	A/R
14	4050585	#8 EXTERNAL TOOTH LOCKWASHER	X	X	X	X	A/R	A/R	A/R
15	4050239	#8-32 X 3/8 PHIL SCREW	X	X	X	X	A/R	A/R	A/R
16	4203484-007	PRODUCT DEFLECTOR	X	X	X		1		
16	4203484-008	PRODUCT DEFLECTOR	X	X	X			1	
16	42934740995	PRODUCT DEFLECTOR	X	X	X				1
16	4203958-003	PRODUCT DEFLECTOR	X	X		X	1		
16	4203958-004	PRODUCT DEFLECTOR	X	X		X		1	
16	4203958-005	PRODUCT DEFLECTOR	X	X		X			1
17	4203478-006	DISPLAY WINDOW	X	X	X		1		
17	4203478-007	DISPLAY WINDOW	X	X	X			1	
17	4203478-008	DISPLAY WINDOW	X	X	X				1

AMB = AMBIENT - NON AIR CONDITIONED

A/C = AIR CONDITIONED

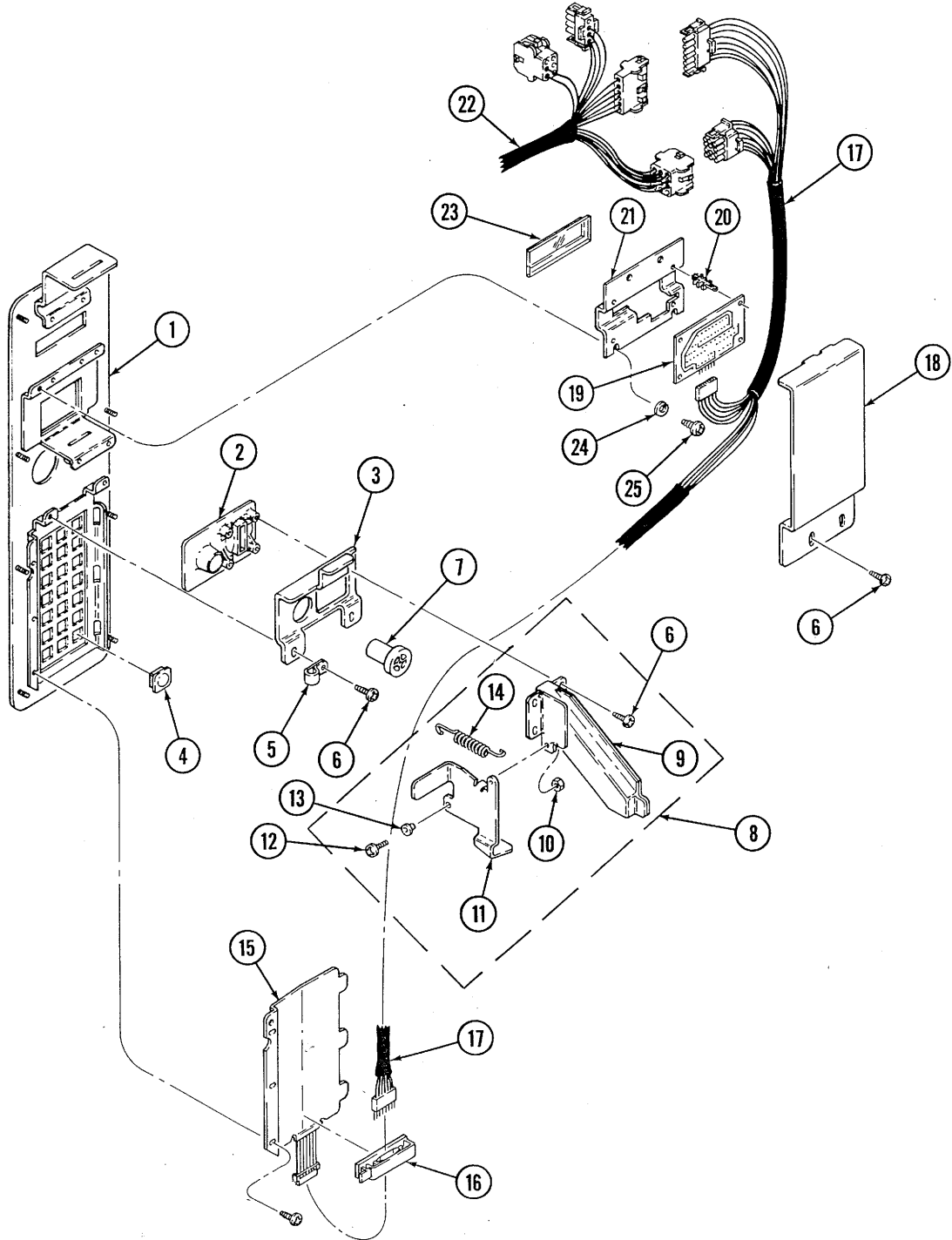
3-W = 3 WIDE UNITS

4-W = 4 WIDE UNITS

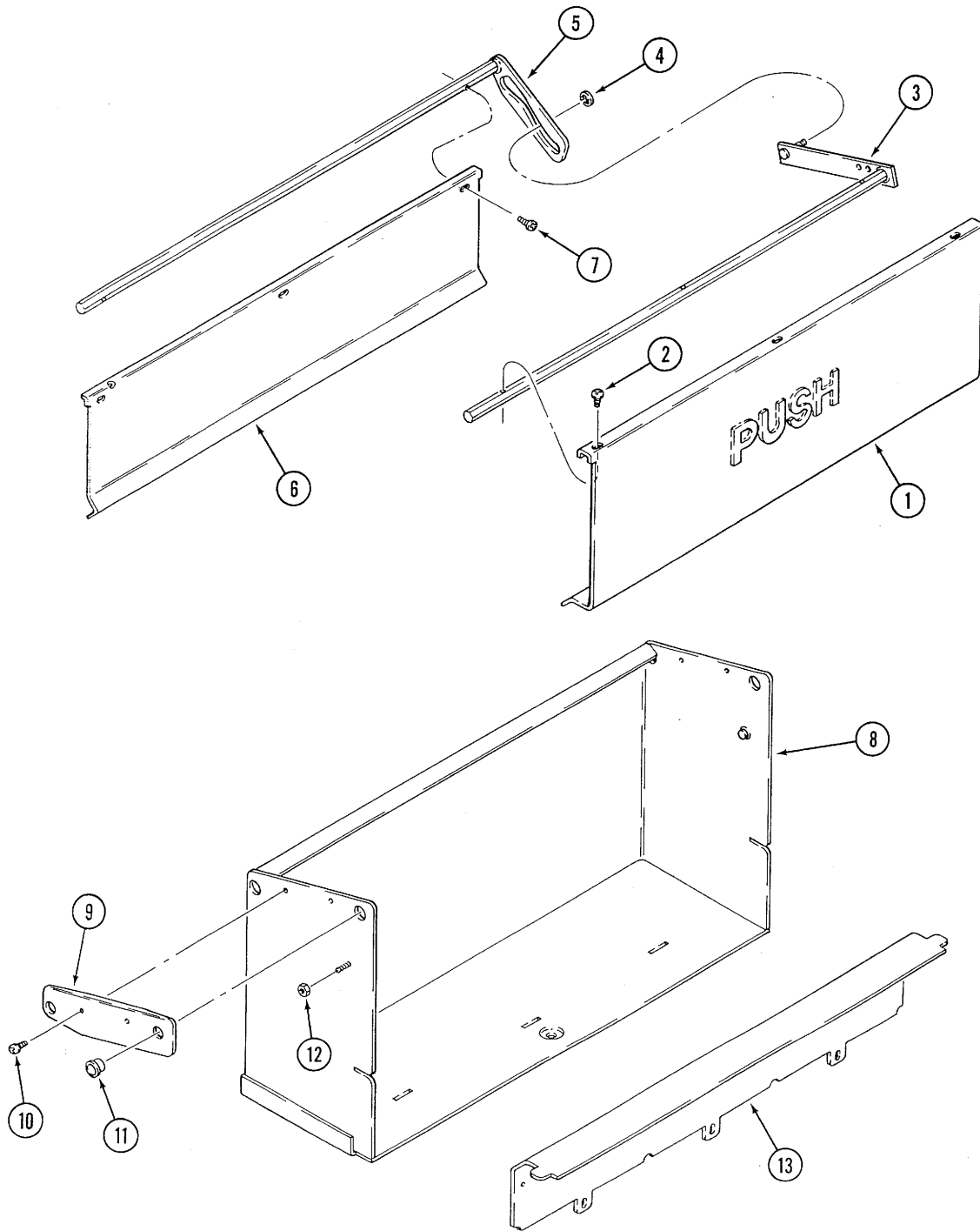
5-W = 5 WIDE UNITS

A/R = AS REQUIRED

SELECTOR PANEL ASSEMBLY



DELIVERY ASSEMBLY



ITEM	PART NO.	DESCRIPTION	115V	230V	AM B	A/ C	3- W	4- W	5- W
	1212217-003	DELIVERY ASSEMBLY	X	X	X	X	1		
	1212217-004	DELIVERY ASSEMBLY	X	X	X	X		1	
	1212217-005	DELIVERY ASSEMBLY	X	X	X	X			1
1	1212041-003	DELIVERY DOOR WELD	X	X	X	X	1		
1	1212041-004	DELIVERY DOOR WELD	X	X	X	X		1	
1	1212041-005	DELIVERY DOOR WELD	X	X	X	X			1
2	4050239	SCREW - #8-32 X 3/8	X	X	X	X	3	3	3
3	1212201-003	FOLLOWER WELD	X	X	X	X	1		
3	1212201-004	FOLLOWER WELD	X	X	X	X		1	
3	1212201-005	FOLLOWER WELD	X	X	X	X			1
4	8801080	RETAINING RING	X	X	X	X	1	1	1
5	1212039-003	CAM/ROD WELD	X	X	X	X	1		
5	1212039-004	CAM/ROD WELD	X	X	X	X		1	
5	1212039-005	CAM/ROD WELD	X	X	X	X			1
6	4203373-003	DELIVERY - ANTI-CHEAT	X	X	X	X	1		
6	4203373-004	DELIVERY - ANTI-CHEAT	X	X	X	X		1	
6	4203373-005	DELIVERY - ANTI-CHEAT	X	X	X	X			1
7	4050239	SCREW - #8-32 X 3/8	X	X	X	X	3	3	3
8	1212203-003	DELIVERY WELD	X	X	X	X	1		
8	1212203-004	DELIVERY WELD	X	X	X	X		1	
8	1212203-005	DELIVERY WELD	X	X	X	X			1
9	4206631-001	DELIVERY MOUNT - LEFT	X	X	X	X	1	1	1
9A	4206631-003	DELIVERY MOUNT - RT (NOT SHOWN)	X	X	X	X	1	1	1
10	4050423	SCREW - #8-18 X 3/8	X	X	X	X	4	4	4
11	4205263	TYPE 7 SNAP-IN NYLINER	X	X	X	X	4	4	4
12	4050513	#8-32 TWIN WHIZ LOCK NUT	X	X	X	X	2	2	2
13	4203377-003	DELIVERY FALSE BOX	X	X	X	X	1		
13	4203377-004	DELIVERY FALSE BOX	X	X	X	X		1	
14	4203377-005	DELIVERY FALSE BOX	X	X	X	X			1

AMB = AMBIENT - NON AIR CONDITIONED

A/C = AIR CONDITIONED

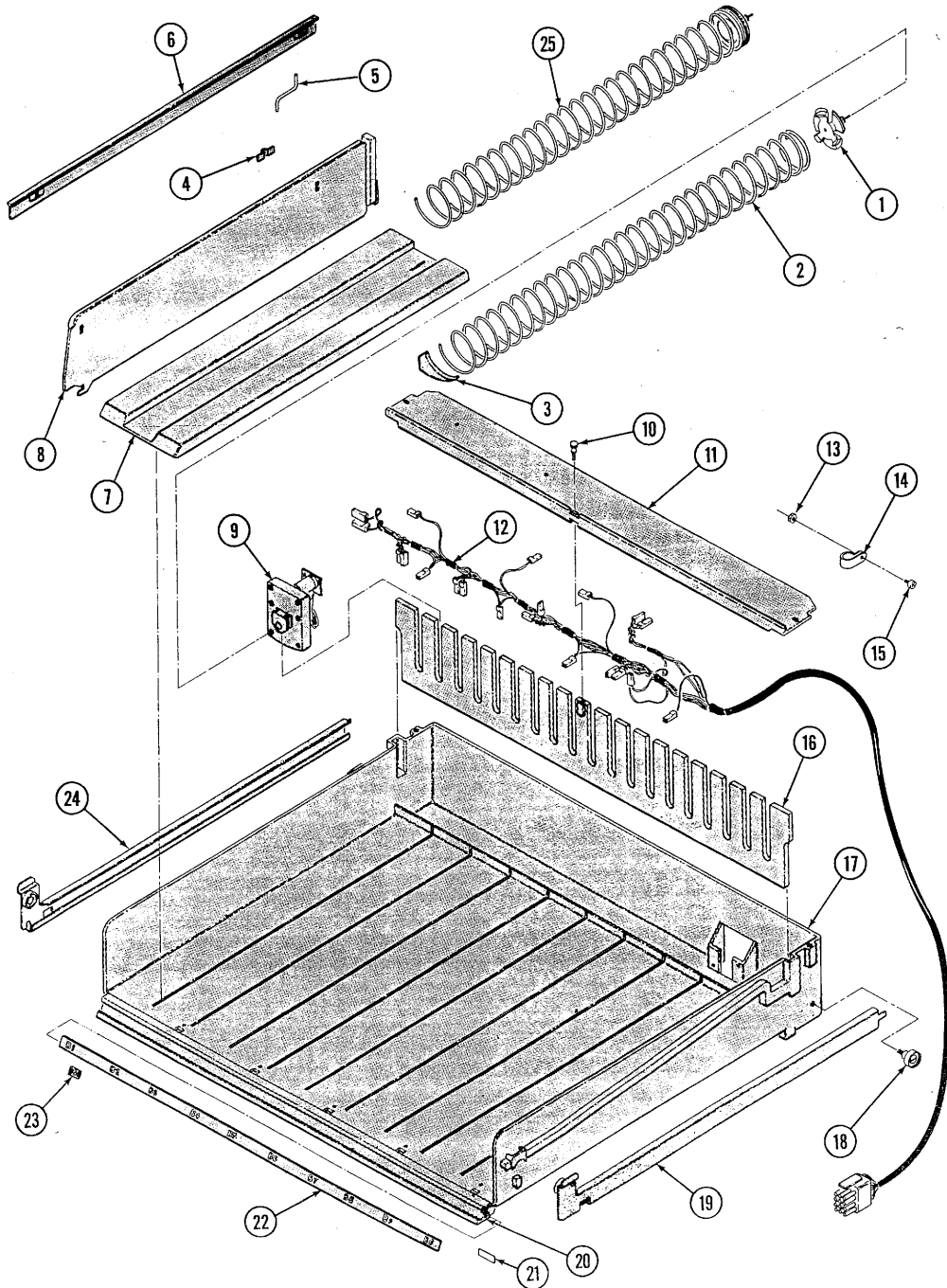
3-W = 3 WIDE UNITS

4-W = 4 WIDE UNITS

5-W = 5 WIDE UNITS

A/R = AS REQUIRED

TRAY ASSEMBLY



ITEM	PART NO.	DESCRIPTION	115V	230V	AMB	A/C	3-W	4-W	5-W
	1210924-001	TRAY ASSY - 5 WIDE - 10 SELECT	X	X	X	X			2
	1210924-002	TRAY ASSY - 5 WIDE - 12 SELECT	X	X	X	X			1
	1210924-017	TRAY ASSY - 5 WIDE - 15 SELECT	X	X	X	X			1
	1210924-018	TRAY ASSY - 5 WIDE - 18/30/48 SELECT	X	X	X	X			1
	1210924-019	TRAY ASSY - 5 WIDE - 15/24 SELECT	X	X	X	X			1
1	4202015	AUGER COUPLING	X	X	X	X			A/R
2	4200272-000	AUGER - 15 SEL - CANDY	X	X	X	X			A/R
	4200272-001	AUGER - 18 SEL - CANDY	X	X	X	X			A/R
	4200272-002	AUGER - 24 SEL - CANDY	X	X	X	X			A/R
	4200272-003	AUGER - 30 SEL - CANDY	X	X	X	X			A/R
	4200272-004	AUGER - 12 SEL - CANDY	X	X	X	X			A/R
	4200272-005	AUGER - 9 SEL - CANDY	X	X	X	X			A/R
	4200272-006	AUGER - 6 SEL - CANDY	X	X	X	X			A/R
3	4025747	PRODUCT EJECTOR	X	X	X	X			A/R
4	4200281	SPRING CLIP	X	X	X	X			A/R
5	8370998	SPACER SUPPORT	X	X	X	X			A/R
6	8370660-5	SPACER	X	X	X	X			A/R
7	4200340	AUGER RETAINER	X	X	X	X			A/R
8	4025797	DIVIDER	X	X	X	X			A/R
9	4203432-002	24 VDC MOTOR - 360 DEGREE	X	X	X	X			A/R
10	8045233	#8-32 X 3/8 THUMB SCREW	X	X	X	X			A/R
11	4025802-003	MOTOR COVER	X	X	X	X			A/R
12	4203989-005	TRAY HARNESS - 5 WIDE	X	X	X	X			A/R
13	4050513	#8-32 TWIN WHIZ LOCK NUT	X	X	X	X			A/R
14	4060116	WIRE CLAMP	X	X	X	X			A/R
16	4025799	MOTOR MOUNTING PLATE	X	X	X	X			A/R
17	1211066	TRAY ASSY	X	X	X	X			A/R
18	4060670-001	ROLLER	X	X	X	X			A/R
19	1200321-002	SIDE RAIL - RIGHT SIDE	X	X	X	X			A/R
20	4202551-003	LABEL HOLDER	X	X	X	X			A/R
21	4202777	TAPE - 28 INCHES	X	X	X	X			A/R
22	4201209-001	SELECTION STRIP - "A" THRU "H"	X	X	X	X			A/R
23	4200051	PRICE LABEL - 1.50 - 3.15	X	X	X	X			A/R
24	1200321-003	SIDE RAIL - LEFT SIDE	X	X	X	X			A/R
25	4200272-007	AUGER - 10 SELECT - SNACK	X	X	X	X			A/R
25	4200272-008	AUGER - 12 SELECT - SNACK	X	X	X	X			A/R
25	4200272-009	AUGER - 15 SELECT - SNACK	X	X	X	X			A/R
25	4200272-010	AUGER - 7 SELECT - SNACK	X	X	X	X			A/R
25	4200272-011	AUGER - 8 SELECT - SNACK	X	X	X	X			A/R
26	4203432-003	24 VDC MOTOR - 180 DEGREE - G/M	X	X	X	X			A/R
27	4200164-000	#8-32 X 1 1/4 SHOULDER SCREW	X	X	X	X			A/R
28	4202625-001	G & M HELIX TUBE	X	X	X	X			A/R
29	4202624-001	GUM & MINT SPACER STRIP	X	X	X	X			A/R
30	4203101	END CAP	X	X	X	X			A/R
31	4202313	AUGER - 36 SEL - GUM & MINT	X	X	X	X			A/R

AMB = AMBIENT - NON AIR CONDITIONED

A/C = AIR CONDITIONED

3-W = 3 WIDE UNITS

4-W = 4 WIDE UNITS

5-W = 5 WIDE UNITS

A/R = AS REQUIRED

ITEM	PART NO.	DESCRIPTION	115V	230V	AMB	A/C	3-W	4-W	5-W
	1212284-301	TRAY ASSY - 3 WIDE - 12 SELECT	X	X	X	X	4		
	1212284-303	TRAY ASSY - 3 WIDE - 18 SELECT	X	X	X	X	1		
	1212284-304	TRAY ASSY - 3 WIDE - 15/24 G&M	X	X	X	X	1		
	1212284-401	TRAY ASSY - 4 WIDE - 12 SELECT	X	X	X	X		3	
	1212284-403	TRAY ASSY - 4 WIDE - 18 SELECT	X	X	X	X		2	
	1212284-404	TRAY ASSY - 4 WIDE - 15/24 G&M	X	X	X	X		1	
1	4203275	PRODUCT TRAY	X	X	X	X	1		
1	4203276	PRODUCT TRAY	X	X	X	X		1	
2	4060670-004	ROLLER	X	X	X	X	2	2	
3	4203509	CABLE TIE	X	X	X	X	1	1	
4	4203468	HARNESS CLAMP	X	X	X	X	1	1	
5	4203989-003	TRAY HARNESS - 3 WIDE	X	X	X	X	1		
5	4203989-004	TRAY HARNESS - 4 WIDE	X	X	X	X		1	
6	4203277-003	MOTOR COVER - 3 WIDE	X	X	X	X	1		
6	4203277-004	MOTOR COVER - 4 WIDE	X	X	X	X		1	
7	4203432-002	24 VDC MOTOR - 360 DEGREE	X	X	X	X	A/R	A/R	
8	4025748	PRODUCT PUSHER	X	X	X	X	A/R	A/R	
9	4200272-000	AUGER - 15 SELECT - CANDY	X	X	X	X	A/R	A/R	
9	4200272-001	AUGER - 18 SELECT - CANDY	X	X	X	X	A/R	A/R	
9	4200272-002	AUGER - 24 SELECT - CANDY	X	X	X	X	A/R	A/R	
9	4200272-003	AUGER - 30 SELECT - CANDY	X	X	X	X	A/R	A/R	
9	4200272-004	AUGER - 12 SELECT - CANDY	X	X	X	X	A/R	A/R	
9	4200272-005	AUGER - 9 SELECT - CANDY	X	X	X	X	A/R	A/R	
9	4200272-006	AUGER - 6 SELECT - CANDY	X	X	X	X	A/R	A/R	
9	4202313	AUGER - 36 SELECT - GUM & MINT	X	X	X	X	A/R	A/R	
10	4202015	AUGER COUPLING	X	X	X	X	A/R	A/R	
11	4200272-007	AUGER - 10 SELECT - SNACK	X	X	X	X	A/R	A/R	
11	4200272-008	AUGER - 12 SELECT - SNACK	X	X	X	X	A/R	A/R	
11	4200272-009	AUGER - 15 SELECT - SNACK	X	X	X	X	A/R	A/R	
11	4200272-010	AUGER - 7 SELECT - SNACK	X	X	X	X	A/R	A/R	
11	4200272-011	AUGER - 8 SELECT - SNACK	X	X	X	X	A/R	A/R	
12	4203432-003	24 VDC MOTOR - 180 DEGREE - G & M	X	X	X	X	A/R	A/R	
13	4200164-000	#8-32 XS 1 1/4 SHOULDER SCREW	X	X	X	X	A/R	A/R	
14	4202625-001	G & M HELIX TUBE	X	X	X	X	A/R	A/R	
15	4202624-001	GUM & MINT SPACER STRIP	X	X	X	X	A/R	A/R	
16	4203101	END CAP	X	X	X	X	A/R	A/R	
17	4202313	AUGER - 36 SELECT - GUM & MINT	X	X	X	X	A/R	A/R	
18	4025797	PRODUCT DIVIDER	X	X	X	X	A/R	A/R	
19	4200340	HELIX RETAINER	X	X	X	X	A/R	A/R	
20	8370660-5	PRODUCT SPACER	X	X	X	X	A/R	A/R	
21	8370998	SPACER SUPPORT	X	X	X	X	A/R	A/R	
22	4200281	SPRING CLIP	X	X	X	X	A/R	A/R	
23	1200321-002	TRAY RAIL - LEFT SIDE	X	X	X	X	A/R	A/R	
24	1200321-003	TRAY RAIL - RIGHT SIDE	X	X	X	X	A/R	A/R	
25	4203341	PRICE SCROLL	X	X	X	X	A/R	A/R	
26	4203229-003	LABEL HOLDER - 3 WIDE	X	X	X	X	A/R		
26	4203229-004	LABEL HOLDER - 4 WIDE	X	X	X	X		A/R	
27	4203707	SELECTION IDENTIFICATION	X	X	X	X	A/R	A/R	
28		GUM & MINT HELIX KIT (OPTIONAL)	X	X	X	X	A/R	A/R	A/R

AMB = AMBIENT - NON AIR CONDITIONED

A/C = AIR CONDITIONED

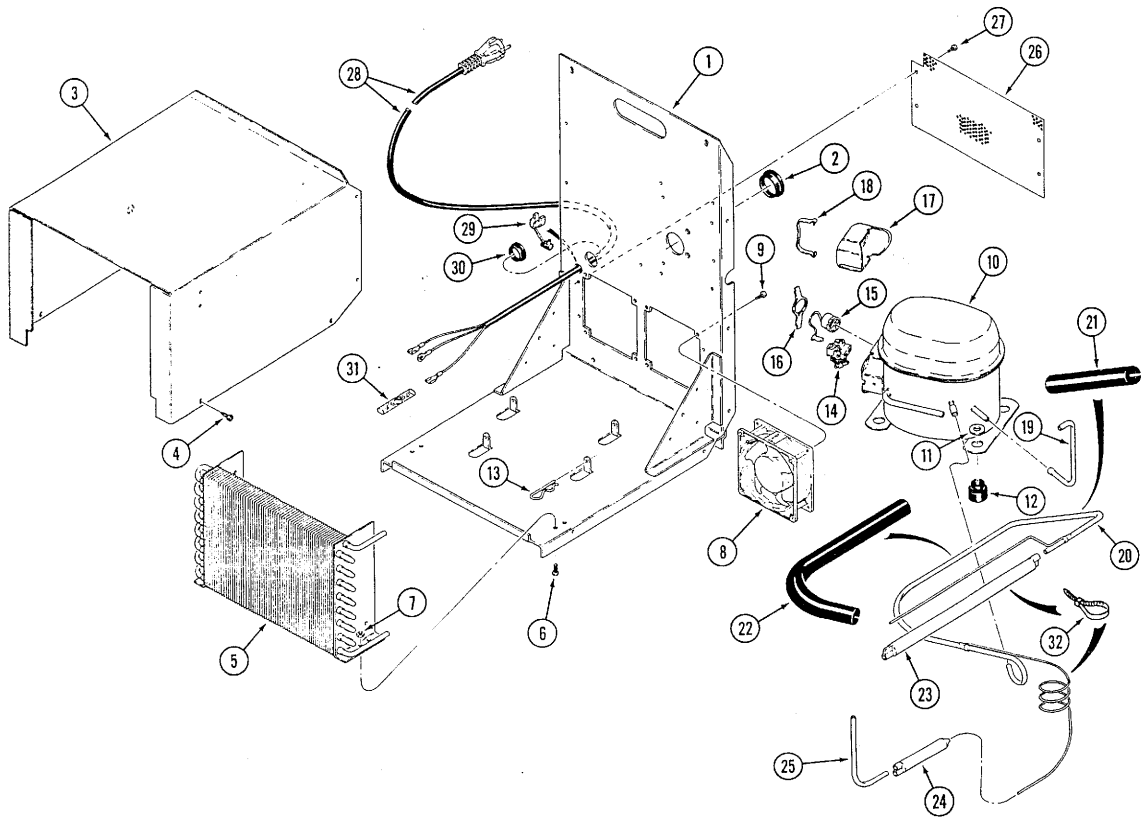
3-W = 3 WIDE UNITS

4-W = 4 WIDE UNITS

5-W = 5 WIDE UNITS

A/R = AS REQUIRED

REFRIGERATION ASSEMBLY (R-12)



ITEM	PART NO.	DESCRIPTION	115V	230V	AMB	A/C	3-W	4-W	5-W
		R-12 REFRIGERANT -REFER ASSY - 1/4 H.P							
	1212222-001	REFRIG ASSY - 1/4 HP - 230 VOLT		X		X	1	1	1
	1212222	REFRIG ASSY - 1/4 HP - 115 VOLT	X			X	1	1	1
1	1212209-001	REFER BASE WELD	X	X		X	1	1	1
2	8359801-2	SNAP BUSHING - SPLIT	X	X		X	1	1	1
3	4202328	COMPRESSOR COVER	X	X		X	1	1	1
4	4050202	#8-18 X 1/2 PHIL HD TEK SCREW	X	X		X	A/R	A/R	A/R
5	4060477	CONDENSER COIL	X	X		X	1	1	1
6	4050240	#8-32 XZ 3/8 PHIL SCREW	X	X		X	4	4	4
7	4050513	#8-32 TWIN WHIZ LOCK NUT	X	X		X	4	4	4
8	4034344-001	EVAPORATOR FAN - 230 VOLT		X		X	2	2	2
8	4034344-000	EVAPORATOR FAN - 115 VOLT	X			X	2	2	2
9	88000829	#10-24 X 3/8 PHIL	X	X		X	8	8	8
10	8343851-1	COMPRESSOR - 1/4 HP - 230 VOLT		X		X	1	1	1
10	8343851	COMPRESSOR - 1/4 HP - 115 VOLT	X			X	1	1	1
11	4050608	1/2 FLAT WASHER	X	X		X	4	4	4
12	8323090-1	GROMMET - COMPRESSOR	X	X		X	4	4	4
13	4050773-001	HITCH PIN	X	X		X	4	4	4
14	8333984-10	RELAY - STARTING - 230 VOLT		X		X	1	1	1
14	8333984-8	RELAY - STARTING - 115 VOLT	X			X	1	1	1
15	8045052-16	OVERLOAD PROTECTOR - 230 VOLT		X		X	1	1	1
15	8045052-12	OVERLOAD PROTECTOR - 115 VOLT	X			X	1	1	1
16	8344305	SPRING - OVERLOAD	X	X		X	1	1	1
17	8344308	COVER - TERMINAL	X	X		X	1	1	1
18	8344306	BALE STRAP	X	X		X	1	1	1
19	4060716	DISCHARGE LINE	X	X		X	1	1	1
20	1212219	SUCTION LINE WELD	X	X		X	1	1	1
21	8365271-1	INSULATION - 8 INCHES	X	X		X	1	1	1
22	8365271-3	INSULATION - 24 INCHES	X	X		X	1	1	1
23	4060480-001	ACCUMULATOR - 13 INCHES	X	X		X	1	1	1
24	7189453-000	DRIER	X	X		X	1	1	1
25	4202633	SERVICE LINE	X	X		X	1	1	1
26	4205106	FAN GUARD	X	X		X	1	1	1
27	8800766	#8-32 X 1/2 PHILLIPS	X	X		X	1	1	1
28	4202512-002	POWER CORD - 230 VOLT		Xx		1	1	1	1
	4202512-001	POWER CORD - 230 VOLT		X		X	1	1	1
	4033631-000	POWER CORD - 115 VOLT	X			X	1	1	1
29	4033683	CORD - STRAIN RELIEF BUSHING	X	X		X	1	1	1
30	8359801-2	SNAP BUSHING - SPLIT	X	X		X	1	1	1
31	4033527	CONNECTOR - LINE SPLICE	X	X		X	2	2	2
32	4033712	CABLE TIE	X	X		X	A/R	A/R	A/R
	4203995-001	REFER HARNESS (NOT SHOWN)	X	X		X	1	1	1

AMB = AMBIENT - NON AIR CONDITIONED

A/C = AIR CONDITIONED

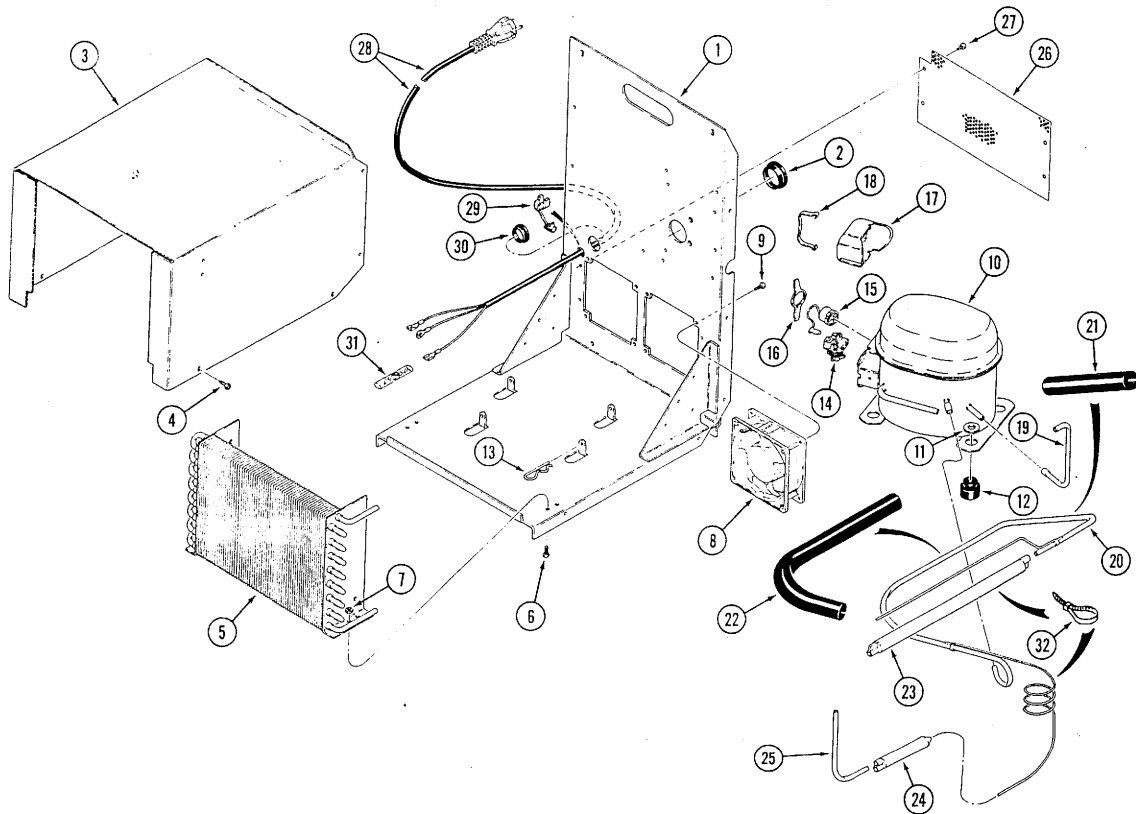
3-W = 3 WIDE UNITS

4-W = 4 WIDE UNITS

5-W = 5 WIDE UNITS

A/R = AS REQUIRED

REFRIGERATION ASSEMBLY (R-134a)



ITEM	PART NO.	DESCRIPTION	115V	230V	AMB	A/C	3-W	4-W	5-W
		R-134a REFRIGERANT -REFER ASSY - 1/4 H.P							
	1212327-001	REFRIG ASSY - 1/4 HP - 230 VOLT		X		X	1	1	1
	1212327	REFRIG ASSY - 1/4 HP - 115 VOLT	X			X	1	1	1
1	1212209-001	REFER BASE WELD	X	X		X	1	1	1
2	8359801-2	SNAP BUSHING - SPLIT	X	X		X	1	1	1
3	4202328	COMPRESSOR COVER	X	X		X	1	1	1
4	4050202	#8-18 X 1/2 PHIL HD TEK SCREW	X	X		X	A/R	A/R	A/R
5	4060477	CONDENSER COIL	X	X		X	1	1	1
6	4050240	#8-32 XZ 3/8 PHIL SCREW	X	X		X	4	4	4
7	4050513	#8-32 TWIN WHIZ LOCK NUT	X	X		X	4	4	4
8	4034344-001	EVAPORATOR FAN - 230 VOLT		X		X	2	2	2
8	4034344-000	EVAPORATOR FAN - 115 VOLT	X			X	2	2	2
9	88000829	#10-24 X 3/8 PHIL	X	X		X	8	8	8
10	4205469	COMPRESSOR - 1/4 HP - 230 VOLT		X		X	1	1	1
10	4203789	COMPRESSOR - 1/4 HP - 115 VOLT	X			X	1	1	1
11	4050608	1/2 FLAT WASHER	X	X		X	4	4	4
12	8323090-1	GROMMET - COMPRESSOR	X	X		X	4	4	4
13	4050773-001	HITCH PIN	X	X		X	4	4	4
14	8333984-10	RELAY - STARTING - 230 VOLT		X		X	1	1	1
14	8333984-8	RELAY - STARTING - 115 VOLT	X			X	1	1	1
15	8045052-16	OVERLOAD PROTECTOR - 230 VOLT		X		X	1	1	1
15	8045052-12	OVERLOAD PROTECTOR - 115 VOLT	X			X	1	1	1
16	8344305	SPRING - OVERLOAD	X	X		X	1	1	1
17	8344308	COVER - TERMINAL	X	X		X	1	1	1
18	8344306	BALE STRAP	X	X		X	1	1	1
19	4060716	DISCHARGE LINE	X	X		X	1	1	1
20	1212219	SUCTION LINE WELD	X	X		X	1	1	1
21	8365271-1	INSULATION - 8 INCHES	X	X		X	1	1	1
22	8365271-3	INSULATION - 24 INCHES	X	X		X	1	1	1
23	4060480-001	ACCUMULATOR - 13 INCHES	X	X		X	1	1	1
24	4205468	DRIER	X	X		X	1	1	1
25	4202633	SERVICE LINE	X	X		X	1	1	1
26	4205106	FAN GUARD	X	X		X	1	1	1
27	8800766	#8-32 X 1/2 PHILLIPS	X	X		X	1	1	1
28	4202512-002	POWER CORD - 230 VOLT		Xx		1	1	1	1
	4202512-001	POWER CORD - 230 VOLT		X		X	1	1	1
	4033631-000	POWER CORD - 115 VOLT	X			X	1	1	1
29	4033683	CORD - STRAIN RELIEF BUSHING	X	X		X	1	1	1
30	8359801-2	SNAP BUSHING - SPLIT	X	X		X	1	1	1
31	4033527	CONNECTOR - LINE SPLICE	X	X		X	2	2	2
32	4033712	CABLE TIE	X	X		X	A/R	A/R	A/R
	4203995-001	REFER HARNESS (NOT SHOWN)	X	X		X	1	1	1

AMB = AMBIENT - NON AIR CONDITIONED

A/C = AIR CONDITIONED

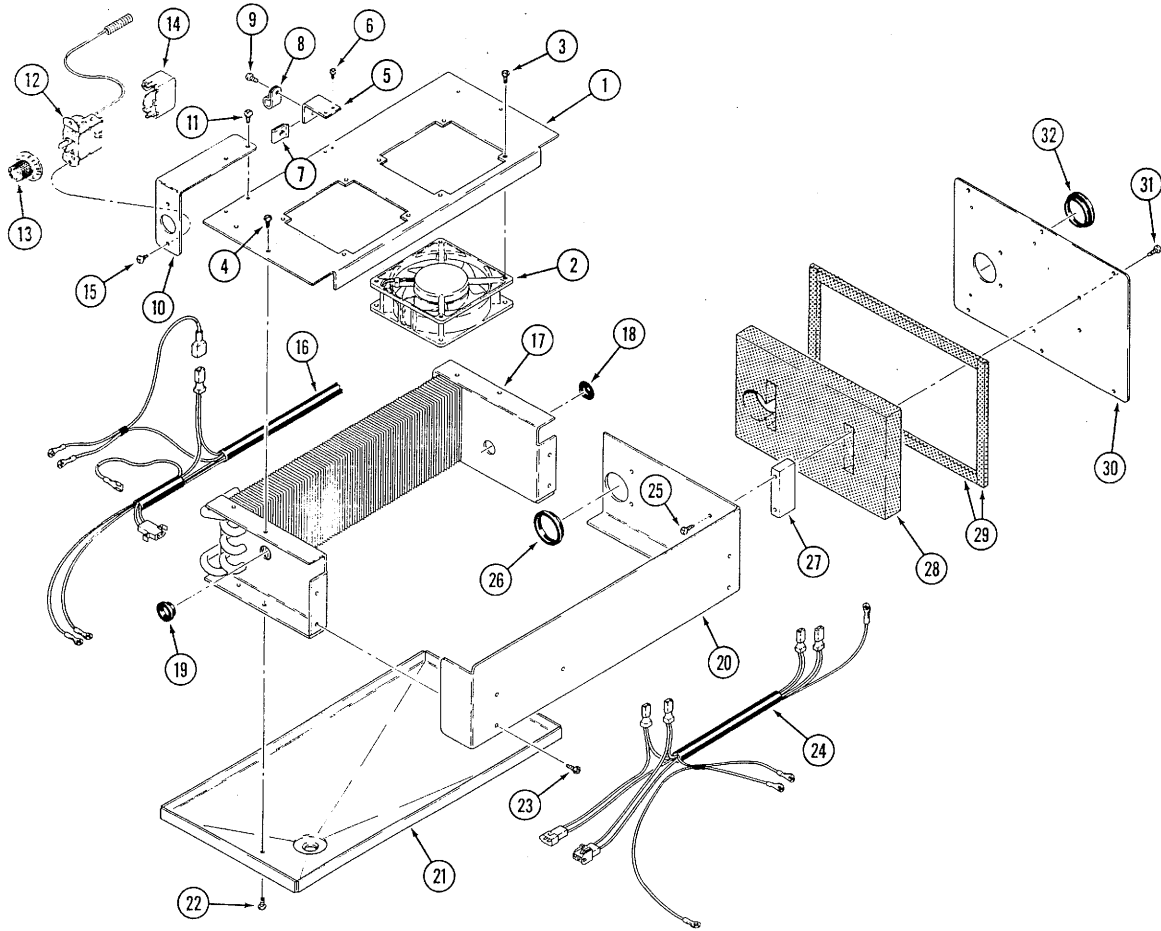
3-W = 3 WIDE UNITS

4-W = 4 WIDE UNITS

5-W = 5 WIDE UNITS

A/R = AS REQUIRED

EVAPORATOR ASSEMBLY



ITEM	PART NO.	DESCRIPTION	115V	230V	AMB	A/C	3-W	4-W	5-W
		EVAPORATOR ASSEMBLY							
1	4203983	DUAL FAN PLATE	X	X		X	1	1	1
2	4034344-001	EVAPORATOR FAN - 230 VOLT		X		X	2	2	2
	4034344-000	EVAPORATOR FAN - 115 VOLT	X			X	2	2	2
3	800829	#10-24 X 3/8 PHIL SCREW	X	X		X	8	8	8
4	8800552	#10-16 X 5/8 PHIL SCREW	X	X		X	2	2	2
5	4202316	THERMOSTAT BULF BRKT	X	X		X	1	1	1
6	8800852	#8-32 X 3/8 PHIL SCREW	X	X		X	2	2	2
7	8352837	#10-32 U TYPE SPRING NUT	X	X		X	1	1	1
8	4060116	PLASTIC WIRE CLAMP	X	X		X	1	1	1
9	8800833	#10-32 X 1/2 PHIL SCREW	X	X		X	1	1	1
10	4202330	THERMOSTAT MOUNT	X	X		X	1	1	1
11	8800852	#10-16 X 5/8 PHIL SCREW	X	X		X	2	2	2
12	4034324-001	THERMOSTAT	X	X		X	1	1	1
13	4201707	THERMOSTAT KNOB	X	X		X	1	1	1
14	4201664	THERMOSTAT CONTROL COVER	X	X		X	1	1	1
15	8800852	#8-32 X 3/8 PHIL SCREW	X	X		X	2	2	2
16	4203995-001	REFER HARNESS	X	X		X	1	1	1
17	4202269-001	EVAPORATOR COIL	X	X		X	1	1	1
18	4203181-001	SNAP BUSHING - 1/2 DIA	X	X		X	1	1	1
19	7205135-003	HOLE PLUG	X	X		X	1	1	1
20	4203981	EVAPORATOR MOUNT	X	X		X	1	1	1
21	4203982	EVAPORATOR PAN	X	X		X	1	1	1
22	8801204	#10-16 X 3/8 PHIL SCREW	X	X		X	2	2	2
23	4050202	#8-18 X 1/2 PHIL TEK SCREW	X	X		X	4	4	4
24	4205147-001	HARNESS - EVAP FAN	X	X		X	1	1	1
25	8800636	#8-18 X 1/2 PHIL HD SCREW	X	X		X	2	2	2
26	8359801-2	SNAP BUSHING - SPLIT	X	X		X	1	1	1
27	4202276	EVAPORATOR SPACER	X	X		X	2	2	2
28	4205067	EVAPORATOR BACKUP INSUL	X	X		X	1	1	1
29	4060006-500	1/4 X 1/2 FOAM TAPE	X	X		X	3FT	3FT	3FT
30	4203978	EVAPORATOR BACKUP	X	X		X	1	1	1
31	8800636	#8-18 X 1/2 PHIL HD SCREW	X	X		X	2	2	2
32	8359801-2	SNAP BUSHING - SPLIT	X	X		X	1	1	1
	8338154-14	NAMEPLATE (NOT SHOWN)	X	X		X	1	1	1
	1211465-002	16" GROUND WIRE (NOT SHOWN)	X	X		X	1	1	1
	1211465-003	13" GROUND WIRE (NOT SHOWN)	X	X		X	1	1	1

AMB = AMBIENT - NON AIR CONDITIONED

A/C = AIR CONDITIONED

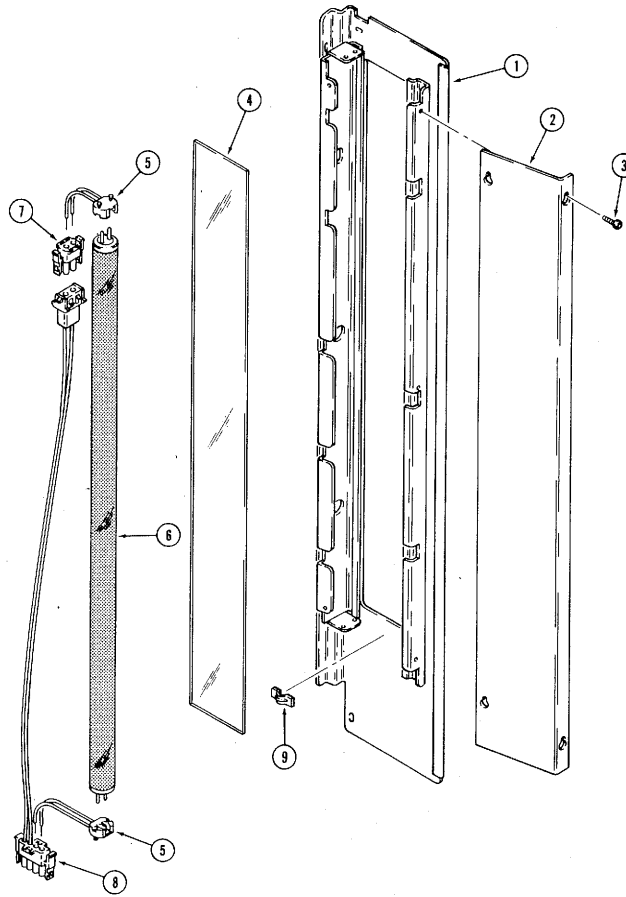
3-W = 3 WIDE UNITS

4-W = 4 WIDE UNITS

5-W = 5 WIDE UNITS

A/R = AS REQUIRED

LIGHT ASSEMBLY



ITEM	PART NO.	DESCRIPTION	115V	230V	AMB	A/C	3-W	4-W	5-W
	1212034-001	LIGHT ASSEMBLY	X	X	X		1	1	1
	1212034-002	LIGHT ASSEMBLY	X	X		X	1	1	1
1	1211462-002	LIGHT WELD	X	X	X		1	1	1
1	1212462-004	LIGHT WELD	X	X		X	1	1	1
2	4203463-002	LIGHT DOOR	X	X	X		1	1	1
2	4205094	LIGHT DOOR	X	X		X	1	1	1
3	4050423	#8-18 X 3/8 PHIL SCREW	X	X	X	X	3	3	3
4	4203464	LAMP DIFFUSER	X	X	X		1	1	1
4	4205101	LIGHT DIFUSER	X	X		X	1	1	1
5	4203637	LAMP SOCKET	X	X	X	X	2	2	2
6	4203131	LAMP - F30 T12	X	X	X	X	1	1	1
7	4203637	TERMINAL HOUSING	X	X	X	X	1	1	1
8	4203465	LAMP HARNESS	X	X	X	X	1	1	1
9	4060130	PRESS CLIP - 1/4"	X	X	X	X	1	1	1

WIRING SCHEMATIC

P/N 4205268 REV. C

