



Don't go 'round hungry!

3.15  
○ MAKE ALTERNATE SELECTION  
○ PRICE  
○ USE EXACT CHANGE

**MULTI-PRICE  
ELECTRONIC  
COINAGE SYSTEM**



**15 Selection  
AND  
25 Selection**

**GLASSFRONT  
VENDORS**

# SERVICE & PARTS MANUAL

P/N 20824  
REVISION 21, JULY 1986

This Manual Covers Machines:  
15 Column - S/N 402501 to 405000  
25 Column - S/N 302511 to 305010

# TABLE OF CONTENTS

INTRODUCTION .....	Page 3
SPECIFICATIONS .....	Page 3
INSTALLATION INSTRUCTIONS .....	Page 3
HELIX TIMING .....	Page 4
PRODUCT LOADING .....	Page 5
POWER SWITCH .....	Page 5
COINAGE INSTALLATION & OPERATION GUIDE .....	Page 6
CHANGER INSTALLATION .....	Page 6
PRICE SETTING INSTRUCTIONS .....	Page 6
ELECTRONIC CONTROLLER .....	Page 6
PRICE SETTING INSTRUCTIONS .....	Page 6
FREE VEND .....	Page 7
SERVICE MESSAGES .....	Page 7
PRICING LABELS .....	Page 7
DIGITAL READOUT .....	Page 7
CONTROLLER & DIGITAL READOUT .....	Page 8
GENERAL FUNCTIONS .....	Page 8
ENTERING THE SERVICE MODE .....	Page 8
VEND PRICE VERIFICATION .....	Page 8
NORMAL VEND OPERATION .....	Page 8
TROUBLE SHOOTING .....	Page 9
MOTOR & MOTOR CIRCUIT .....	Page 9
MOTOR CARRIER SWITCH .....	Page 9
VENDOR REFUSES ALL COINS .....	Page 9
MOTOR JUMPER .....	Page 10
CARE & CLEANING .....	Page 11
ACCEPTOR .....	Page 11
WIRING DIAGRAM 25 COLUMN .....	Page 12
WIRING DIAGRAM 15 COLUMN .....	Page 13
UNIT FINAL ASSEMBLY .....	Pages 14 & 15
COMPLETE DOOR ASSEMBLY .....	Pages 16 & 17
COMPLETE DOOR ASSEMBLY (Cont.) .....	Pages 18 & 19
COMPLETE CABINET ASSEMBLY .....	Pages 19 & 21
PUSH BUTTON FINAL ASSEMBLY .....	Page 22
COMPLETE COIN INSERT CASTING ASSEMBLY .....	Page 23
COMPLETE CONTROL PANEL ASSEMBLY .....	Page 24
FLAT WIRE HELIX TRAY FINAL ASSEMBLY	
TRAY 1, 2, & 3 — 15 Col. ....	Page 25
FLAT WIRE HELIX TRAY FINAL ASSEMBLY	
TRAY 1, 2, & 3 — 25 COL. ....	Page 26
WIRE HELIX TRAY FINAL ASSEMBLY	
TRAY 4 — 15 Col. ....	Page 27
WIRE HELIX TRAY FINAL ASSEMBLY	
TRAY 4 — 25 COL. ....	Page 28
WIRE HELIX TRAY FINAL ASSEMBLY	
TRAY 5 — 15 COL. ....	Page 29
WIRE HELIX TRAY FINAL ASSEMBLY	
TRAY 5 — 25 COL. ....	Page 30

# INTRODUCTION:

This Manual has a "Lance" blue cover for easy identification. The contents will cover both the 15 Selection and 25 Selection Glass Front Vendors. The glass front vendor has a "first-in", "first-out" vending procedure and features the "Vend the Item You See", therefore does not require a display item and eliminates the need of product rotation to insure product freshness. Each product tray can be pulled forward for easy loading of the items and cleaning and servicing. There are two types of trays; a Flat Wire Helix Tray, which is used for vending large items, such as pastry, chips, etc.; and a Round Wire Helix Tray for small items such as candy, gum and mints. Each selection has an individual hopper and advancing the next product to the Vend Area.

These vendors will include an electronic multi-price coin changer and control system with a digital display on the outer door. All selections can be individually priced at different vend prices. The coinage and control system will be explained in detail through-out this manual.

This manual will cover machines produced and identified with the following serial numbers:

#402501 to 405000 for 15 Column Machines      #302511 to 305010 for 25 Column Machines

## SPECIFICATIONS:

CABINET:	15 SELECTION	25 SELECTION
Height:	68"	Height: 68"
Width:	28"	Width: 38"
Depth:	31"	Depth: 31"
Weight:	425 Pounds	Weight: 570 Pounds

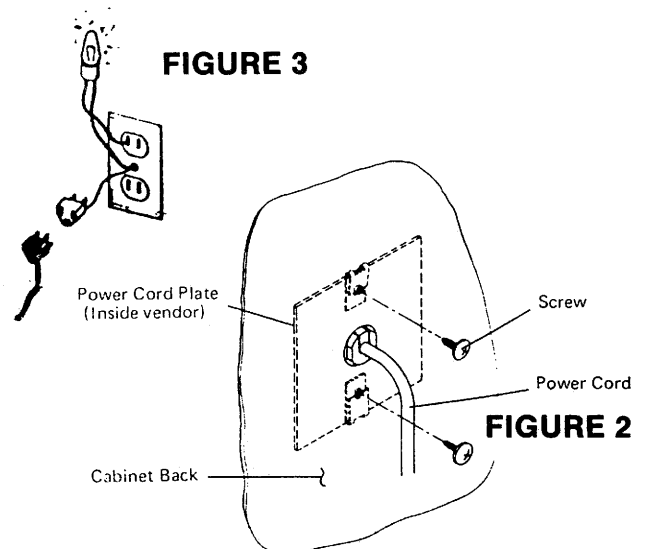
**ELECTRICAL:** Line Source 115 VAC, 60 Cycle  
Current - 1.4 AMPs maximum

### COINAGE & CONTROL SYSTEM:

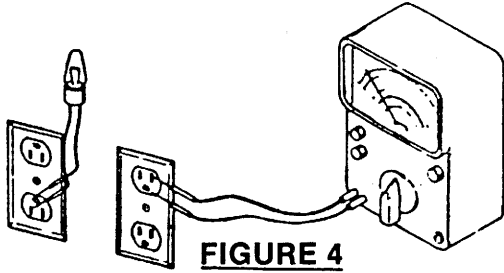
Accepts nickels, dimes and quarters. Selection of individual vend prices, 5¢ through \$3.15, adjustable in 5¢ increments. Digital display on outer door indicates amount of credit deposited for each vend. Escrow or coin return until vend.

## INSTALLATION INSTRUCTIONS:

1. Remove all packing material in a manner not to damage the finish or exterior of that Vendor. To unlock the door, the key will be found taped Inside the Coin Return Cup. Remove all shipping brackets, inner packing material, and tape from the Vendor. To try to operate the Vendor without removing the tape from the moving parts may result in damage.
2. Record the Model Number and Serial Number of the Vendor and refer to these numbers on all inquiries and Correspondence pertaining to that Vendor.
3. Run the Power Cord through the hole in the cabinet back. Align the two holes on the Cord Plate with the holes on the back of the Cabinet. Then attach the Plate, with the screws provided. (See Fig. 2)
4. To insure safe operation of an electrically equipped vender, the vender must be grounded. To verify that the receptacle is properly grounded, connect one probe of the test light to the screw holding the receptacle cover. Insert the other probe into the opening of each outlet. If the test light does not light when placed in either side of the receptacle, the receptacle is not grounded. To provide a proper ground use an adapter which has a ground wire attached. The wire should be connected to a ground such as a water pipe. If the receptacle is grounded but is not the three-prong type, the adapter may be used. Attach the wire to a ground or to the receptacle cover securing screw. (See Fig. 3)



## INSTALLATION INSTRUCTIONS: (Continued)

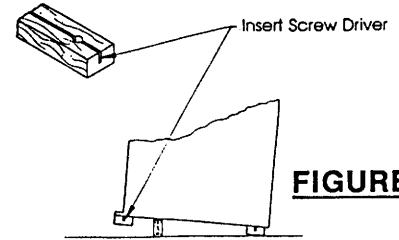


**Receptacle with three (3) female openings.** To verify that the receptacle is properly grounded and polarized, insert one probe of a voltmeter (set to check AC line voltage) or test light, in the ground terminal position "hole" of the 3-position receptacle, insert the other probe of (of voltmeter or test light) in the L.H. slot (if ground "hole" is up) or in the R.H. slot (if ground "hole" is down). You should read 115 VAC on the voltmeter, or the light should light.

If you find this is not the result, you should contact a licensed electrician to correctly polarize and/or ground the receptacle to insure safe operation.

Consult Local, State and Federal codes for compliance before Installation of vendor. (See Fig. 4)

5. Remove Knock-A-Way Support by inserting a screwdriver and splitting the Knock-A-Way in two. Turn the leveling screws in as far as possible. Position the Vendor in its place of operation. Level the Vendor, making sure all levelers are touching the floor. The Vendor must be level for proper operation and acceptance of coins through the Coin Mechanism. If the Vendor is properly leveled, it should not rock or teeter on any of the levelers. (See Fig. 1)



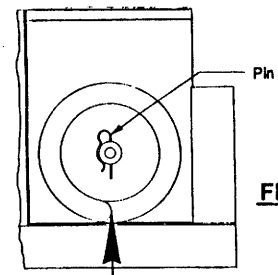
**FIGURE 1**

## HELIX TIMING:

To obtain a consistent vend and proper advancement of the product, the Helix coils must be properly timed. When installing or replacing a motor it is necessary to time the Helix. Make sure the Motor is in its detent or home position.

### SMALL FLAT HELIX:

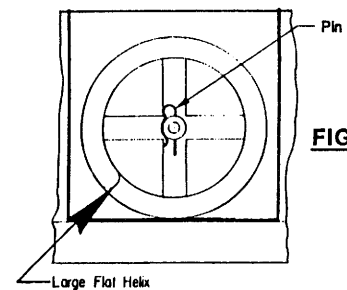
To remove, pull out pin at back of Helix. Replace Helix on motor shaft with end of Helix positioned as shown by arrow, align hole in Helix with motor shaft and replace pin. See Figure 5.



**FIGURE 5**

### LARGE FLAT HELIX:

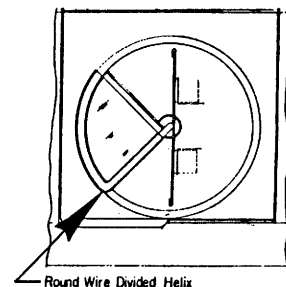
Same procedure as defined above for Small Flat Helix. See Figure 6.



**FIGURE 6**

### ROUND WIRE (DIVIDED) HELIX:

No timing is needed. Be sure the "D" on helix aligns with the "D" hole on the Motor. See Figure 7.



**FIGURE 7**

# PRODUCT LOADING:

1. Lift front of drawer upward and pull forward to stops.
2. Load all products upright, front to back, with the identification forward.
3. The Flat Wire Helix loads with the products resting on the bottom coil of the Helix.
4. The Round Wire Helix loads with the products resting on the floor between the Helix.
5. After loading, check to see that the adjustable floor (See Helix Timing) is properly adjusted. Adjust by moving floor in or out to assure the front product will not skip out of the Helix.
6. Finally, test vend each selection to insure the first slot in each selection is filled and at the Vend position.
7. Make sure the products fit easily into the Helix spacings.

**15 SELECTION**



Flat Wire Helix Tray

**25 SELECTION**



Flat Wire Helix Tray

**FIGURE 8**



Round Wire Helix Tray

**FIGURE 9**



Round Wire Helix Tray

## POWER SWITCH:

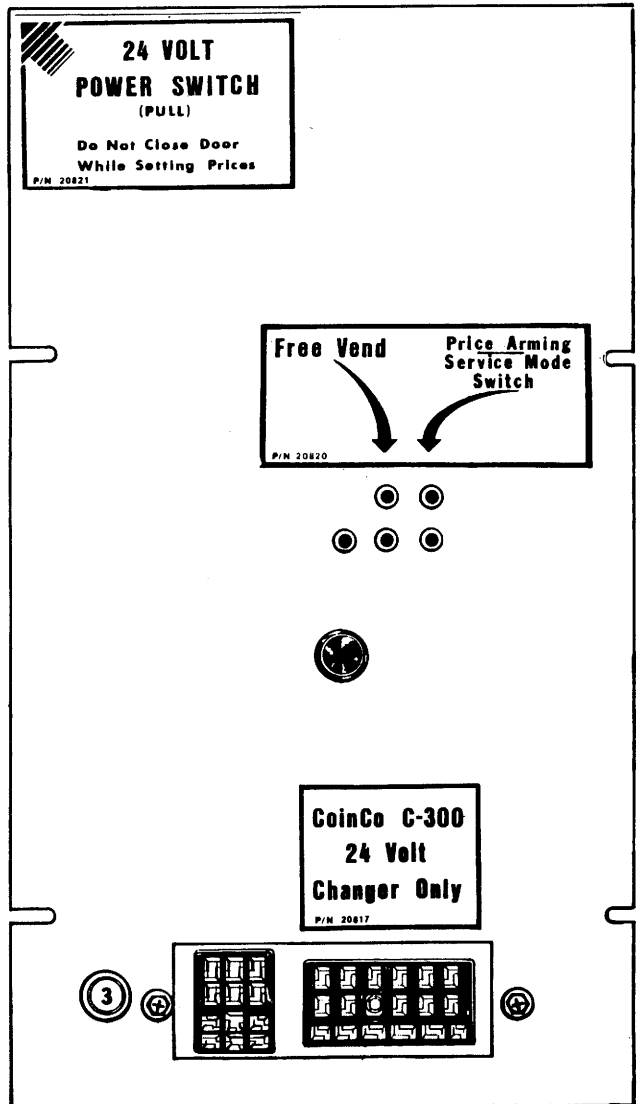
These machines will include a "POWER SWITCH" located above the Control Panel. This switch will be operated by the Outer Door. When the door is closed, the switch will be operated to the "ON" position, placing the vendor in the VEND MODE. When the door is opened, the switch will operate to the "OFF" position removing all power to the Controller, Selection Buttons and the complete vending circuit, or 24 Volt system.

When servicing the machine, with the main door opened, it will be necessary to place the POWER SWITCH in it's "ON" position. "PULL" outward on the Switch Plunger. Do not close the door or actuate this switch while programming the Controller, this will interrupt the power and the input will not be placed in memory.

**NOTE:** Improper adjustment of the Power Switch will make the Vendor inoperative. To check adjustment, with the Outer Door closed:

1. Push Selection Button - "Price" light and "Vend Price" will appear in display - Switch adjusted properly.
2. Push Selection Button - Blank display - Switch out of adjustment, adjust until Step #1 is evident.

**FIGURE 10**



**VENDOR CHANGER SOCKET**

# **COINAGE INSTALLATION & OPERATION GUIDE:**

Coinco C300-9404 Coin Changer will be used on these machines. The changer will accept nickels, dimes and quarters and accumulate up to \$3.15 in 5¢ increments. All functions and prices are controlled by the Controller, not the Coin Changer. Refer to PRICE SETTING INSTRUCTIONS section of this manual for setting Vend Prices.

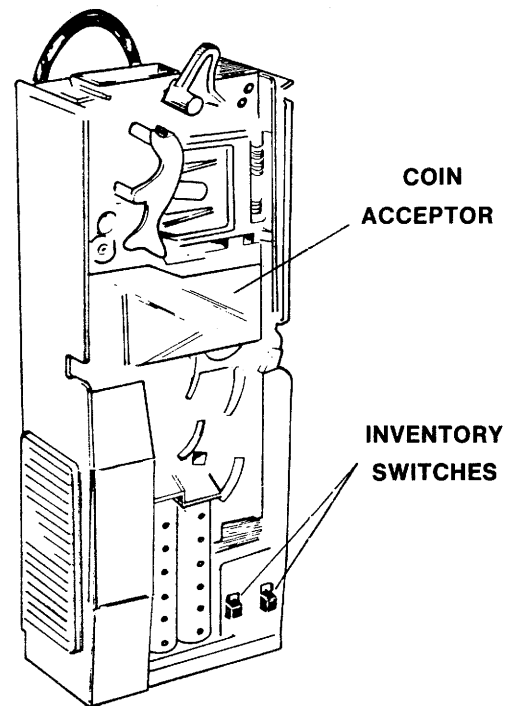
## **CHANGER INSTALLATION:**

1. With the Coin Acceptor removed, set the three key holes in the back of the coin changer over the mounting screws in the vendor. Tighten securely.
2. Replace the Acceptor in the changer.
3. Plug the changer into the Vendor Changer Socket. (See Figure 10)

**NOTE:** As an added protection, when removing or inserting the Changer, place the Power Switch in the "OFF" position.

4. Load the nickel and dime coin tubes, making sure all coins lie flat in the tubes.
5. Test with a variety of coins to insure proper operation and correct loading of coin tubes.

**NOTE:** Be sure all electrical connections, Plugs and Receptacles are secure and circuits are complete.



**FIGURE 12**

# **PRICE SETTING INSTRUCTIONS:**

**IMPORTANT:** Before any functions, price setting, vend price verification, etc., can be performed, it is necessary to "pull" the Power Switch to the "ON" position. The Power Switch is located above the Control Panel. Pull out on Switch to turn "ON". See Power Switch section on Page #5.

## **ELECTRONIC CONTROLLER:**

**NOTE:** Vend prices must be established for each Selection. On initial installation it is necessary to follow these instructions for all selections. **ALL SELECTIONS MUST BE PRICED.**

### **I. PRICE SETTING INSTRUCTIONS:**

- A. Enter the Service Mode by pulling the Power Switch to its "ON" position as described above and then depress the Price Arming/Service Switch (See Figure 10, Page 5). The display will show only a decimal point.

**NOTE:** Refer to "SERVICE MESSAGES" if anything other than decimal point is displayed.

- B. Press and release a Selection Button, the current vend price will be displayed.
- C. **TO INCREASE THE PRICE**, press the Selection button again, the price will increase by 5¢ every ½ second. Release the button when the desired price is displayed.
- D. If the price is correct, price setting is complete, go to Step F.

## PRICE SETTING INSTRUCTIONS: (Continued)

- E. **TO DECREASE THE PRICE**, leave the button released for one second. Press the button again, the price will decrease by 5¢ every ½ second. Release the button when the desired price is displayed. Price setting is now complete.
- F. The Controller will return to the Vend Mode after 25 seconds, or you may "Free Vend" by following steps below, starting with Step 2.

**CAUTION:** Do not close the outer door while in the Price Setting function, or actuate the Power Switch. If the Power Switch is actuated before the Controller returns to the Vend Mode the input will not be placed in memory. It is recommended that the "Free Vend" function be followed to assure proper exit of the Service Mode.

## II. FREE VEND:

1. Enter the Service Mode by pulling the Power Switch to it's on "ON" position as described above and then depress the Price Arming Switch (See Figure 10, Page 5).
2. Depress "FREE VEND" Switch (See Figure 10, Page 5), three (3) flashing bars will appear in the display.
3. Depress Selection button to "Free Vend". The Vend Price is displayed and the product is dispensed. If the product is not delivered, then "MAKE ANOTHER SELECTION" will appear in the display.
4. The Controller will return to the Vend Mode after the "Free Vend" is completed.

## III. SERVICE MESSAGES:

- A. Depress the Price Arming/Service Switch and observe the Credit Display:

### MESSAGES:

Decimal Point Only	= No problems
Letter "C" Displayed	= Possible changer problem, no vend in last 24 hours.
Motor number(s) Displayed	= Faulty motor(s). Check for shorted or jammed motor.

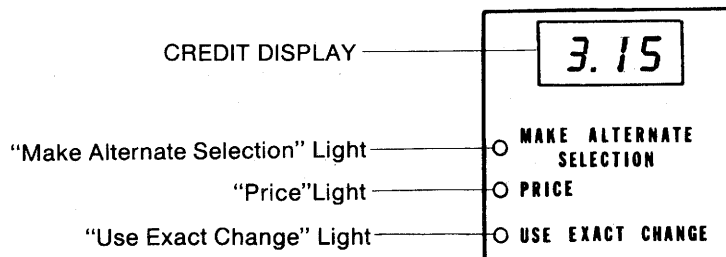
**NOTE:** If more than one problem, they will be displayed alternately. once the Controller has been removed from the "SERVICE MODE" these problems will not be displayed again. The failures are removed from memory and will not reappear until the failure has been repeated.

## PRICE LABELS:

Place Price Labels on the drawer, below each selection. make sure the label can be clearly seen from the outside of the machine and that the label price agrees with the price recorded in the controller.

## DIGITAL READOUT:

The Digital Readout is located on the outside of the Outer Door just above the Selection Buttons. The Read-out will display to the customer the total deposits or credits for each vend and when a vend is initiated, the amount to be refunded will be displayed. To verify a selection vend price, push the Selection Button in question, the Price Light will be illuminated and the Vend Price will appear in the display. Specific functions and steps are defined in other sections of this manual.



**FIGURE 11**

# **CONTROLLER & DIGITAL READOUT:**

## **GENERAL FUNCTIONS:**

The Controller allows each selection to be set at different vend prices in increments of 5¢, up to a maximum of \$3.15. All functions, totalizing, vend circuits, etc., are controlled by the Controller. Credits or amounts for each vend are displayed on the Digital Readout. Service messages or service problems are displayed on the readout when the Controller is placed in the Service Mode. Vend price verification is also available by pushing selection buttons while the machine is in the normal Vend Mode.

## **ENTERING THE SERVICE MODE:**

Before any Service function is executed, the Controller must be placed in the Service Mode. This is accomplished by first placing the Power Switch, located above the Control Panel (See Figure 10, Page 5), to the "ON" position. Next depress the "PRICE ARMING/SERVICE SWITCH" located on the Control Panel. The Controller will remain in the Service Mode if any selection button or key is depressed at least once every 25 seconds. If more than 25 seconds elapses without a key or button being depressed, the Controller will return to the Vend Mode.

When entering the Service Mode, the Service message results are displayed to the Service Person. The results are presented on the Digital Display and should be noted by the Service Person **immediately** before any service procedure is initiated. Once a service procedure is initiated, all Service messages are removed from memory and will not reappear again until the failures have been repeated.

The faulty or problem selection number will be displayed, if more than one faulty selection is evident, the display will alternate between these selections. If the letter 'C' is displayed, this indicates a possible changer problem, or the machine has not been vended during a 24 hour period. The changer fault will be cleared when the next vend is made.

Once a fault or problem has been determined, it will be placed in the memory of the Controller. When that Selection Button is pushed, the "MAKE ALTERNATE SELECTION" light will be displayed. All credits or deposits are retained and will be returned to the customer when the COIN RETURN lever is operated. This selection must be repaired or the Controller must be cleared before the Selection can be vended again. During servicing, vend the problem selection, if the "MAKE ALTERNATE SELECTION" light appears, the problem has not been corrected.

A Motor is determined to be defective if it takes more than ½ second for the motor to leave the home (start position), or more than 8 seconds for the motor to return to the home position or complete its vend cycle.

## **VEND PRICE VERIFICATION:**

Vend prices can be verified while the machine is in the normal Vend Mode. This is accomplished by depressing a Selection Button. The "PRICE" light on the display will illuminate and the Vend Price will appear in the display. If the price displayed does not agree with the item being selected, refer to PRICE SETTING INSTRUCTIONS section of the Service Manual. During the Vend Price Verification, no product will be vended if there is insufficient credit in the display. If the price displayed equals ".00", then most likely this selection has been determined inoperative and that selection will be displayed when the Controller is placed in the Diagnostic or Service Mode. Refer to this section in the Service Manual for a more thorough explanation.

## **NORMAL VEND OPERATION:**

The value of all monies deposited will be displayed in the digital readout. When proper credit is established and a Selection Button is depressed, the vend is initiated. The amount deposited will disappear from the display and the display will indicate the amount of money that is to be refunded. The product will be dispensed and the change will be returned on any over deposit after the vend has been completed. If a vend is attempted without sufficient credit, the "PRICE" light and Vend Price will be displayed on the digital readout, no product will be dispensed. If a vend is attempted on a selection that has been determined defective, the "MAKE ALTERNATE SELECTION" light will appear.



# TROUBLE SHOOTING:

## I. MOTOR AND MOTOR CIRCUIT

1. The motor will be determined defective if it takes more than ½ second for the motor to leave the home (start) position.
  - a.) The machine will continue to operate if the Motor fails in a position where the Carrier Switch is in the N.C., or home position.
2. The Motor will be determined defective if it takes more than 8 seconds for the motor to return to the home position or complete it's vend cycle.
  - a.) If the Motor fails in a position where the Carrier Switch is in the N.O. position, the machine will not operate. Money can still be deposited, however when a Selection Button is depressed, the "MAKE ALTERNATE SELECTION" light will appear. money will be refunded when the COIN RETURN lever is operated.
3. Terminal off Motor coils will be detected as a faulty motor.
  - a.) Machine will continue to function on all other selections.
4. Burned out Motor or open coil will be detected.
  - a.) Machine will continue to function on all other selections.
5. Jammed Motor will be detected.
  - a.) The machine will continue to operate if the motor is jammed in the home position. (Carrier Switch in N.C. position)

## II. MOTOR CARRIER SWITCH:

1. Broken wire to Common or terminal off Common of Carrier Switch. This is the Orange & Orange/Black circuit thru the Motor Switches.
2. Broken wire to N.C. or terminal off N.O. of Carrier Switch. This is the wire from the Carrier Switch to the Motor.
  - a.) This failure will make the machine inoperative.

**NOTE:** The "MAKE ALTERNATE SELECTION" light will appear, when any selection that has been determined to be inoperative, is operated. All credits will be cleared and money will be returned when the COIN RETURN lever is operated.

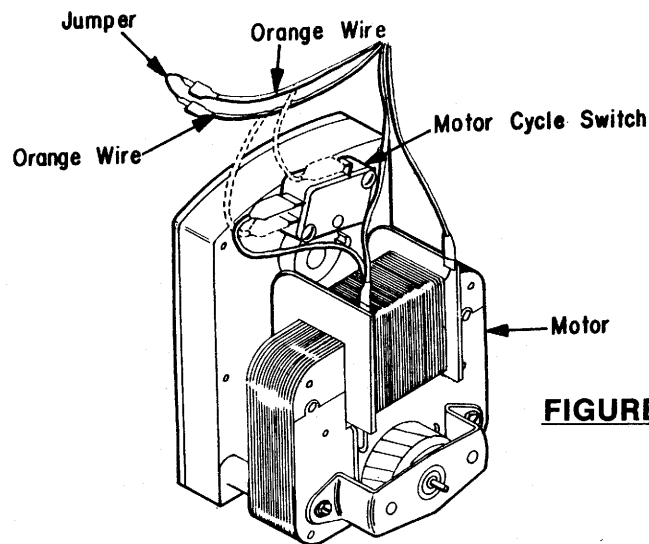
4. Check all Tray Plugs and Receptacles for proper connection.
  - a.) Turn each Motor clockwise by hand, starting with #1. They should run by themselves after a slight turn.
  - b.) When you find the first Motor that does not run, you have found the break in the series circuit. It is between the last Motor that ran and the first Motor that did not.
  - c.) Also check the Plugs on the Trays of both motors if the last one to run was the last motor in a tray and the first Motor that did not run is the first Motor on the next Tray.
  - d.) if none of the motors run, check the Orange wire between No. 1 Motor and the Control Panel.

## III. VENDOR REFUSES ALL COINS:

1. Power Switch out of adjustment. Switch is not being activated when Outer Door is closed. See Power Switch section, page 6 for proper adjustment and function.
2. Product Light out.
  - a.) Check power cord to see if it is plugged in.
  - b.) Check fuse or circuit breaker in building for power.
  - c.) Check Black or White wires from the line cord to the transformer.
3. Light is on, but C.R.E.M. coils are not pulled in.
  - a.) Check circuit breaker on Control Panel.
  - b.) Check for power to Changer. Operate Inventory Switches; Payout Motor on changer should run.
4. Light is on and the C.R.E.M.s are pulled in.
  - A. Check Rejector.
    - a.) Check Coin Paths for foreign materials. Coin Acceptor paths must be clean.
    - b.) Check Rejector on a level surface and drop coins to find problem.
  - B. Check to see that the blocking fingers do not protrude into Coin Paths.
  - C. Check to see that Vendor is level.

## **VENDOR REFUSES ALL COINS: (Continued)**

5. Coin Mechanism accepts coins, but "USE EXACT CHANGE" Light appears.
  - a.) Check to see if Payout Tubes have enough Change:
    - Requires a minimum of 6 Nickels to actuate switch.
    - Requires a minimum of 13 Dimes to actuate switch.
  - b.) Check to see if Change Empty Switches in Changer are activated.
- IV. Vendor vends properly, but pays out wrong or no change.
  1. Vend prices set wrong. (Verify vend prices)
  2. Loose connections in Harnessing. (Check all connections)
  3. Change tubes empty of coins or Empty Switch not sensing empty condition due to a failure of the Switch.
  4. Defective Coin Changer. (Verify vend prices and try other selections before replacing Changer)
  5. Defective Control Board. (Verify vend prices and try different vend prices and selections before replacing Controller)
- V. Vendor preselects one product when credit is reached.
  1. Check for stuck Push Buttons.
  2. Check for shorted Selector Switch.
- VI. Vendor free vends on one selection.
  1. Credit not cancelled because Motor cycle Switch is not breaking, resetting the Controller.
- VII. Vendor will not allow vend price to be set.
  1. Bad Controller - Replace System.
  2. Defective Selection Switch - Replace or Repair



**FIGURE 13**

### **MOTOR JUMPER**

Any motor may be disconnected or removed from the vendor. By the use of a motor jumper the vendor will continue to work on all selections, except for the selection on which the jumper is used.

To use the motor jumper, disconnect the two orange wires from the motor cycle switch and connect one to each side of the motor jumper. Remove white/orange wire from motor coil and wrap with electrical tape. If removing motor completely, make sure to tape the ends of the remaining wires so they will not short to the cabinet. When reconnecting orange wires to switch be sure to put them in the proper places as shown on motor decal.

A Tray Jumper Plug may be used when removing an entire tray. Plug the jumper plug into the end of the cable, coming from the side panel. This will allow the vendor to remain in operation.

## **CARE AND CLEANING:**

Disconnect vendor from power source.

Cabinet Exterior: Wash with warm water and soap.  
Occasionally wax with a good auto wax.

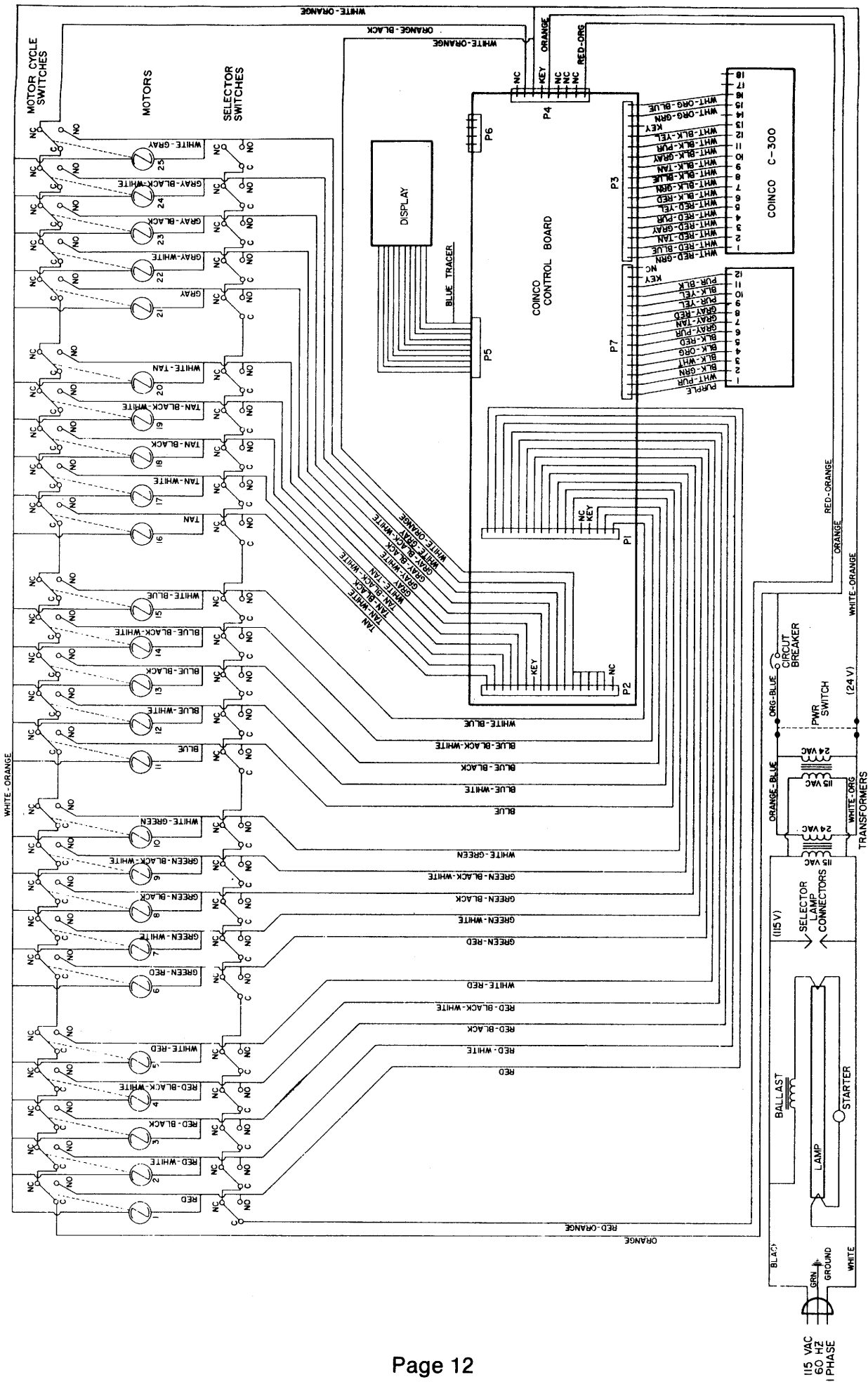
Cabinet Interior: Clear out any foreign particles from delivery box on cabinet. If needed, use a damp sponge and wipe dry.

Windows: Use any type of plastic window cleaner.

---

## **ACCEPTOR:**

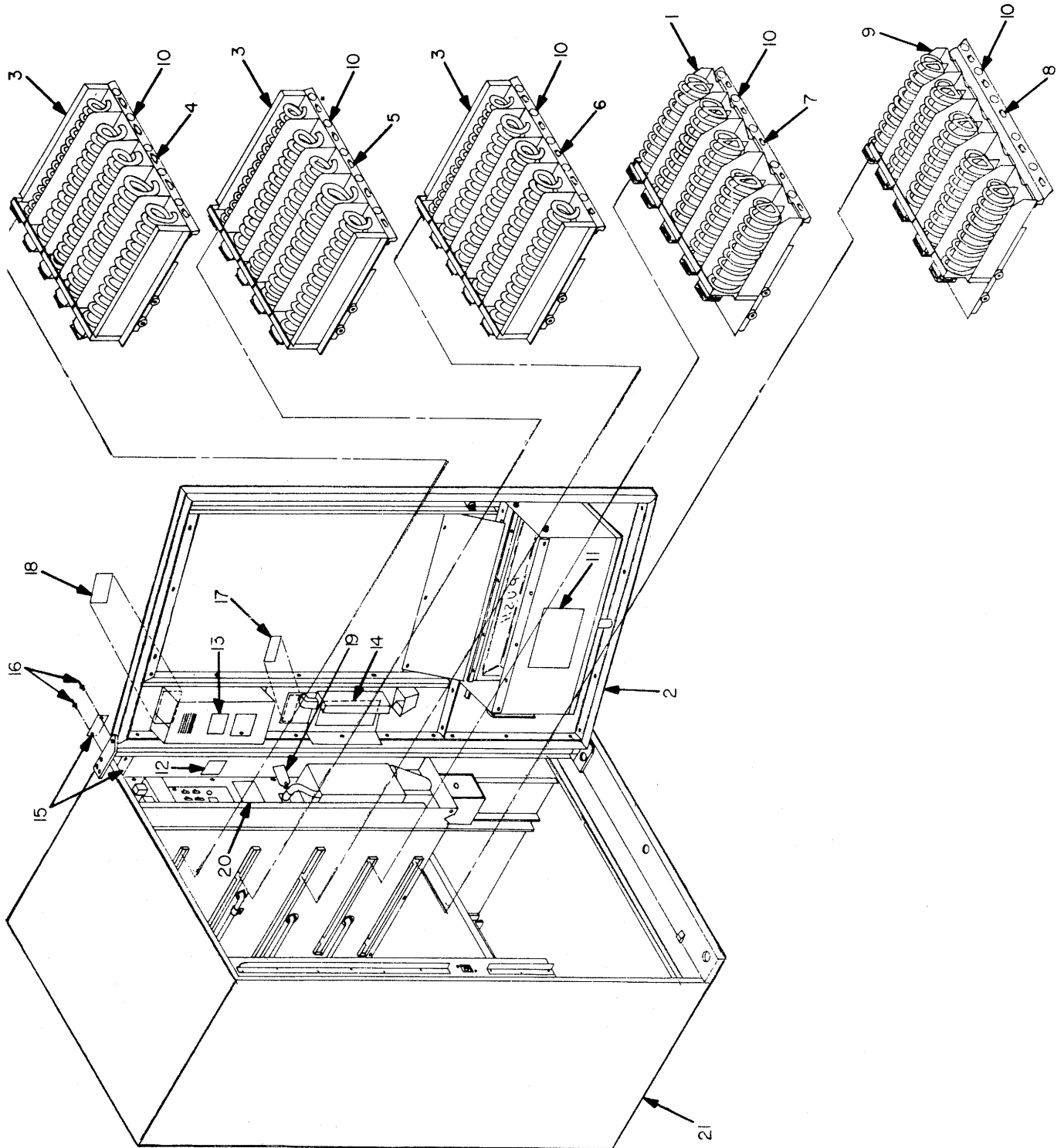
1. Remove acceptor from coin mechanism.
2. Soak acceptor in warm water and a mild liquid household detergent for approximately ten (10) minutes.
3. Use a stiff paint brush or toothbrush to clean foreign matter from the acceptor.
4. Rinse in clean warm water.
5. Dry thoroughly by shaking or by applying filtered compressed air.

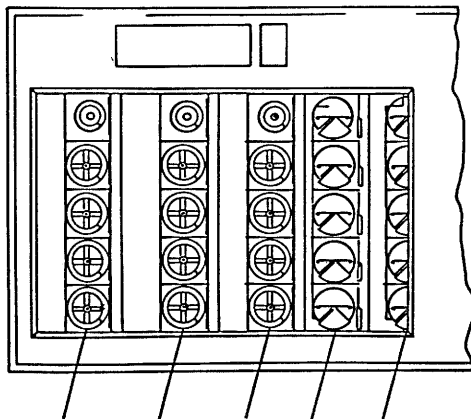


WIRING DIAGRAM  
 COINCO ELECTRONIC CONTROL  
 25 COIL. DRWG. NO. 20822



# UNIT FINAL ASSEMBLY

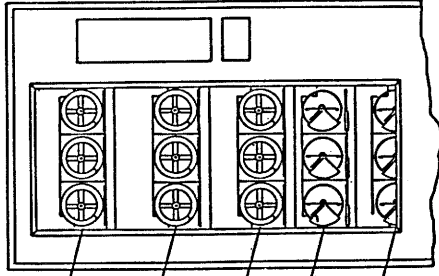




- #1 101145 Page 26
- #2 101145 Page 26
- #3 101145 Page 26
- #4 101143 Page 28
- #5 101144 Page 30

LANCE 25 SELECTION  
DRAWER CONFIGURATION

Item	Part No.	No. Req'd 25 15	Description
1	101143	1	Wire Helix Tray Final Ass'y No. 4 Page 28
*2	101681	1	No. 4 See Page 27
*	102771	1	Complete Door Ass'y
3	102783	1	Complete Door Ass'y
3	101145	3	Flat Wire Helix Tray Ass'y Page 26
4	101682	1	No. 1, 2 and 3 See Page 25
4	20493	1	Item Selection Decal (1-5)
5	20680-000	1	Item Selection Decal (1-3)
5	20494	1	Item Selection Decal (6-10)
6	20680-001	1	Item Selection Decal (4-6)
6	20495	1	Item Selection Decal (11-15)
7	20680-002	1	Item Selection Decal (7-9)
7	20496	1	Item Selection Decal (16-20)
8	20680-003	1	Item Selection Decal (10-12)
8	20497	1	Item Selection Decal (21-25)
	20680-004	1	Item Selection Decal (13-15)



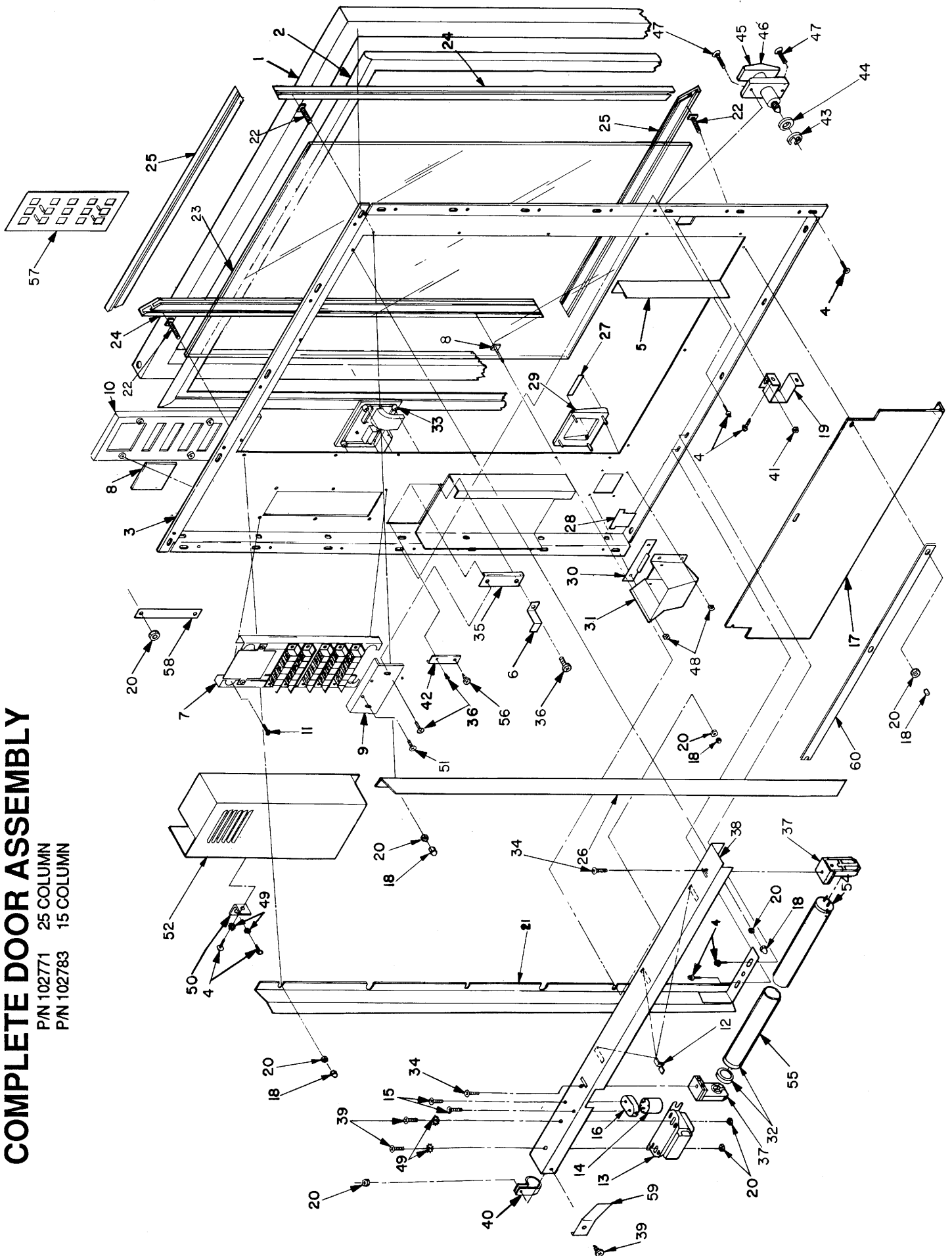
- #1 101682 Page 25
- #2 101682 Page 25
- #3 101682 Page 25
- #4 101681 Page 27
- #5 101919 Page 29

LANCE 15 SELECT  
DRAWER CONFIGURATION

Item	Part No.	No. Req'd 25 15	Description
9	101144	1	Wire Helix Tray No. 5 Page 30
10	101919	1	No 5 See Page 29
	20708		Price Decal (35¢)
	20689		Price Decal (30¢)
*11	20822	1	Wire Diagram
*	20823	1	Wire Diagram
12	20425	1	Patent Decal
13	20819	1	Price Setting Inst.
15	27380	2	Serial Plate
16	27391	2	Serial Plate
17	50667	2	Rivets
17	20593	1	Coin Insert Decal
	20706	1	Coin Insert Decal (Brown)
*18	20818-000	1	Operating Instructions
19	20818-001	1	Operating Instructions
	20480	1	24 Volt Tag
*21	102775	1	Complete Cabinet Ass'y
*	102307	1	Complete Cabinet Ass'y

# COMPLETE DOOR ASSEMBLY

P/N 102771 25 COLUMN  
P/N 102783 15 COLUMN

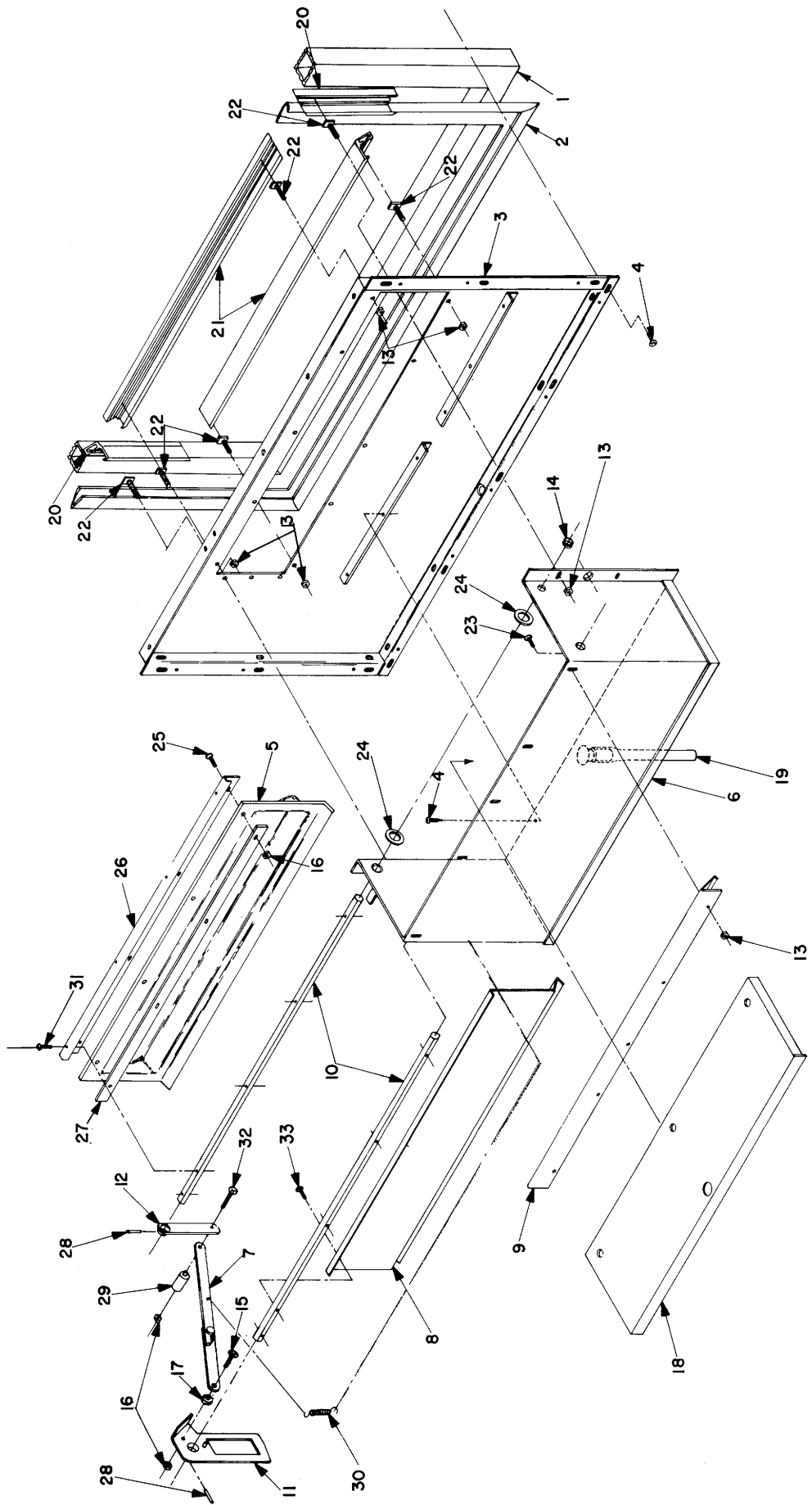




Item	Part No.	No. Req'd	Description
36	50214	3	#8-32 x 5/16 Phil RD. HD. SEMS S.T.S.
37	33548	2	Lamp Holder
38	9917	1	Light Reflector
39	8651	1	Light Reflector
40	50240	16	#8-32 x 3/8 Phil Pan. HD. M.S.
41	60134	1	Clamp, Tubing
42	50546	2	#10-32 Twin Whiz Nut
43	8717	1	Coin Insert Casting Retaining Brk't-Right
44	50555	1	Retaining Ring - 1/2"
	8694-XXX	1	Flat Washer - Door Lock
	8694-000		.035 Thick
	8694-001		.030 Thick
	8694-002		.020 Thick
45	60328-1	1	Lan 1 Key Series W/ Lock Cylinder
	60328-2		Lan 2 Key Series W/ Lock Cylinder
	60328-3		Lan 3 Key Series W/ Lock Cylinder
	60328-4		Lan 4 Key Series W/ Lock Cylinder
	60328-5		Lan 5 Key Series W/ Lock Cylinder
	60328-6		Lan 6 Key Series W/ Lock Cylinder
	60328-7		Lan 7 Key Series W/ Lock Cylinder
	60328-8		Lan 8 Key Series W/ Lock Cylinder
	60328-9		Lan 9 Key Series W/ Lock Cylinder
	60328-10		Lan 10 Key Series W/ Lock Cylinder
46	60321	1	4255 - 19 Flush Handle Lock Without Cylinder or Keys
47	50338	2	#10-32 x 1/2 Flat HD. Phil M.S.
48	50367	4	Tinnerman, Push-On
49	50385	3	#8 External Shakeproof Lock Washer
50	4950	1	Pan Bracket
51	50212	2	#8-32 x 1/4 Phil Pan HD. Type 23 S.T.S.
52	9818-000	1	Light Reflector Housing
*	33974	1	Light Reflector Housing
	33480	1	Harness-Light
	34186	1	Wire, Black-Light
	33480	1	Wire, Black-Light
	34185	1	Wire, White-Light
	34185	1	Wire, White-Light
54	33713-000	1	Safety Shield Kit-Plastic
55	25670	1	Safety Shield Kit-Plastic
	33550	1	Lamp-F16-TB-K26
	33668	1	Lamp-F14-TB
56	50212	1	8-32 x 1/4 Phil PH HD. SMS Type 23
	102787	1	Selector Panel with Label Only
	102788	1	Selector Panel with Label Only
57	102784	1	Filler Plate (15 Col. Only)
58	7967	1	Bar Filler Plate Retainer (15 Col. Only)
59	3365	2	Switch Activator
60	3371	1	Anti-Theft Guard

Item	Part No.	No. Req'd	Description
1	101116-000	1	Door Frame Weld Assy
2	101116-003	1	Door Frame Weld Assy
**3	60359	1	Door Gasket
**	101115	1	Door Gasket
	102316	1	Top Door Panel Assy
		1	Vinyl Top Door Panel Assy
4	50202	As Req'd	#8-18 x 1/2 Phil 1 Hex Washer HD.
5	8693	1	Door Anti Cheat-Right
6	4281	1	Coin Chute Retainer
*7	102772	1	Complete Selector Button Assy
	102785	1	Complete Selector Button Assy
*8	25726	1	Window-Readout
*9	9393	1	Coin Insert Brk't Top
*10	60654-000	1	Selector Panel
11	50242	4	#8-32 x 5/8 Phil Pan HD. Taprite
12	60130	3	Plastic Press Cup - 1/4"
13	33669	1	Ballast SP - 19
14	33609	1	Ballast SP - 2
	33661	1	Starter FS - 25
15	33567	1	Starter FS - 2
16	50018	2	#4-40 x 3/8 Phil Pan HD. M.S.
17	33617	1	Starter Socket
18	9876-000	1	Door Deflector
19	8655-001	1	Door Deflector
20	50548	13	#8 Nylon Screw Cover
21	9823	1	Lock Housing
22	50513	24	#8-32 Twin Whiz Nut
23	101903-000	1	Anti-Theft Guard Weld Assy
24	50724	24	Anti-Theft Guard Weld Assy
25	25546	1	#8-32 x 3/8 T-Bolt
26	23261	1	Display Window
27	23370-002	2	Display Window
28	23370-001	2	Display Trim (Sides)
29	23370-005	2	Display Trim (Top & Bottom)
30	9850-000	1	Display Trim (Top & Bottom)
31	9850-001	1	Anti-Theft Guard - Left
32	33480	1	Anti-Theft Guard - Left
33	33480	1	Anti-Theft Guard - Left
34	33480	1	Decal - Change
35	33480	1	Decal - Change
	33480	1	Coin Return Door
	33480	1	Change Bezel
	33480	1	Anti-Payout Tab
	33480	1	Coin Return Cup
	33480	1	Safety Shield Tube
	33480	1	Safety Shield Tube
	33480	1	End Cap
	33480	2	Complete Coin Insert Casting
	33480	1	Assy (See Page 31)
	33480	2	#6-32 x 1/4 Phil Pan HD. M.S.
	33480	1	Coin Insert Casting Retaining Brk't-Left

# COMPLETE DOOR ASSEMBLY (Cont.)

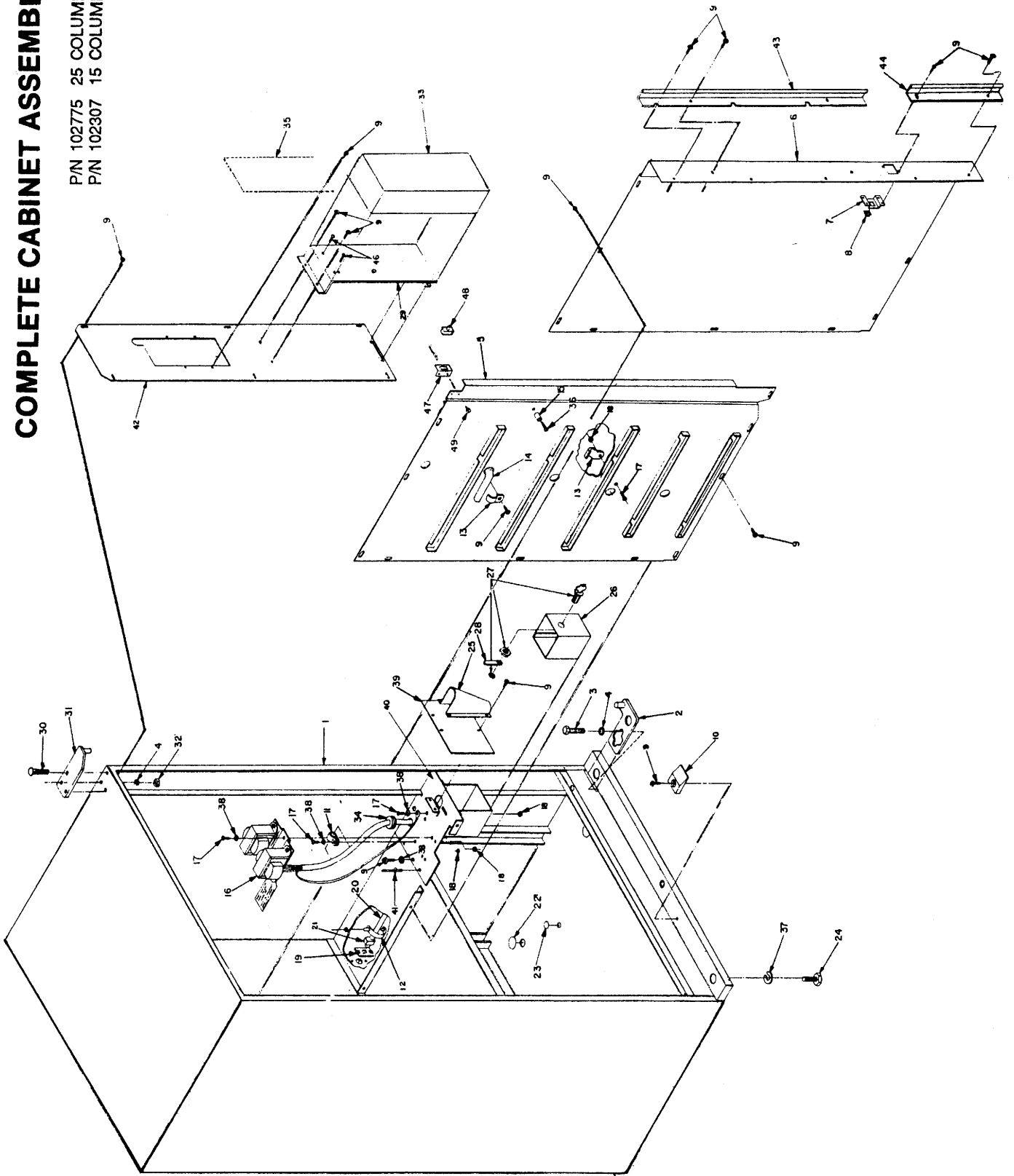


Item	Part No.	No. Req'd 25 15	Description
1	101116	1	Door Frame Weld Assy
2	1011116-003	1	Door Frame Weld Assy
3	60309	1	Door Gasket
3	60359	1	Door Gasket
3	101114	1	Bottom Door Panel Assy
3	102317	1	Vinyl Bottom Door Panel Assy
4	50202	AS Req'd	#8-18 Phil/Hex Washer Hd. Tek
5	25264	1	Delivery Door
5	25611	1	Delivery Door
6	10169	1	Delivery Weld Assy
6	101622	1	Delivery Weld Assy
7	101206	1	Link Arm Assy
8	8664	1	Anti-Cheat
8	8701	1	Anti-Cheat
9	8663	1	Angle Product Deflector
9	8702	1	Angle Product Deflector
10	8666	2	Shaft-Delivery
10	8698	2	Shaft-Delivery
11	101694	1	Anti-Cheat Cam Assy
12	101688	1	Door Link Weld Assy
13	50513	1	#8-32 Twin Whiz Nut
14	25263	4	Tude 7 Snap in Nuliner

Item	Part No.	No. Req'd 25 15	Description
15	50251	1	#8-32 x 3/8 Phil Pan Hd. M.S.
16	50494	1	#8-32 Unitorque Lock Nut
17	30089	1	Bushing
18	9832	1	Delivery Liner
18	4288	1	Delivery Liner
19	25409	1	3/8 I.D. x 1/16 Wall Maulon Tube-8"
20	22357-001	2	Delivery Trim (Sides)
21	22357-002	2	Delivery Trim (Top & Bottom)
21	22357-003	2	Delivery Trim (Top & Bottom)
22	50724	1	#8-32 x 3/8 T-Bolt
23	50240	5	#8-32 x 3/8 Phil Pan HD M.S.
24	50612	4	Flat Washer
25	50247	1	#8-32 x 1/2 Phil Pan HD M.S
26	8662	1	Brk't-Delivery Door Hinge
27	8699	1	Brk't-Delivery Door Hinge
27	8665	1	Brace-Delivery Door
27	8700	1	Brace-Delivery Door
28	50725	2	1/8 x 3/4 Roll Pin
29	30079	1	Shoulder Spacer
30	21066	1	Spring
31	50225	1	8-32 x 3/8 Phil, Pan HD
32	50263	1	8-32 x 7/8 Phil, Pan HD M.S

# COMPLETE CABINET ASSEMBLY

P/N 102775 25 COLUMN  
P/N 102307 15 COLUMN



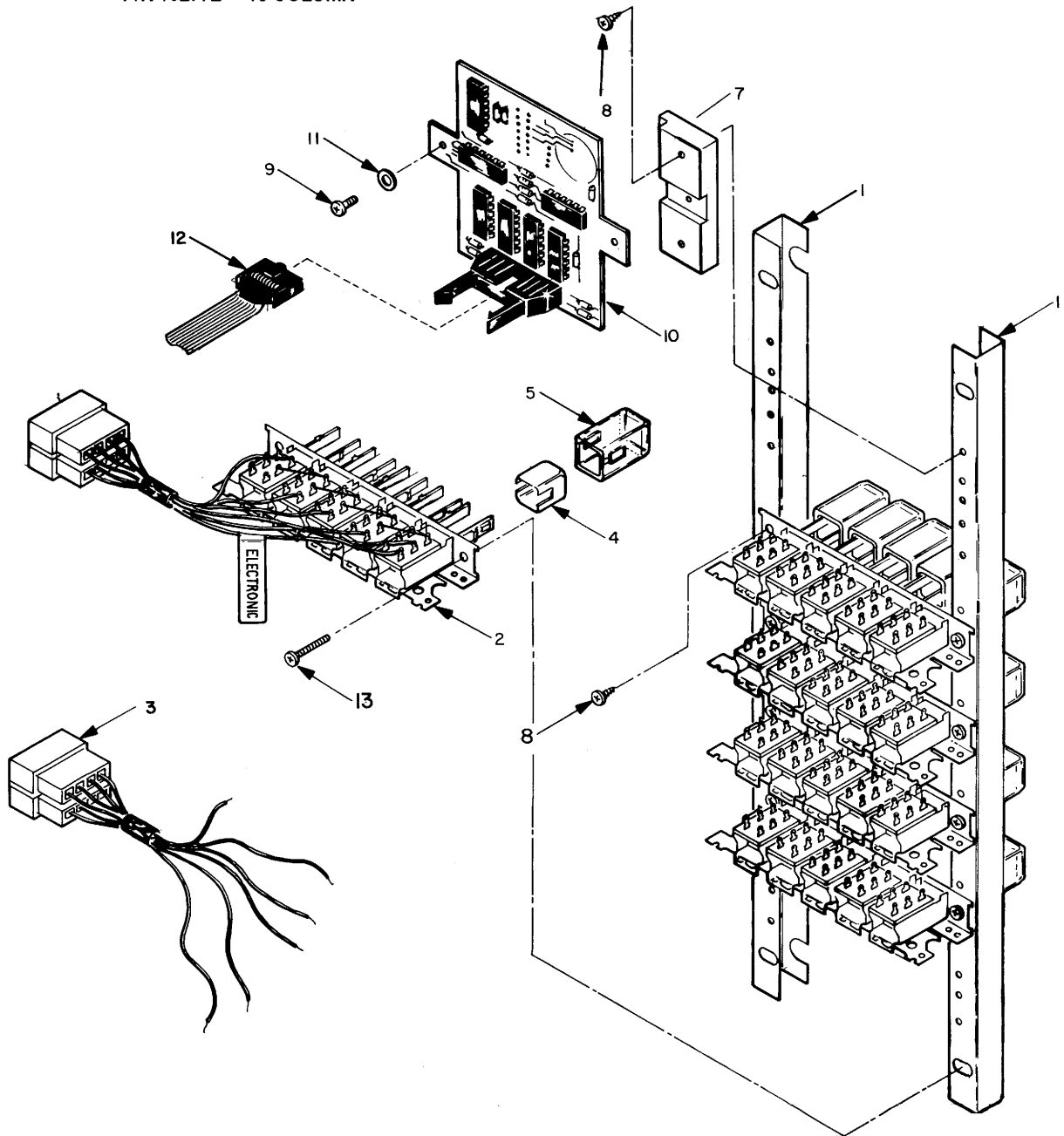
Item	Part No.	No. Req'd	Description
32	50066	3	5/16 Hex Nut
33	60467	1	Coin Mech. 24 Vac C-300 (Coinco)
34	33672	1	Rubber Grommet
*35	102776	1	Controller Panel Final Ass'y
36	50241	6	#8 x 3/4 Phil Pan HD Type "AB" S.M.S.
37	9927	4	Leg Leveler Washers for Skid
38	50585	5	#8 External Shakeproof Lockwasher
39	9998	1	Plate Transformer
40	101547	1	Coin Box Housing Weld Ass'y
41	50685	2	3/16 x 1/4 Pop Rivet
42	3410	1	Front Control Panel
43	8692	1	Anti Theft Rail, Upper
44	8693	1	Anti Theft Rail, Lower
45	33-1309-000	2	#8 x 1/2 Phil Truss HD Type "A" S.M.S.
46	50180	2	#8-18 x 1/2 Phil Pan HD Tek
	101725		Lock and Cam Ass'y - Coin Box (Not Shown)
*47	60419		Caplugs T-4 (Not Shown)
*48	9394	1	Power Switch Bracket
*	34309	1	Power Switch
*	34308	1	Harness - Power Switch (Not Shown)
	34289	1	Harness - Coin Mech.
	33975	1	Harness - 24 Volt Transformer
	33976	1	Harness - 115 Volt Transformer
49	50420	2	#8 x 1/4 Phil Hex HD Type B

Item	Part No.	No. Req'd	Description
1	100794-000	1	Cabinet Weld Ass'y
2	101590	1	Cabinet Weld Ass'y
3	60-0018-000	1	Lower Hinge Stake Ass'y
4	50072	2	5/16-18 x 3/4 Hex HD Bolts
**5	18-6148-000	5	5/16 Lockwasher
	100805	1	Right Panel Screw Ass'y
6	100808	1	Left Panel Screw Ass'y
7	9831	1	Locknut Bracket
8	50760	1	Locknut
9	50202	46	#8-18 x 1/2 Phil/Hex Washer HD Tek
10	25610	1	Door Glide
11	60116	1	Plastic Wire Clamp - 3/8 Dia.
12	60230	1	Tinnerman Plastic Clamp
13	50750	5	1/2 Conduit Wire Clamp
14	33905	1	Main Harness
	33044		Main Harness
15	60174	6	Rolled Split Spacer
16	101657	1	Transformer Ass'y - Complete
17	50240	6	#8-32 x 3/4 Phil Pan HD M.S.
18	50513	6	#8-32 Twin Whiz Nut
19	100422	1	Power Cord Plate Ass'y
20	33631	1	Power Cord - 3 Wire
21	33683	1	Cord Relief Bushing
22	25-0135-002	4	Hole Plug - 1" Dia.
23	25-0135-001	2	Hole Plug - 1/2" Dia.
24	60310	4	Leg Leveler 1/2-13 x 1 13/32
25	9969	1	Coin Chute
26	101137	1	Coin Box Weld Ass'y
27	60318	1	Lock
28	60350	1	Lock Cam
29	101266	1	Coin Mech. Brk't Ass'y
30	50099	3	5/16 x 3/4 Carriage Bolt
31	101127	1	Upper Hinge Stake Ass'y

# PUSH BUTTON FINAL ASSEMBLY

P/N 102772 25 COLUMN

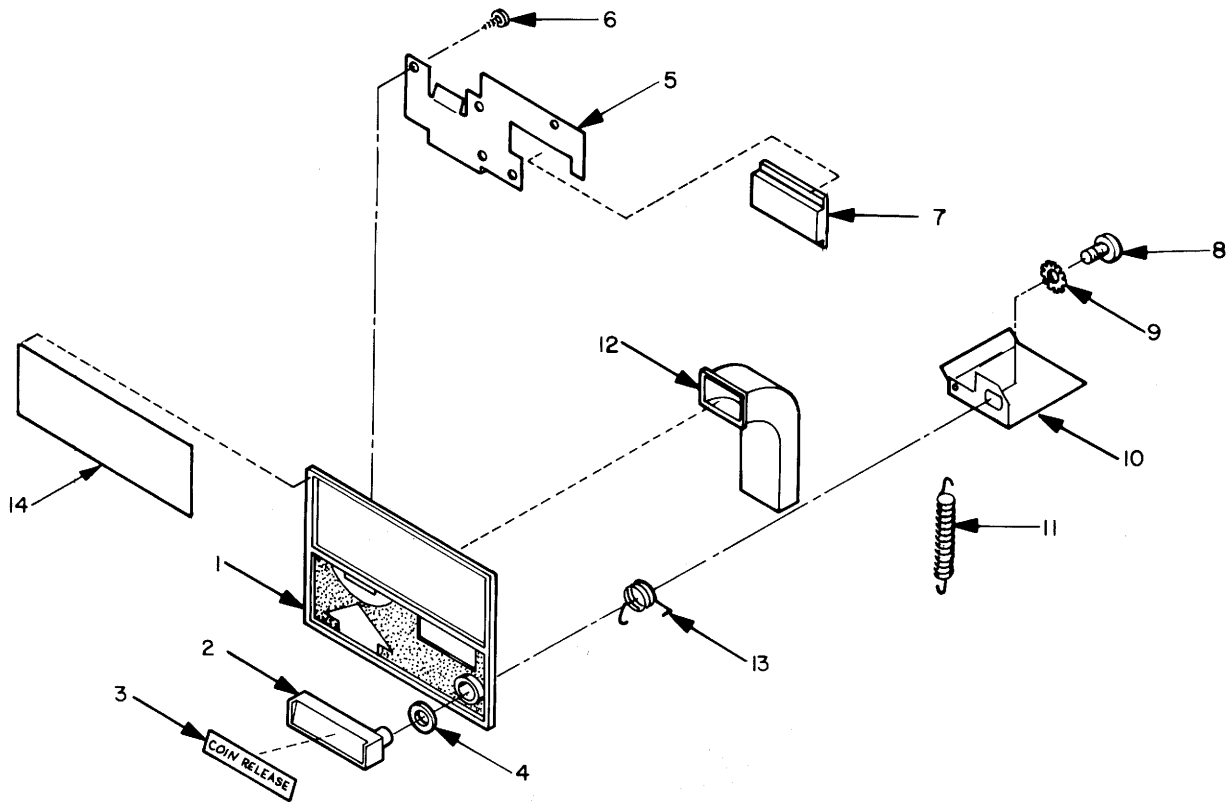
P/N 102772 15 COLUMN



Item	Part No.	No. Req'd		Description
		25	15	
*1	9392	2	2	Push Button Mounting Bracket
2	34233		5	Push Button Harness W/ Switch wo/Nos.
	34214	5		Push Button Harness W/ Switch wo/Nos.
3	34316	5		Push Button Harness
	34317		5	Push Button Harness
4	25554-XXX	25	15	White Push Button W/ No. Hot Stamped XXX is the Hot Stamp No.
5	34093	25	15	Clear Cover - Push Button
7	25729	2	2	L.E.D. Stand Off - Coinco.
8	50120	10	10	#6-32 x 5/16 Phil Pan HD Type "23" Self Tapping
9	50006	2	2	#4-40 x 3/8 Phil. S.M.S.
*10	34294	1	1	Display Board Coinco.
	60657	2	2	Insulation Washer
*12	34290	1	1	Harness - Display
13	50242	4	4	8-32 x 5/8 Phil Pan H.D. Taprite

# COMPLETE COIN INSERT CASTING ASSEMBLY

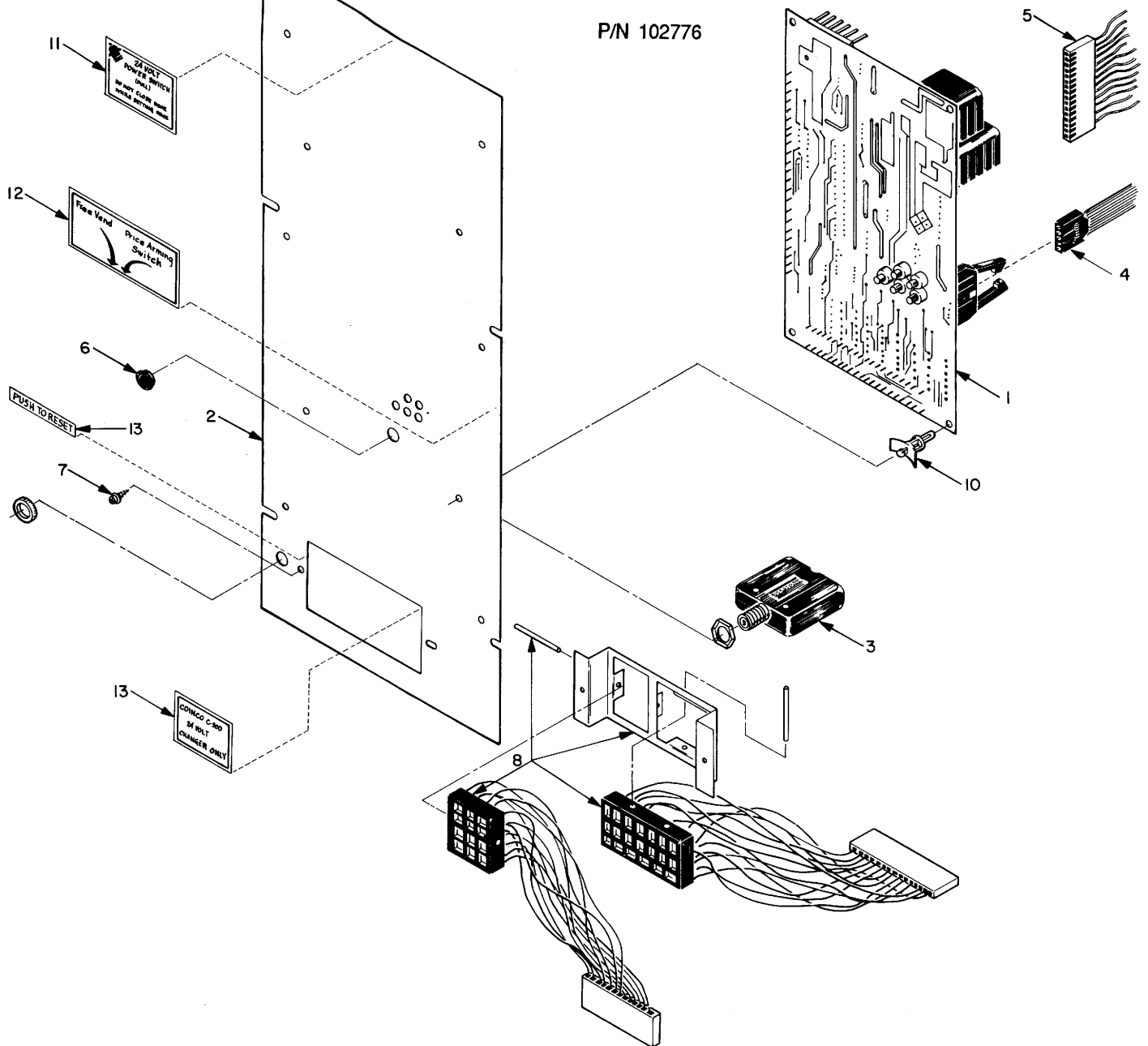
P/N 102773 25 COLUMN  
102786 15 COLUMN



Item	Part Number	No. 15	Req' 25	Description
1	60372	1	1	Coin Insert Casting
2	33-4283-000	1	1	Coin Release Handle
3	33-4370-000	1	1	Decal Coin Release Lever
	33-4370-001	1	1	Decal Coin Release Lever
4	10-8016-000	1	1	Coin Release Washer
5	8715	1	1	Retainer-Coin Chute & Change Light
6	20-0470-008	5	5	#6-32 x 3/16 Phil Pan Hd. S.M.S. Self Tapping
*7	25725	1	1	Filler Plug
8	20-0469-020	1	1	1/4-28 x 1/2 Phil. Truss Hd. M.S.
9	20-0717-008	1	1	Lock Washer-Int. text Tooth
10	33-4983-000	1	1	Coin Release Lever
11	21024	1	1	Spring
12	20-1748-004	1	1	Coin Intake Chute
13	09-1076-100	1	1	Torsion Spring
14	20593		1	Coin Insert Decal
14	20706	1		Coin Insert Decal (Brown)

# COMPLETE CONTROL PANEL ASS'Y

P/N 102776

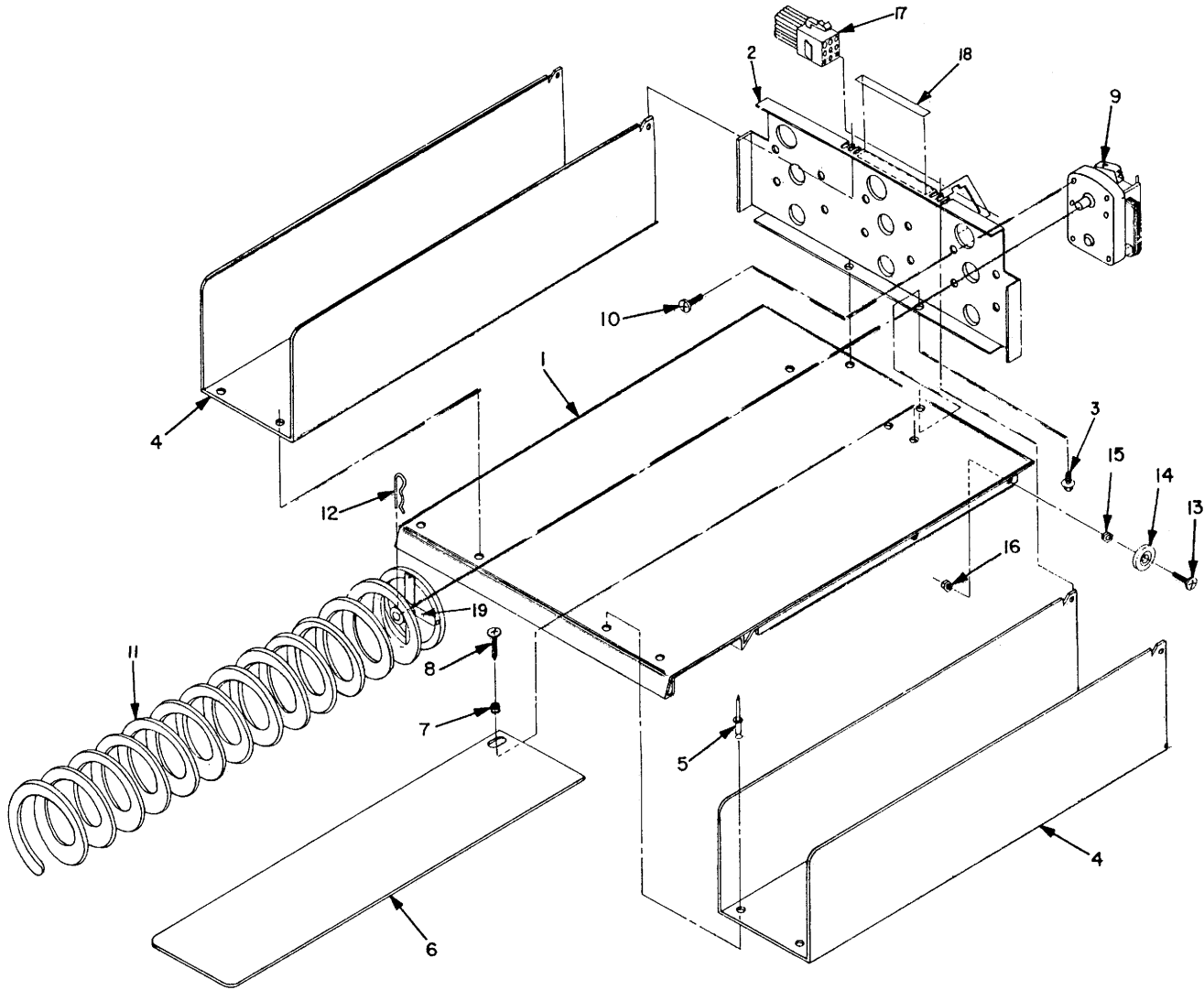


Item	Part Number	No. 15	Req' 25	Description
*1	34293	1	1	Circuit Board - Coinco
*2	9391	1	1	Controller Panel
3	33071	1	1	Circuit Breaker - 3 AMP
4	34290	1	1	Harness - Display
5	34215	1	1	Harness - Control
	34235	1	1	Harness - Control
6	25-0135-001	1	1	Caplug
7	50202	2	2	#8 - 18 Phil Hex Washer HD
8	102769	1	1	Dual Coin Mech Plug Ass'y
*9	20817	1	1	Decal - 24 Volt Changer
*10	25723	4	4	Stand - Off
*11	20821	1	1	Decal - Power Switch
*12	20820	1	1	Decal - Free Vend & Price Arming
13	20487	1	1	Decal - Push to Reset



# FLAT WIRE HELIX TRAY FINAL ASSEMBLY TRAY (1 - 2 & 3) 15 COLUMN ONLY

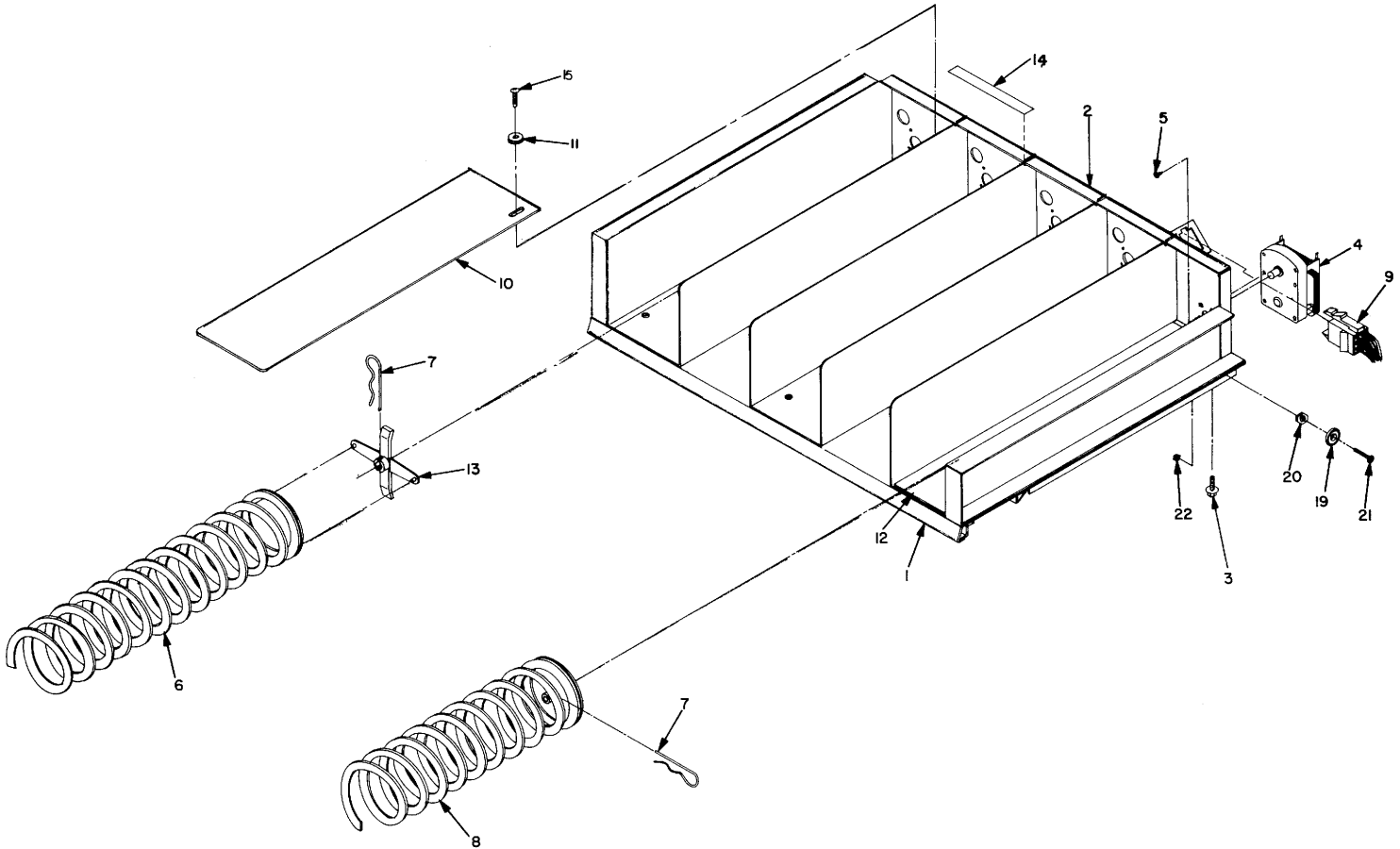
P/N 101682



Item	Part No.	No. Req'd	Description	Item	Part No.	No. Req'd	Description
1	101601	1	Flat Wire Helix Tray Weld Ass'y	14	60172	4	Roller (Nylon)
2	101603	1	Flat Wire Helix Tray Back Weld Ass'y	15	50496	4	1/4-20 Unitorque Lock Nut
3	50437	3	#10x5/16 Ind. Hex Hd. Phil. Type "8" S.M.S.	16	50494	4	#8-32 F/M Unitorque Nut
4	9914	2	Flat Wire Helix Tray Divider	17	33042	1	Tray Harness
5	50665	4	1/8x1/4 Pop Rivet	18	20582	1	Label-Motor
6	4263	3	Flat Wire Adjustable Shelf	19	25596	3	Helix Adaptor
7	33967	3	Grommet		102313	1	Flat Wire Helix Tray Weld & Rivet Ass'y (Not Shown)
8	50180	3	#8-18x1/2 Phil./Hex Washer Hd. Tek		34114		Helix Motor Cycle Switch (Service Part Only) (Not Shown)
9	33943	3	Flat Wire Helix Motor		101935		3 1/4" Product Spacer Kit (Service Part Only) (Not Shown)
10	50240	6	#8-32x3/8 Phil. Pan Hd. M.S.				
11	60240	3	Flat Wire Helix				
12	50773	3	Hitch Pin				
13	50251	4	#8-32x5/8 Phil. Pan Hd. M.S.				

# FLAT WIRE HELIX TRAY FINAL ASSEMBLY TRAYS 1, 2 & 3 25 COLUMN ONLY

P/N 101145

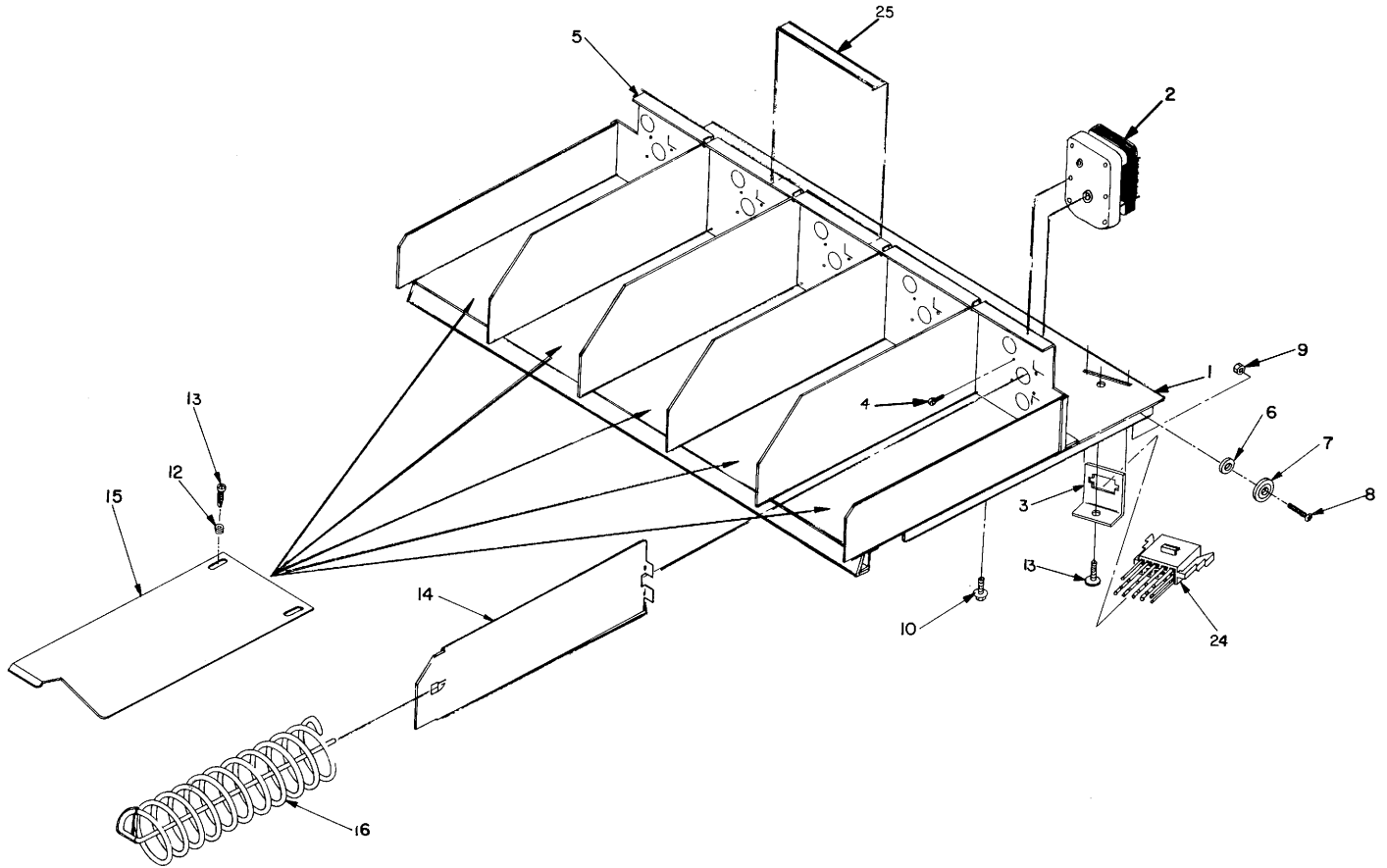


Item	Part No.	No. Req'd	Description	Item	Part No.	No. Req'd	Description
1	100796	1	Flat Wire Helix Tray Weld & Rivet Ass'y	11	33967	5	Rubber Grommet
2	100809	1	Flat Wire Helix Tray Back Weld Ass'y	12	4264	1	Flat Wire Adjustable Shelf (Small)
3	50437	4	#10x5/16 Ind. Phil. Hex Washer Hd. Type "B" S.M.S.	13	25596	4	Helix Adaptor
4	33943	5	Motors 24 Vac	14	20582	1	Motor Decal
5	50240	10	#8-32x3/8 Phil. Pan Hd. M.S.	15	50180	5	#8-18x1/2 Phil. Pan HD. Tek
6	60240	4	Flat Wire Helix-4.250 Dia.	18	101935		3 1/4" Product Spacer Kit (Not shown) (Service Part Only)
7	50773	5	Hitch Pin	19	60172	4	Nylon Roller
8	101194	1	Helix & Hub Ass'y 3.250 Dia.	20	50496	4	1/4-20 Unitorque Nut
9	33903	1	Tray Harness	21	50251	4	#8-32x5/8 Phil. Pan Hd. M.S.
10	4263	4	Flat Wire Adjustable Shelf (Large)	22	50494	4	#8-32 Unitorque Lock Nut
					34114		Helix Motor Cycle Switch (Service Part Only) (Not Shown)



# WIRE HELIX TRAY FINAL ASSEMBLY TRAY (4) 25 COLUMN ONLY

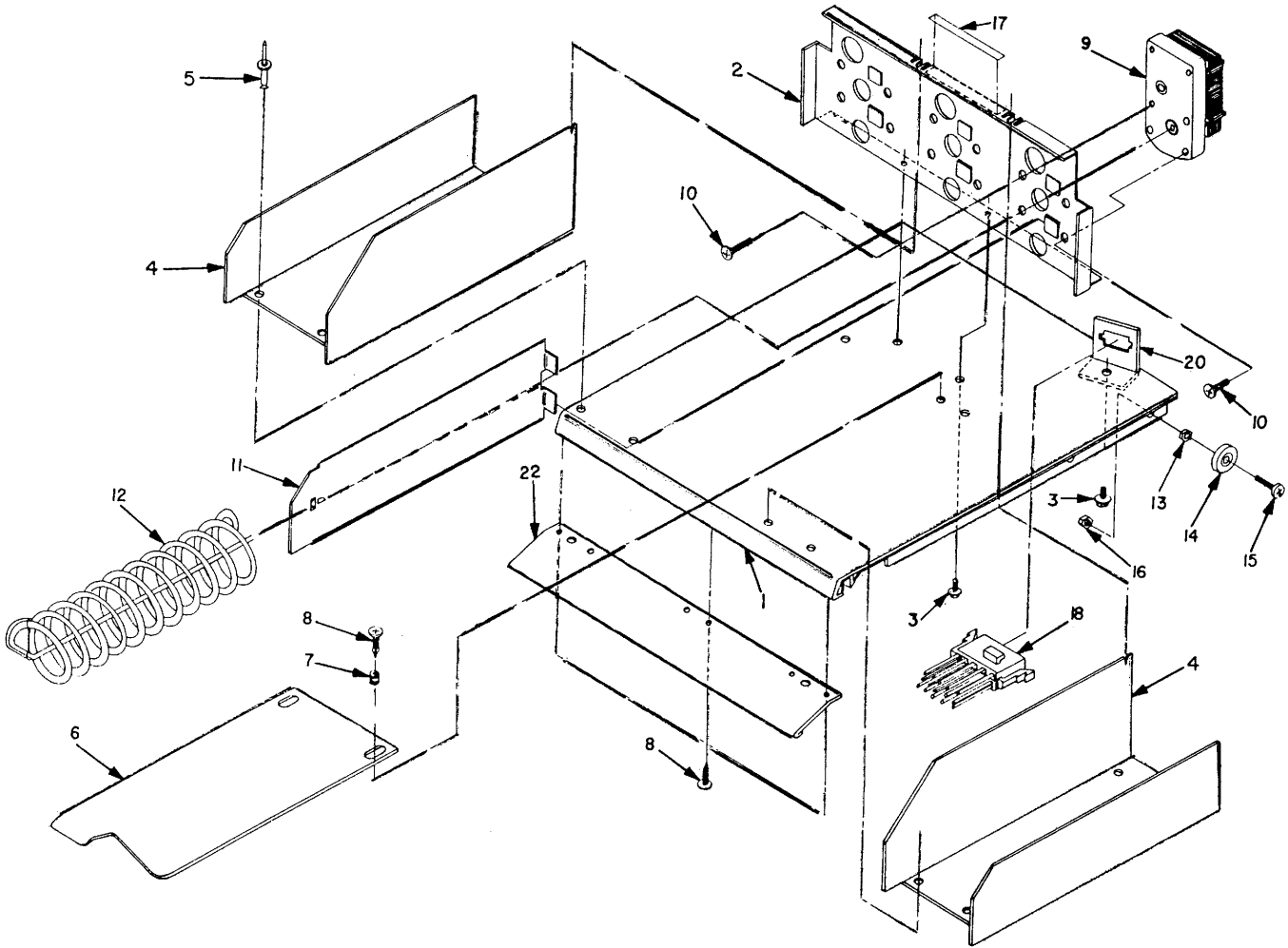
P/N 101143



Item	Part No.	No. Req'd	Description	Item	Part No.	No. Req'd	Description
1	101122	1	Wire Helix Tray Weld & Rivet Ass'y	12	33967	5	Rubber Grommet
2	34090	5	Helix Motor	13	50180	6	#8-18x1/2 Phil. Pan Hd. M.S.
3	9848	1	Plug Brk't	14	8040	5	Helix Divider
4	50240	10	#8-32x3/8 Phil. Pan Hd. M.S.	15	9883	5	Adjustable Shelf
5	8097-001	1	Wire Helix Tray Back	16	60283	5	Wire Helix (with Plastic Web)
6	50496	4	1/4-20 Unitorque Nut		25674		Plastic Web
7	60172	4	Nylon Rollers		60285	5 1/2 ft.	11/2" Wide Clear Tape (Not Shown)
8	50251	4	#8-32x5/8 Phil. Pan Hd. M.S.	24	33903	1	Wire Helix Tray Harness
9	50494	4	#8-32 Unitorque Lock Nut	25	20582	1	Motor Decal
10	50437	3	#10x5/16 Indented Phil. Hex Washer Hd. Type (B) S.M.S.	26	34114		Helix Motor Cycle Switch (Service Part Only) (Not Shown)

# WIRE HELIX TRAY FINAL ASSEMBLY TRAY (5) 15 COLUMN ONLY

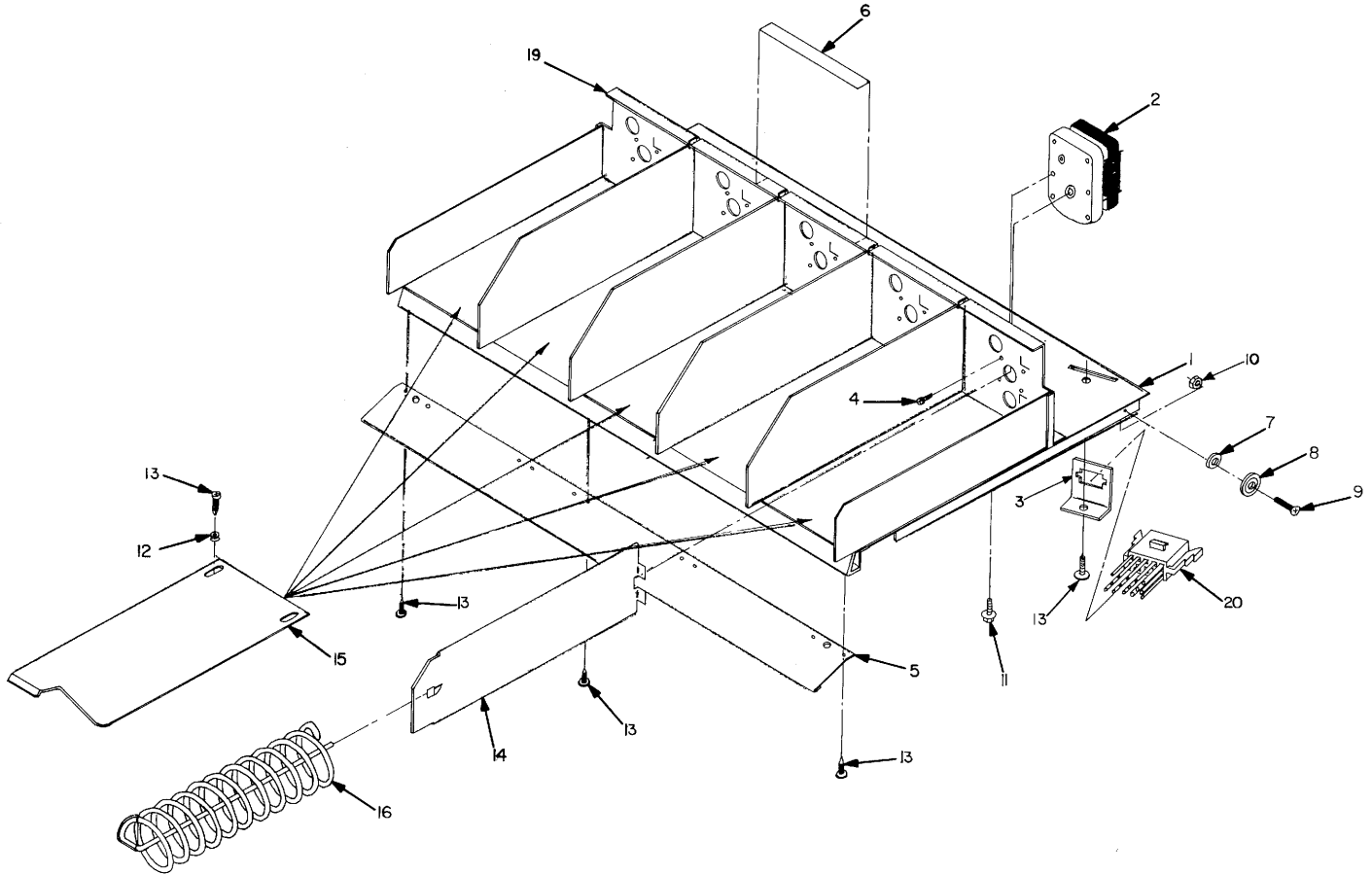
P/N 101919



Item	Part No.	No. Req'd	Description	Item	Part No.	No. Req'd	Description
1	101597	1	Wire Helix Tray Weld Ass'y	14	60172	4	Roller (Nylon)
2	8043	1	Wire Helix tray Back	15	50251	4	#8-32x5/8 Phil. Pan Hd. M.S.
3	50437	3	#10x5/16 Ind. Phil. Hex Washer Hd. Type "B" S.M.S.	16	50494	4	#8-32 F/M Unitorque Nut
4	9909-002	1R/1L	Round-Wire Helix Tray Divider Ends	17	20582	3	Motor Decal
5	50665	4	1/8x1/4 Pop Rivet	18	33042	1	Tray Harness
6	9883	3	Adjustable Shelf		102314	1	Wire Helix Tray Weld & Rivet (Not Shown)
7	33967	3	Rubber Grommet	20	9848-001	1	Plug Bracket
8	50180	3	#8-18x1/2 Phil. Pan Hd. Teks		34114		Helix Motor Cycle Switch (Service Part Only) (Not Shown)
9	34090	3	Helix Motor	22	8633	1	Tray Lip (Used on Bottom Tray Only)
10	50240	6	#8-32x3/8 Phil. Hd. M.S.				
11	8040-001	3	Wire Helix Divider				
12	60283	3	Wire Helix				
	25674	As req'd	Plastic Web				
13	50496	4	1/4-20 Unitorque Lock Nut				

# WIRE HELIX TRAY FINAL ASSEMBLY TRAY (5) 25 COLUMN ONLY

101144



Item	Part No.	No. Req'd	Description	Item	Part No.	No. Req'd	Description
1	101122	1	Wire Helix Tray Weld & Rivet Ass'y	13	50180	9	#8-18x1/2 Phil. Pan Hd. Tek
2	34090	5	Helix Motor	14	8040	5	Wire Helix Divider
3	9848	1	Plug Brk't	15	9883	5	Adjustable Shelf
4	50240	10	#8-32x3/8 Phil. Pan Hd. M.S.	16	60283	5	Wire Helix W/Plastic Web
5	9931	1	Tray Lip		25674	As Req'd	Plastic Web
6	20582	1	Motor Decal	18	60285	51/2 ft.	1 1/2" Wide Clear Tape (Not Shown)
7	50496	4	1/4-20 Unitorque Nut	19	8097-001	1	Wire Helix Tray Back
8	60172	4	Nylon Roller	20	33903	1	Wire Helix Tray Harness(Part of Complete Wire Harness Ass'y No. 101078)
9	50251	4	#8-32x5/8 Phil. Pan Hd. M.S.		101727		Gum & Mint Kit to be used with Open Leaf Motor (Not Shown) (Service Part Only)
10	50494	4	#8-32x Unitorque Lock Nut		102028		Gum & Mint Kit to be used with the Closed Switch Motor P/N 34090 (Not Shown) (Service Part Only)
11	50437	3	#10x5/16 Indented Phil. Hex Washer Hd. Type "B" S.M.S.		34114		Helix Motor Cycle Switch (Service Part Only) (Not Shown)
12	33967	5	Rubber Grommet				

