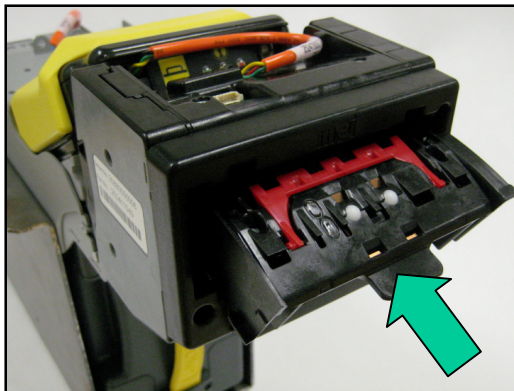
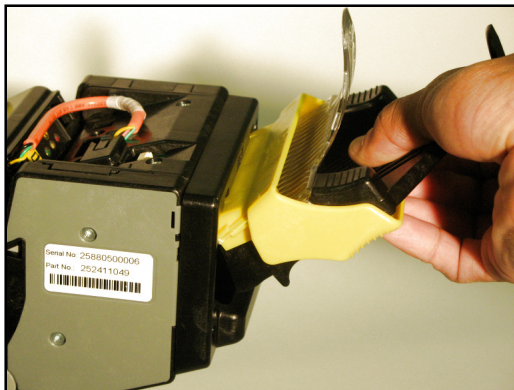


STEP 3: CARTRIDGE AND TRAY REPLACEMENT



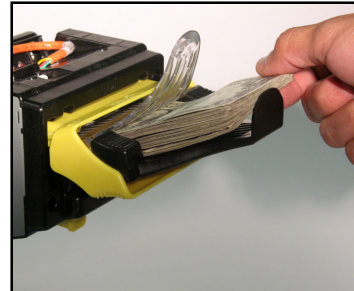
1 ▶ Firmly replace cartridge. The unit may run briefly. The yellow lever must return to the original position.



2 ▶ Replace the note tray.

****If the bill validator is still out of service reset device or cycle power.**

LOAD NOTES



1 ▶ Load notes into note tray.

30 Notes Maximum per bundle



2 ▶ Ensure notes are flat in note tray.

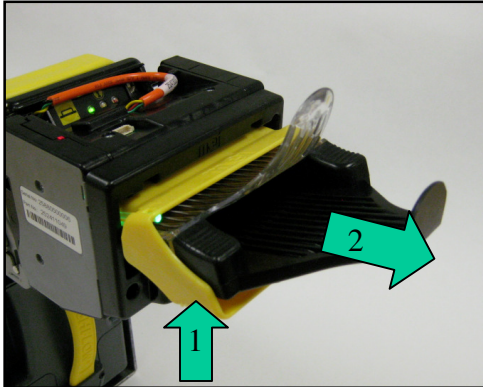


3 ▶ If notes stop feeding, remove all notes, look for and correct any folded notes and place notes neatly back into tray.



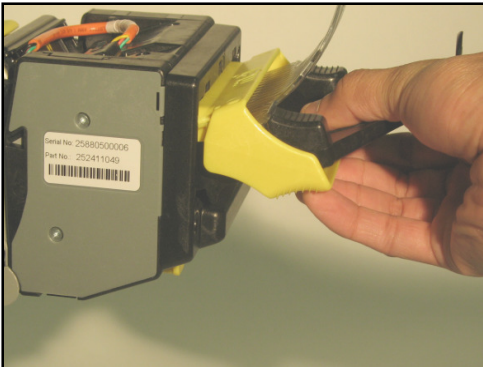
FAULT RECOVERY

STEP 1: NOTE TRAY REMOVAL



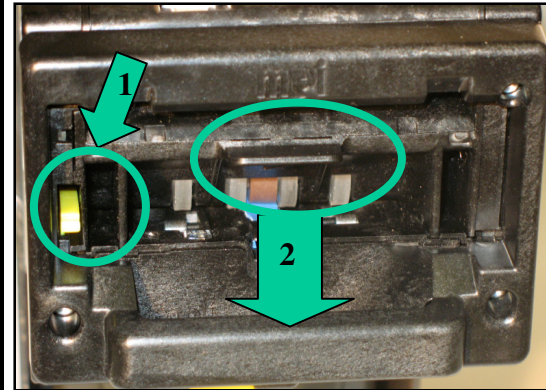
Do not power off device or safe.

- 1 ▶ Squeeze yellow handle.
- 2 ▶ Remove tray.

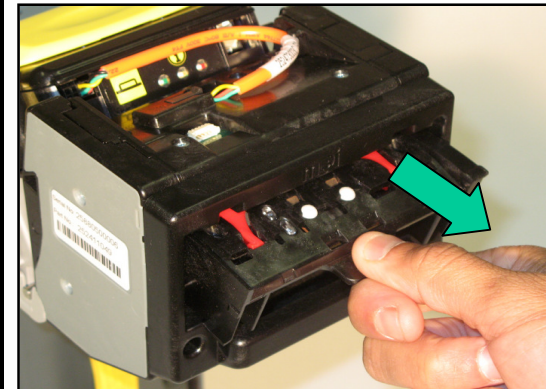


FAULT RECOVERY, cont.

STEP 2: CARTRIDGE REMOVAL



- 1 ▶ Press and hold yellow lever.
- 2 ▶ Pull cartridge tab while lever is pressed.



- 3 ▶ Remove cartridge fully/ by gripping tab. (Unit may try to reject any stuck notes after cartridge removal).



- 4 ▶ Look for stuck notes and remove.