

## GENERAL INFORMATION CONLUX MCM5

This document contains information for installing the MEI Conlux MCM5 coin mechanism.

This product fits into the standard coin changer channel provided by vending machine manufacturers. It mounts on the existing three mounting studs/screws located in the vending machine.

### INTERFACE

MEI Conlux MCM5 coin changer operates in machines that support the MDB interface\*.

The operating voltage of a MEI Conlux coin mechanism is stated on the label of each product. The label is located on the left side of the coin mechanism.

Weight 3.5 lbs.  
Rated Operating Voltage Voltage: 34v d.c. 12W  
0.92A at DC34V peak  
Compliance UL standard, FCC standard

\*Note: MDB (Multi drop bus) interface information can be found on NAMA's website located at [www.vending.org](http://www.vending.org)

### Reading the Conlux Serial # 117400052

First two digits are the year - 2011

Second digit is the month - July

X = October

Y = November Ignore the rest of the numbers

Z = December



This is the QR code for [www.meigroup.com](http://www.meigroup.com).



## INSTALLATION INSTRUCTIONS

### Before you begin...

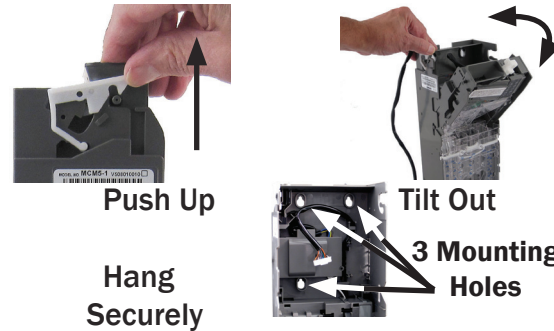
- Remove the coin mechanism from the packaging material. Inspect unit for physical damage.

### You need these tools:

Phillips screw driver  
Wire Tie wraps  
Wire cutters  
Wire Tie wrap adhesive anchors

- Turn **OFF** the power supply to the vending machine.

- Lift up on the **White lever** on the top left side of the coin mechanism and tilt the Discriminator assembly forward.

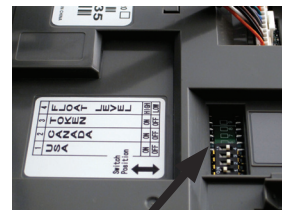


- Once open, the mounting holes are accessible. Hang the coin mechanism on the mounting studs/screws, ensuring that the coin mechanism is mounted vertically with no tilt, on all three studs/screws.

- Tighten the screws (if required),

Check / Set the DIP Switches.  
Close and latch the Discriminator assembly.

Switch Position	1	2	3	4
	U S A	C A N A D A	T O K E N	F L O A T L E V E L
ON	ON	ON	HIGH	
OFF	OFF	OFF	LOW	



## CURRENCY SWITCH

(Located on the back of the Discriminator Unit.)

Switch Number	Function
#1 USA On/Off	On - Accept United States Coins
#2 Canada On/Off	On - Accept Canadian Coins
#3 Token On/Off	On - Accept Tokens
#4 Float High/Low	Set Float either High (\$52.00) or Low (\$34.00)

### ALIGNMENT

Once the coin mechanism is installed, check that there is a small gap (2 mm) between the return lever on the vending machine and the Acceptor Gate lever on the coin mechanism.

Confirm that when you press the coin return lever on the machine door, it fully depresses the acceptor gate lever on the coin mechanism, then lets it return smoothly without holding the gate open.

Check the alignment of the coin input chute and cashbox chute. Insert some coins to check that they enter the coin mechanism properly and exit into the return cup. Ensure that the coin chute does not rest on or open the acceptor gate.

Most machines allow you to adjust the return lever, coin chute, and the return cup to align with the coin mechanism. Align, adjust, and test as necessary to ensure coins are properly routed before continuing with these instructions.

### CONNECTION

If the vending machine has a bill validator, connect the MDB harness coming from the coin mechanism to the bill validator's "Y" connector. If there is no bill validator, connect the coin mechanism harness to the harness coming from the vending machine control board.

Tuck any excess length of harnessing inside the machine. Make sure no harness is pinched or trapped when the coin return lever is pressed or when the vending machine door is closed.

Now you may switch **ON** the power to the vending machine.

## COIN CASSETTE

The coin mechanism can be ordered with one of two cassette configurations for both the USA and Canada. The USA and CANADA use the same cassettes.

- Remove cassette by using your thumb to depress the white latch and tilt the cassette forwards and lift upwards as shown.



A B C D E



Front

The cassette type will be recognized automatically by the coin mechanism.

### LOADING THE COIN CASSETTE

You can load the coin cassette using either of these two techniques:

#### Loading by Removing Cassette

- Remove the cassette. Place it front down on a firm surface. Open the back by pinching the two tabs together and levering it open on the hinge. Fig 1.
- It is recommended that you fill each tube (nickel, dime, quarter, and dollar) if available with at least 15 coins. Each tube will hold 2 rolls of coins.

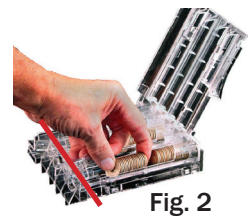
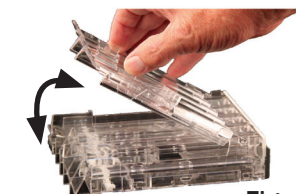
Note: Insure that coins are inserted into the proper tubes.

Do not fill above the MAX FILL line. Fig. 2

### LOADING THE COIN CASSETTE

#### Loading from the Front

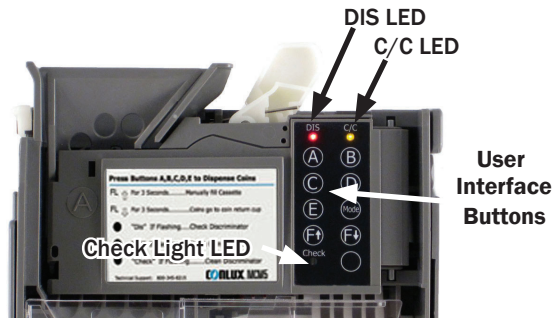
- Press down on the white Cassette Latch in front and tilt the top of the cassette out until you can lift the cassette from the coin changer. Stand the cassette on a firm surface.
- From the front, manually load the coins into tubes A, B, C, D, and E.



## DIAGNOSTIC LED's

Error status will be reported to the main controller, and LEDs will flash as below:

“DIS”: Error of discriminator (Upper part of body)  
 “C/C”: Error of coin changer (Lower part of body)



DIS	C/C	Check Light	Status
●	●	⊗	Ready
★	●	⊗	Check Discriminator for ERROR
●	★	⊗	Check Coin Changer for ERROR
★	★	★	Check and CLEAN the Discriminator
OFF	ON	FLASHING	Press the unmarked button to
⊗	●	★	clear the Check Light

### TOKEN TEACH

The Conlux MCM5 will accept tokens when the Token DIP Switch is placed in the ON position. The Token teach mode is entered by pressing the Mode and B button simultaneously for longer than 2 seconds. When this mode is entered, the C/C LED will flash rapidly. The user should then drop **10 tokens** with at least 1 second intervals between tokens.

The mode will automatically end after the 10<sup>th</sup> token is dropped. If successful, the C/C LED will illuminate continuously.

To obtain tokens contact Vendnet at 800-833-4411.

[www.vendnet.com](http://www.vendnet.com)

## Types of cassettes and the coin configuration

	Type	Feature	Tube A	Tube B	Tube C	Tube D	Tube E
1	US-1	Denomination	25 ¢	5 ¢	25 ¢	10 ¢	25 ¢
		Auto Storing	No	Yes	Yes	Yes	No
		Empty Quantity (Note 1)	6	8	8	10	5
		Full Quantity (Note 2)	71	64	71	97	71
2	US-4	Denomination	1 \$	5 ¢	25 ¢	10 ¢	25 ¢
		Auto Storing	Yes	Yes	Yes	Yes	No
		Empty Quantity (Note 1)	5	8	8	10	5
		Full Quantity (Note 2)	63	64	71	97	71

Note 1: If lower sensor detects coins, then there are coins to at least the empty quantity.

Note 2: If the coins reach the upper sensor, the tube is considered to be full.

### Factory FLOAT/PAR Settings (Chart #1)

#### Float 1 \$34 – Switch Position Low (OFF)

Cassette US-1	
Tube A – 25¢	40 coins = \$10
Tube B – 5¢	40 coins = \$ 2
Tube C – 25¢	40 coins = \$10
Tube D – 10¢	40 coins = \$ 4
Tube E – 25¢	32 coins = \$ 8

Cassette US-4	
Tube A – \$1	10 coins = \$10
Tube B – 5¢	40 coins = \$ 2
Tube C – 25¢	40 coins = \$10
Tube D – 10¢	40 coins = \$ 4
Tube E – 25¢	32 coins = \$ 8

#### Float 2 \$52 – Switch Position High (ON)

Cassette US-1	
Tube A – 25¢	60 coins = \$15
Tube B – 5¢	60 coins = \$ 3
Tube C – 25¢	60 coins = \$15
Tube D – 10¢	60 coins = \$ 6
Tube E – 25¢	52 coins = \$13

Cassette US-4	
Tube A – \$ 1	30 coins = \$30
Tube B – 5¢	40 coins = \$ 2
Tube C – 25¢	40 coins = \$10
Tube D – 10¢	40 coins = \$ 4
Tube E – 25¢	24 coins = \$ 6

### How to Utilize the Float/Par Factory Settings

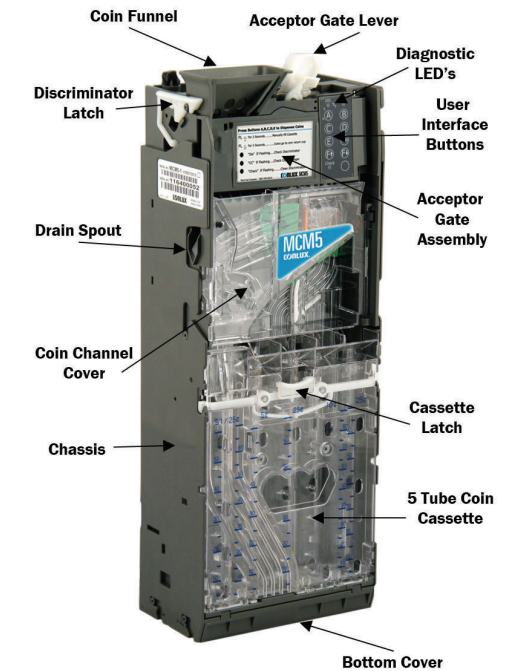
The user must start with an empty cassette.

- The DIP switch should be set to either - Float High \$52.00 (ON) or Float Low \$34.00 (OFF) depending on which value will be utilized.
- Remove the empty cassette from the MCM5. Place it on a hard surface and fill it with the coins indicated on chart #1.
- Press and HOLD the “F↑” button for three (3) seconds. The C/C light will flash rapidly.
- Place the filled cassette back into the MCM5. The C/C light will continue to flash rapidly, then flash 3 times slowly and return to steady ON. You have successfully set the Float/Par.

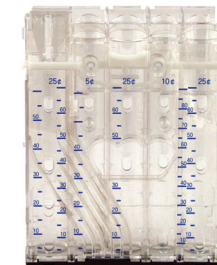
#### AFTER A PERIOD OF OPERATION:

To empty excess coins from the changer and return it to the Float value, press and HOLD the “F↓” button for (3) seconds. The excess coins will be sent to the return cup. If a tube does not have coins up to the Float/Par level, no coins will be dispensed from that tube.

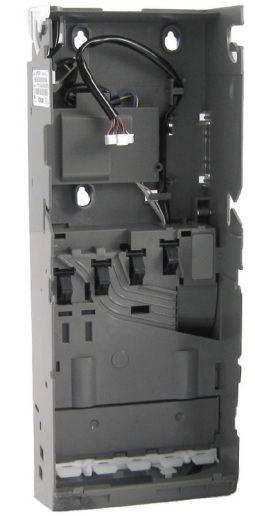
# CONLUX® MCM5 Installation Guide



Discriminator



Coin Cassette



Coin Dispenser

**MEI**  
 1301 Wilson Drive  
 West Chester, PA 19380  
 Technical Support 1(800)345-8172  
<http://www.meigroup.com>