

Hamilton Manufacturing Corp.

1026 Hamilton Dr., Holland, OH 43528 • Phone: 419-867-4858 / 800-837-5561 • Fax: 419-867-4857 • www.hamiltonmfg.com

ACW Enclosure Installation Instructions

TABLE OF CONTENTS

I. INSTALLATION	3
INSTALLATION OF ENCLOSURE	3
DIAGRAM A.....	5
DIAGRAM B.....	6
II. MAINTENANCE	7
CHANGING "PAY HERE" LEXAN®	7
CHANGING THE BOTTOM LEXAN®	8
CHANGING LAMPS	9

I. INSTALLATION

INSTALLATION OF ENCLOSURE

1. Unlock , open door and turn off power to the Autocashier.
2. Turn off main breaker for Autocashier.
3. Remove the four knockouts from the mounting holes in back of the Autocashier cabinet.
4. Loosen the conduit connectors.
5. Loosen, but DO NOT REMOVE THE ANCHOR BOLTS securing the Autocashier to the base.

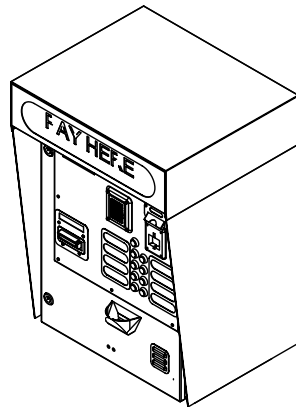
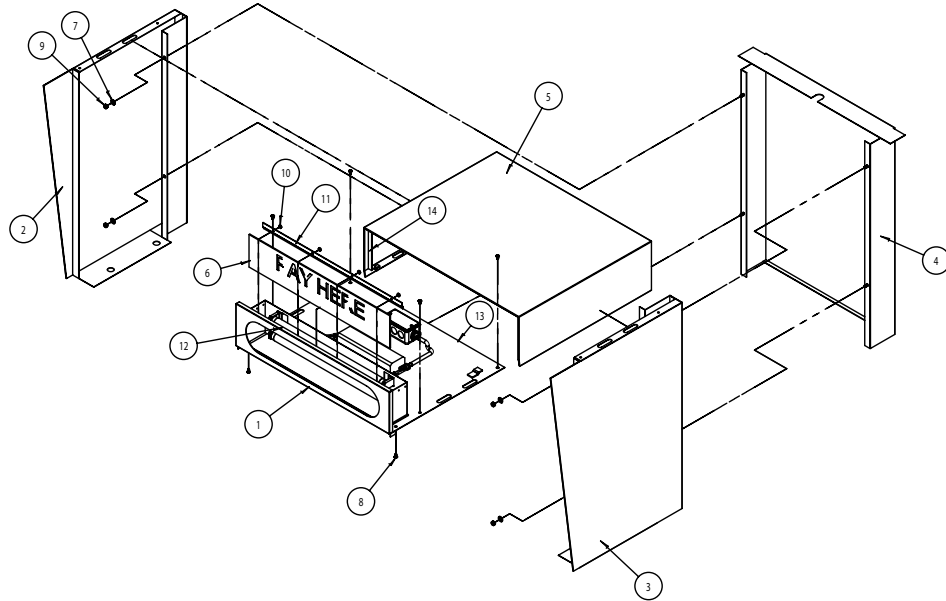
The Autocashier becomes top heavy when the door is open. IF THE ANCHOR BOLTS ARE REMOVED ALL AT ONCE, THE UNIT MAY FALL OVER CAUSING INJURY

6. Remove the two anchor bolts on the Right Side of the bottom of the Autocashier. LEAVE THE ANCHOR BOLTS ON THE LEFT SIDE IN PLACE.
7. Lift up the right side of the Autocashier approximately 1/2". Slide the bottom flange of the Right Side Panel (61-2102) under the Autocashier. Make sure the front flange of the Right Side Panel (61-2102) is in front of the of the flange that is already part of the Autocashier. Maneuver the Right Side Panel (61-2102) and the Autocashier cabinet around until all the holes line up. The two in the bottom and the two in the back.
8. Reinstall the two right anchor bolts, but do not tighten completely.
9. Repeat steps 6, 7 and 8 for the Left Side Panel (61-2101). REMOVE ONLY THE LEFT SIDE ANCHOR BOLTS.
10. Place the Light Bracket (05-0013) on top of the two Side Panels and Autocashier. Making sure that the Side Panels set outside of the small tabs located at the front, lower outside edges of the Light Bracket (05-0013).
11. Install the four 10-24 x 3/8 screws (90-0148) to secure the Light Bracket (05-0013) to the Side Panels. Make sure the edges of the Light Bracket (05-0013) are flush with the outside surfaces of the Side Panels before tightening.
12. Run the electrical conduit up from the conduit hole in the back of the Autocashier to the utility box intended for the fluorescent lamp wiring. Follow all applicable local codes. It is recommended to use a separate breaker for the fluorescent lamp so that it can be turned off during the day.
13. Remove the four 1/4 x 20 nuts (90-0331) and washers (90-0429) from the studs on the Back Panel (61-2103)

14. Align the holes in the Side Panels with the holes in the Autocashier.
15. Align and push the Back Panel (61-2103) studs the holes on the Side Panels and the back of the Autocashier.
16. Reinstall the 1/4 x 20 nuts (90-0031) and washers (90-0429) onto the studs, but do not tighten.
17. Note: When trying to reinstall the 1/4 x 20 nuts (90-0331) and washers (90-0429) to the Back Panel (61-2103) you may be required to remove some other componets in the Autocashier. In an ACW -4 or 5 you will have to remove the hopper. In a Gold Line you will have to remove the hopper and depending on the options you have in your machine you may have to remove the printer, EIC, stacker and Validator.
18. Make sure the Side Panels are pushed toward the center of the cabinet as far as possible and tighten all four anchor bolts.
19. Tighten the Back Panel (61-2103) hardware. 1/4 x 20 nuts (90-0331) and washers (90-0429).
20. The Top Cover (61-2104) is designed to slide forward an slip into the catches on the rear of the Light Bracket (05-0013). Set the Top Cover (61-2104) onto the Light Bracket (05-0013) about two inches rearward of the closed position. Hold the front of the Top Cover (61-2104) up about 1/2" to clear the Display and push forward until it stops. Push down on the Top Cover (61-2104) to set it in place.
21. Install two 10-24 x 3/8 screws (90-0148) from the underside of the Light Bracket (05-0013) and into the Top Cover.
22. Turn power back on at the main breaker and at the Autocashier.

DIAGRAM A

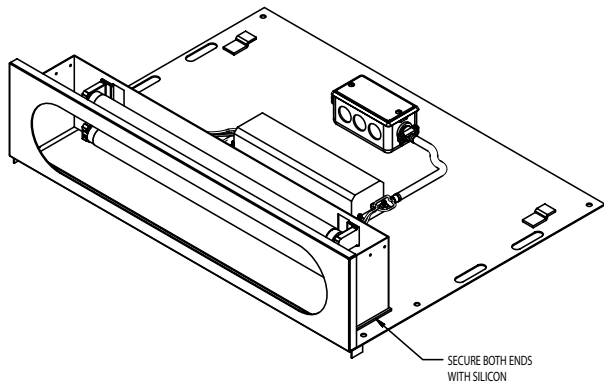
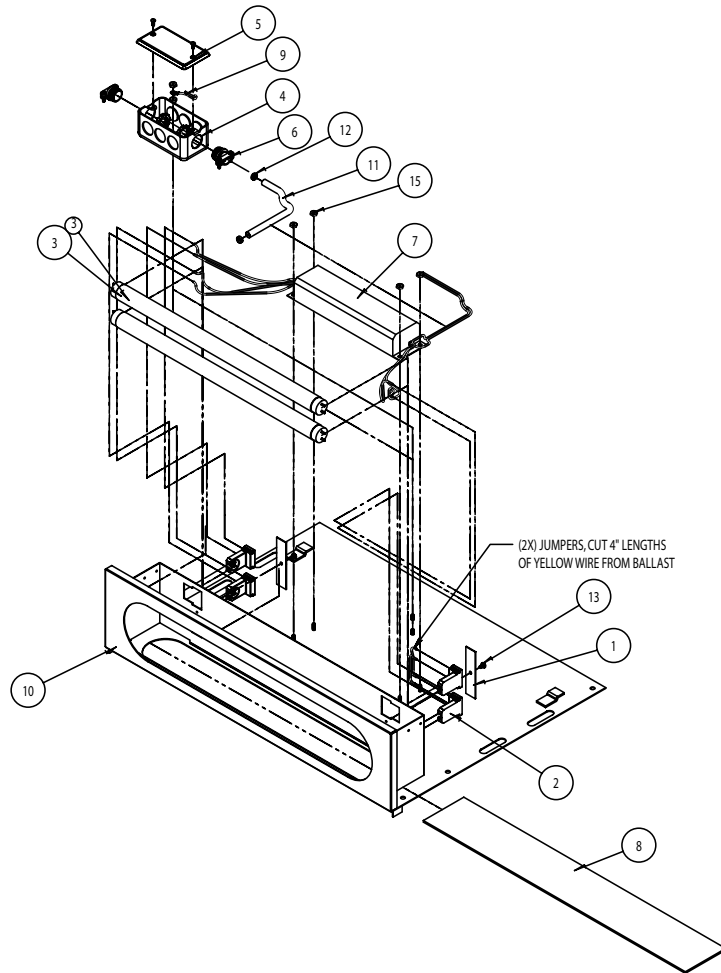
ACW ENCLOSURE



SHOWN MOUNTED ON ACW

-	101-0036	INSTRUCTION SHEET	1
14	47-3012	GASKET, SPONGE RUBBER - 5" STRIPS	2
13	47-0234	GASKET, U-CHANNEL /FOOT	2
12	61-3014	GASKET, EXTERNAL DISPLAY SEAL/FOOT	2
11	61-2105	RAIL, LEXAN CLAMP - EXTERNAL DISPLAY	1
10	90-0316	NUT, HEX #8-32 X 5/16	4
9	90-0331	NUT, 1/4 - 20, PLAIN HEX, CLEAR ZINC PLATE	4
8	90-0148	SCREW, #10-24 X 3/8 LG. PAN HEAD PHILLIPS	6
7	90-0429	WASHER, 1/4 I.D. - PLAIN CLEAR ZINC PLATE	4
6	63-0430	LEXAN, "PAY HERE" - EXTERNAL PAY HERE	1
5	61-2104	WELDMNT, COVER DISPLAY - HOOD	1
4	61-2103	WELDMNT, BACK PANEL - HOOD	1
3	61-2102	WELDMNT, RIGHT SIDE - HOOD	1
2	61-2101	WELDMNT, LEFT SIDE - HOOD	1
1	05-0013	ASSEMBLY, PREP - EXTERNAL DISPLAY	1
ITEM#	PART#	DESCRIPTION	QTY.
61-0590A		ENCLOSURE, "PAY HERE"	

DIAGRAM B



15	90-0326	NUT, #10-24 NYLON INSERT - CLEAR ZINC PLATE	
14	47-0200	WIRE NUT - YELLOW	
13	90-0132	SCREW, #6-32 X 1/4 LG. PAN HEAD PH CLEAR ZINC PLATE	
12	47-0274	ZIP STRAP	
11	47-0228	CONDUIT, WHITE - 8" LENGTH	
10	61-2100	DISPLAY, FRAME	6
9	48-0051C	HARNESS, GROUND	3
8	63-0321	LEXAN, BOTTOM CLEAR - DISPLAY	2
7	47-0290	BALLAST	1
6	47-0029	CLAMP, CONDUIT/BOX	1
5	47-2027	COVER, JUNCTION BOX W/ (2X) #6-32 X 3/8 OVAL HD SCREWS	1
4	47-2026	JUNCTION BOX	1
3	47-0291	TUBE, FLOURESCENT	1
2	47-0292	SOCKET, FLOURESCENT	1
1	61-2106	COVER, LAMP SOCKET	2
ITEM#	PART#	DESCRIPTION	QTY.
05-0013		DISPLAY SUB ASSEMBLY	

II. MAINTENANCE

CHANGING "PAY HERE" LEXAN®

1. Unlock, open door and turn off power to the Autocashier.
2. Turn off main breaker for Autocashier
3. Remove the 2 #10-24x3/8 screws from the underside of the Light Bracket.
4. Slide the Top Piece away from the front of the hood.
5. Remove Top Piece completely.
6. Remove rubber gasket seal from top lip of Light Bracket.
7. Remove both fluorescent lamps, by turning them clockwise till they unlock and slide forward.
(Towards Lexan®)
8. Remove the Lexan® rail clamp by removing the 4 #8-32x5/16 nuts.
9. To remove the "Pay Here" Lexan® you want to push the top portion of the Lexan® away from the front of the Light Bracket and pull up.

Note: The "Pay Here" Lexan® is siliconed on all four sides, so you may have to use a sharp knife to break the seal of the silicone to remove the Lexan®
10. Once the Lexan® is removed you will want to remove all of the extra silicone before attempting to put the new Lexan® in.

Note: It is recommended that if you change the Lexan® that once you have replaced it you should resilicone the Lexan® back in to prevent any damage to your equipment.
11. Once the Lexan® is replaced, reinstall the Lexan® rail clamp using the 4 #8-32x5/16 nuts.
12. Reinstall the fluorescent lamps by sliding them into sockets and turning counter clockwise 1/2 turn till they lock.
13. Reinstall the rubber gasket seal on the top lip of the Light Bracket.
14. Reinstall the Top Piece by sliding it towards the front to the Light Bracket.
15. Reinstall the 2 #10-24x3/8 screws to the underside of the Light Bracket.
16. Restore power to your machine.

Use only LEXAN brand, 1/8 " thick plastic sheeting with the following dimensions:

FRONT: 21-15/16 " x 4-1/4" x 1/8"

CHANGING THE BOTTOM LEXAN®

1. Unlock, open door and turn off power to the Autocashier.
2. Turn off main breaker for Autocashier
3. Remove the 2 #10-24x3/8 screws from the underside of the Light Bracket.
4. Slide the Top Piece away from the front of the hood.
5. Remove Top Piece completely.
6. To remove the Bottom Lexan® piece you want to push the Lexan® to one side. It can be removed from either the right side or left.

Note: The Bottom Lexan® piece is siliconed on both ends, so you may have to use a sharp knife to break the seal of the silicone to remove the Lexan®

6. Once the Lexan® is removed you will want to remove all of the extra silicone before attempting to put the new Lexan® in.

Note: It is recommended that if you change the Lexan® that once you have replaced it you should resilicone the Lexan® back in to prevent any damage to your equipment.

7. Reinstall the Top Piece by sliding it towards the front to the Light Bracket.
8. Reinstall the 2 #10-24x3/8 screws to the underside of the Light Bracket.
9. Restore power to your machine.

Use only LEXAN brand, 1/8 " thick plastic sheeting with the following dimensions:

BOTTOM: 21-15/16" x 3-3/8" x 1/8"

CHANGING LAMPS

1. Unlock, open door and turn off power to the Autocashier.
2. Turn off main breaker for Autocashier
3. Remove the 2 #10-24x3/8 screws from the underside of the Light Bracket.
4. Slide the Top Piece away from the front of the hood.
5. Remove Top Piece completely.
6. To remove twist the fluorescent lamp 1/2 turn and pull forward.
6. Reinstall the fluorescent lamps by sliding them into sockets and turning counter clockwise 1/2 turn till they lock.
7. Reinstall the Top Piece by sliding it towards the front to the Light Bracket.
8. Reinstall the 2 #10-24x3/8 screws to the underside of the Light Bracket.
9. Restore power to your machine.

Replace Fluorescent lamp with F15T8/CW lamps.

LIMITED WARRANTY AGREEMENT OF HAMILTON MANUFACTURING CORP.

Hamilton Manufacturing Corp., an Ohio Corporation, ("Seller") warrants to Purchaser that all new equipment shall be free from defects in material and factory workmanship for a period of one (1) year from the original shipping date. Hamilton Manufacturing Corp. further warrants if any part of said new equipment in Seller's sole opinion, requires replacement or repair due to a defect in material or factory workmanship during said period, Seller will repair or replace said new equipment. Purchaser's remedies and the liabilities and obligations of Seller herein shall be limited to repair or replacement of the equipment as Seller may choose, and Seller's obligation to remedy such defects shall not exceed the Purchaser's original cost for the equipment. Purchaser EXPRESSLY AGREES this is the EXCLUSIVE REMEDY under this warranty. There are no other express or implied warranties which extend beyond the face hereof. All warranty repair service must be performed by either a Factory Trained Service Representative or **HAMILTON MANUFACTURING CORP., 1026 Hamilton Drive, Holland, Ohio 43528 PHONE (419) 867-4858 or (800) 837-5561, FAX (419) 867-4867.**

The limited warranty for new equipment is conditioned upon the following:

1. The subject equipment has not, in the Seller's sole opinion, been subjected to: accident, abuse, misuse, vandalism, civil disobedience, riots, acts of God, natural disaster, acts of war or terrorism.
2. The Seller shall not be liable for any expense incurred by Purchaser incidental to the repair or replacement of equipment and Purchaser shall assume full responsibility for any freight or shipping charges.
3. The coverage of this warranty shall not extend to expendable parts.
4. Purchaser shall have a warranty registration card on file with Seller prior to any claim in order for warranty protection to apply.
5. No warranty coverage is applicable to any equipment used for currency other than that specified at the time of the purchase.
6. Seller expressly disclaims any warranty that counterfeit currency will not activate said equipment.
7. Seller expressly disclaims any warranty for any losses due to bill manipulation or theft or loss of cash under any circumstances.
8. Use of the equipment for anything other than its intended and designed use will void the Limited Warranty Agreement. Use of equipment for anything other than its intended and designed use includes, but is not limited to, downloading software/applications not certified by Seller such as e-mail, spyware, screen savers, viruses, worms, third party software, web search engines, cookies, spam, desktop applications, games, web surfing, etc.

Seller further warrants all repair or service work performed by a factory trained representative or Hamilton Manufacturing Corp. for a period of ninety (90) days from the date the repair or service work was performed. Purchaser's remedies and the liabilities and obligations of Seller herein shall be limited to repair or replacement of equipment as Seller may choose, and Seller's obligation to remedy such defects shall not exceed the Purchaser's depreciated value of the equipment. Purchaser EXPRESSLY AGREES this is an EXCLUSIVE REMEDY under this warranty. There are no other express or implied warranties on repair or service work performed by a factory trained representative or Hamilton Manufacturing Corp. which extend beyond the face hereof.

The limited warranty for repair and service work is conditioned upon the following:

1. The subject equipment has not, in the Seller's sole opinion, been subjected to: accident, abuse, misuse, vandalism, civil disobedience, riots, acts of God, natural disaster, acts of war or terrorism.
2. The Seller shall not be liable for any expense incurred by Purchaser incidental to the repair or replacement of equipment and Purchaser shall assume full responsibility for any freight or shipping charges.
3. The coverage of this warranty shall not extend to expendable parts.
4. Purchaser shall have a warranty registration card on file with Seller prior to any claim in order for warranty protection to apply.
5. No warranty coverage is applicable to any equipment used for currency other than that specified at the time of the purchase.
6. Seller expressly disclaims any warranty that counterfeit currency will not activate said equipment.
7. Seller expressly disclaims any warranty for any losses due to bill manipulation or theft or loss of cash under any circumstances.
8. No person or entity other than a factory trained representative or Hamilton Manufacturing Corp. has performed or attempted to perform the subject repair or service.
9. Using equipment which has been serviced or repaired for anything other than its intended or designed use such as downloading software applications not certified by Seller will void the Limited Warranty Agreement. This includes software/applications such as e-mail, spyware, screen savers, viruses, worms, third party software, web search engines, cookies, spam, desktop applications, games, web surfing, etc.

THIS AGREEMENT IS MADE WITH THE EXPRESS UNDERSTANDING THAT THERE ARE NO IMPLIED WARRANTIES THAT THE EQUIPMENT SHALL BE MERCHANTABLE, OR THAT THE GOODS SHALL BE FIT FOR ANY PARTICULAR PURPOSE. PURCHASER HEREBY ACKNOWLEDGES THAT IT IS NOT RELYING ON THE SELLER'S SKILL OR JUDGMENT TO SELECT OR FURNISH EQUIPMENT SUITABLE FOR ANY PARTICULAR PURPOSE AND THAT THERE ARE NO WARRANTIES WHICH EXTEND BEYOND THAT WHICH IS DESCRIBED HEREIN.

The Purchaser agrees that in no event will the Seller be liable for direct, indirect, or consequential damages or for injury resulting from any defective or non-conforming new, repaired or serviced equipment, or for any loss, damage or expense of any kind, including loss of profits, business interruption, loss of business information or other pecuniary loss arising in connection with this Limited Warranty Agreement, or with the use of, or inability to use the subject equipment regardless of Seller's knowledge of the possibility of the same.

Hamilton Manufacturing Corp.

1026 Hamilton Drive
Holland, OH 43528

Sales Phone: (888) 723-4858 **Sales Fax:** (419) 867-4850

Customer Service Phone: (800) 837-5561 **Customer Service Fax:** (419) 867-4857

Parts Phone: (866) 835-1721 **Parts Fax:** (419) 867-4867

Website: <http://www.hamiltonmfg.com>

Email Addresses:

service@hamiltonmfg.com

sales@hamiltonmfg.com

parts@hamiltonmfg.com